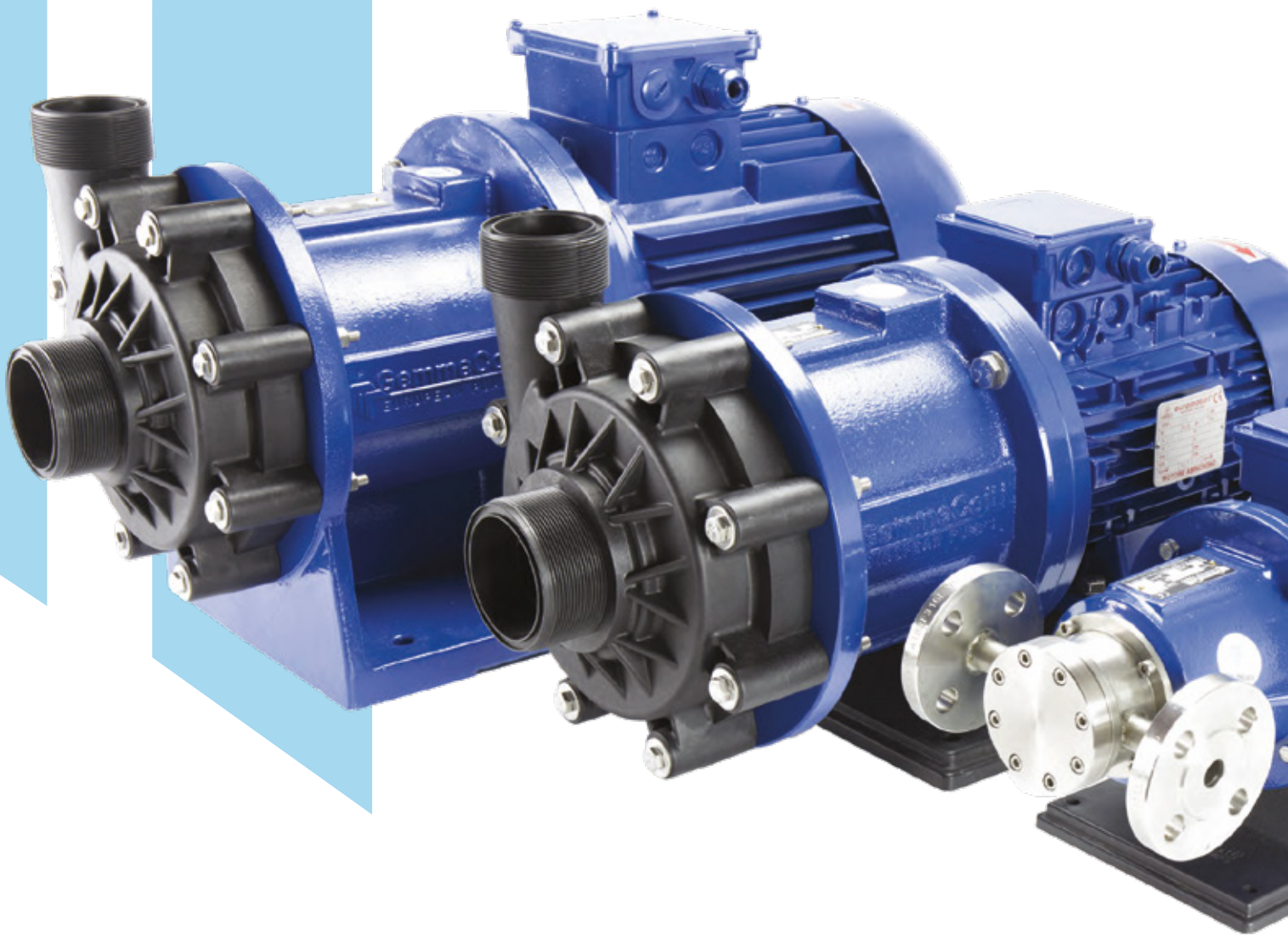


CHEMICAL PUMPS SINCE 1992



ATEX PUMPS PP/PVDF



For applications in potentially explosive atmospheres GemmeCotti offers ATEX certified pumps.

ATEX pumps made of thermoplastic material polypropylene (PP) or PVDF are suitable to be used in potentially explosive atmospheres classified zone 2 II 3G c Tx.

All our ATEX pumps comply with the technical and safety requirements of ATEX Directive 2014/34/EU.

Pump model EM-C PP/PVDF - only for ATEX zone 2
(See pump model HTMPP/ PVDF page 12)



Pump model EM-T PP/PVDF - only for ATEX zone 2
(See pump model HTT page 28)



Pump model EM-P PP/PVDF - only for ATEX zone 2
(See pump model HPP/ HPF page 36)



Pump model EM-T SP - only for ATEX zone 2
(See pump model HTT- SP page 30)

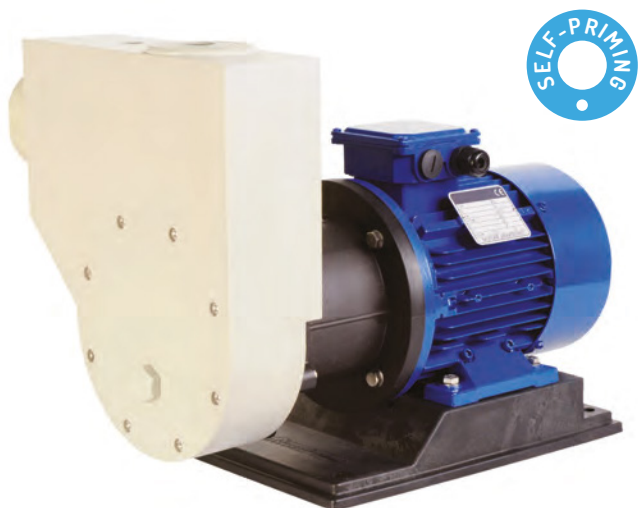


Pump model EM-CO - only for ATEX zone 2
(See pump model HCO page 42)





THERMOPLASTIC MAG-DRIVE REGENERATIVE TURBINE PUMPS, SELF-PRIMING



HTT-SP pumps can prime up to 5 m with water at ambient temperature. The casing is made from a PP solid machined block and the impeller in PVDF for maximum chemical resistance. The casing is machined from a solid block. The impeller in PVDF is self-balanced to eliminate thrust bearing wear and it is separate to minimize the maintenance costs. This kind of pump offers maximum resistance withstanding also external corrosion. It handles up to 20% entrained gas and resists cavitation.

MAIN FEATURES:

- Max flow: 6 m³/h; max head 28 m.
- Max temperature: PP: 70°C - PVDF: 90°C.
- High torque magnetic coupling.
- Chemical resistant PTFE/carbon sleeve bearings.
- Static shaft in high purity ceramic.
- Direct starting motor.

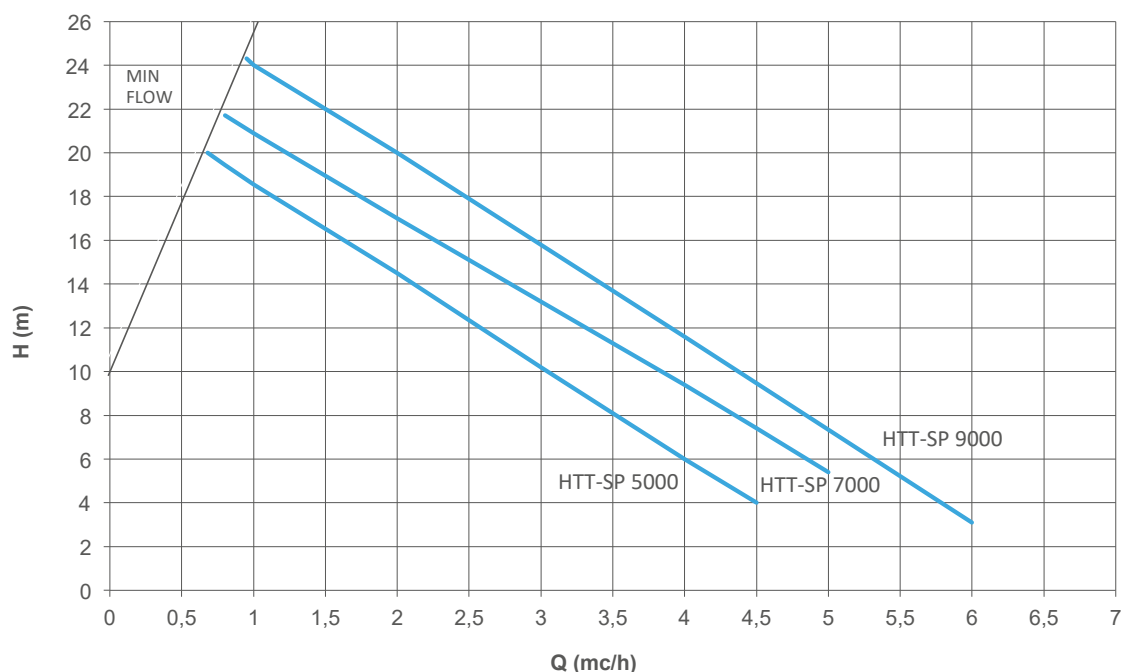
STANDARD:

- High torque magnetic coupling.
- Chemical resistant PTFE/carbon sleeve bearings.
- Static shaft in high purity ceramic.
- Direct starting motors.

OPTIONAL:

- DIN or ANSI flanges available.
- Baseplate.
- Available in ATEX version for zone 2 II3G (pump mod. EM-T SP).

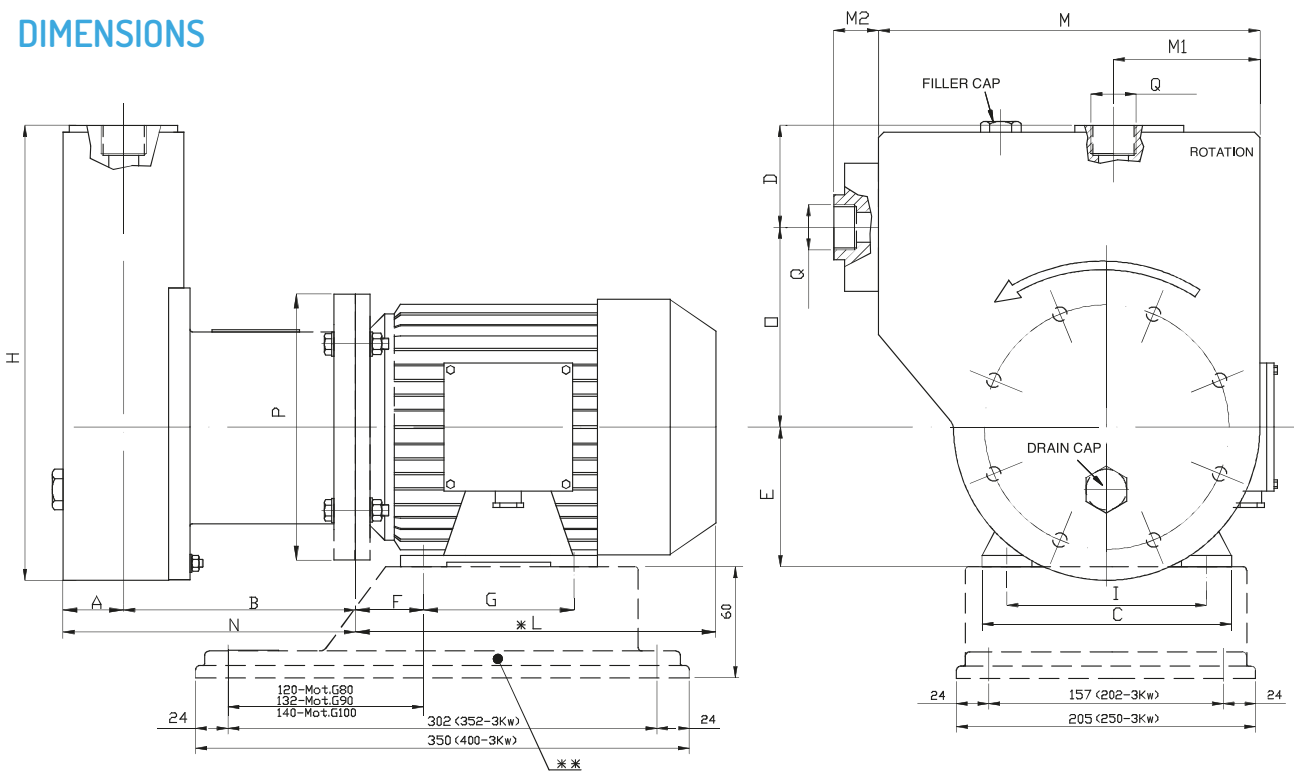
PERFORMANCE CURVES 50HZ - 2900 RPM



HTT-SP TECHNICAL DATA

| PUMP SIZE | MATERIAL | Q MAX | | H MAX | | SUCTION CONNECTION | DISCHARGE CONNECTION | SUITABLE MOTOR POWER (KW) - 2900 rpm | MOTOR FLANGE AND FRAME |
|-------------|----------|-------------|--------------|------------|-----------|--------------------|----------------------|--------------------------------------|------------------------|
| | | 50HZ (M3/H) | 60HZ (USGPM) | 50HZ (MLC) | 60HZ (FT) | | | | |
| HTT-SP 5000 | PP- PVDF | 4.5 | 23 | 18 | 90 | 1" FEMALE | 1" FEMALE | 0,75 | 80 - B3/B5 |
| | | | | | | | | 1,1 | 80 - B3/B5 |
| HTT-SP 7000 | PP- PVDF | 5 | 27 | 20 | 98 | 1" FEMALE | 1" FEMALE | 1,1 | 80 - B3/B5 |
| | | | | | | | | 1,5 | 90 S - B3/B5 |
| HTT-SP 9000 | PP- PVDF | 6 | 32 | 24 | 110 | 1" FEMALE | 1" FEMALE | 2,2 | 90 L - B3/B5 |
| | | | | | | | | 3 | 90 - B3/B5 |

HTT-SP DIMENSIONS



| PUMP TYPE | MOTOR FLANGE B3 - B5 | KW | DIMENSIONS - mm - | | | | | | | | | | | | | | | | |
|-------------|----------------------|------|----------------------|-----|-----|----|-----|----|-----|-----|-----|-----|-----|------|----|------------------------|-----|-----|-----------|
| | | | A | B | C | D | E | F | G | H | I | *L | M | M1 | M2 | N | O | P | Q |
| HTT-SP 5000 | 80 | 0,75 | PP = 45 PVDF = 41 | 175 | 160 | 70 | 80 | 50 | 100 | 325 | 125 | 215 | 270 | 97,5 | 33 | PP = 220 PVDF = 216 | 147 | 200 | 1" FEMALE |
| | | 1,1 | | | | | | | | | | 232 | | | | | | | |
| HTT-SP 7000 | 80 | 1,1 | PP = 45 PVDF = 41 | 175 | 160 | 70 | 80 | 50 | 100 | 325 | 125 | 232 | 270 | 97,5 | 33 | PP = 220 PVDF = 216 | 147 | 200 | 1" FEMALE |
| | | 1,5 | | | | | | | | | | 255 | | | | | | | |
| HTT-SP 9000 | 90 | 2,2 | PP = 45 PVDF = 41 | 175 | 170 | 70 | 90 | 56 | 125 | 325 | 140 | 280 | 270 | 97,5 | 33 | PP = 220 PVDF = 216 | 147 | 200 | 1" FEMALE |
| | | 2,2 | | | | | | | | | | 280 | | | | | | | |
| HTT-SP 9000 | 100 | 3 | PP = 45 PVDF = 41 | 175 | 200 | 70 | 100 | 63 | 140 | 325 | 160 | 340 | 270 | 97,5 | 33 | PP = 220 PVDF = 216 | 147 | 250 | 1" FEMALE |
| | | 3 | | | | | | | | | | 340 | | | | | | | |

* Different according to the manufacturer.

** OPTIONAL UPON REQUEST: Baseplate - Flanges.



GEMMECOTTI SRL

Via A. Volta 85/A
20816 Ceriano Laghetto MB
ITALY
EUROPEAN UNION

Ph: +39 02.96460406

Fax: +39 02.96469114

info@gemmecotti.com
www.gemmecotti.com

