



# IVALGATE

KNIFE GATE VALVE / VANNE À GUILLOTINE



# COMPANY'S PRESENTATION PRÉSENTATION DE L'ENTREPRISE



IVALTEC is a company specialized in the design, the manufacturing and the marketing of industrial valves. IVALTEC's valves are manufactured in Europe since the 80s, with originally a manufacturing of knife gate valves and ball check valves, fields in which we acquired an excellent reputation.

Thanks to more than 30 years of experience and a constant desire of improvement, we offer a wide range of products and bring concrete solutions to the needs of our customers in the most severe applications.

The main characteristics of our valves are their very high quality, their perfect tightness and their ease of maintenance.

The skills of our team, the modern technology that we use and our quality system enable us to offer products always more reliable and secure. Our know-how, our experience and our partners are the keys of the permanent optimization of the quality of our valves.

We supply a long list of customers including water treatment plants, chemical industry, thermal and nuclear power stations, paper mills, conversion companies and food industry, among another.

IVALTEC est une société spécialisée dans la conception, la fabrication et la commercialisation d'appareils de robinetterie industrielle. Les robinets IVALTEC sont fabriqués en Europe depuis les années 80, avec à l'origine une fabrication de vannes à guillotine et de clapets à boule, fabrications dans lesquelles nous avons acquis une excellente réputation.

Grâce à plus de 30 années d'expérience et un constant désir de perfectionnement, nous offrons à nos clients une large gamme de produits qui apportent des solutions concrètes dans les applications les plus sévères.

Les principales caractéristiques de nos robinets sont leur très haute qualité, leur parfaite étanchéité et leur facilité de maintenance.

Les compétences de notre équipe, les moyens techniques modernes que nous utilisons et notre système qualité nous permettent d'offrir des produits toujours plus fiables et sécurisés. Notre savoir-faire, notre expérience et nos partenaires sont les clés de l'optimisation permanente de la qualité de nos robinets.

Nous fournissons une longue liste de clients dans des domaines d'applications variées, parmi lesquels figurent les usines de traitement de l'eau, l'industrie chimique, les centrales thermiques et nucléaires, les papeteries, usines de transformation.



**KG 01**

Unidirectional  
knife gate valve

[page 2 and 4-7](#)



**KG 02**

Bidirectional  
knife gate valve

[page 3-7](#)



**KG 03**

Through conduit  
knife gate valve

[page 8](#)



**KG 04**

Square  
knife gate valve

[page 9](#)

## Other documentation upon request /Autres documentations sur demande



**KG 06**

Silo Knife  
gate valve



**KG 31**

Unidirectional  
knife gate  
valve for  
high working  
pressure :  
PN16 PN25  
PN40



**KG 13**

Rubber lined



**KG 08**

Penstocks



**KG 23**

Double knife  
gate valve

## MAIN CHARACTERISTICS

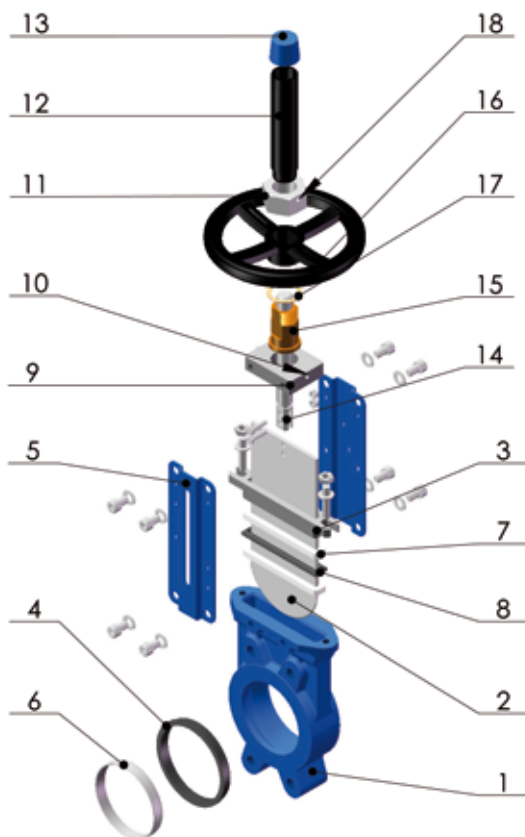
- Unidirectional knife gate valve
- Function open/close or regulating
- Zero leakage with elastomer seat
- Body: GG25, GGG40, WCB, CF8, CF8M, SS316L. Special material upon request
- End connection: Wafer or Lug type
- Exchangeable seat materials satisfying all demands
- All types of operators: HW, lever, gear, pneumatique DA or SA, electric, hydraulique

## CARACTÉRISTIQUES PRINCIPALES

- Vanne à guillotine unidirectionnelle
- Fonction ouverture/fermeture ou de réglage
- Zéro fuite grâce au siège en élastomère
- Corps: GG25, GGG40, WCB, CF8, CF8M, SS316L. Matériaux spéciaux sur demande
- Raccordement : Wafer ou Lug
- Matériaux du siège interchangeables
- Tous types d'actionneurs: manuel, levier, réducteur, pneumatique double effet ou simple effet, électrique, hydraulique



## STANDARD VERSION PARTS LIST KG01 / CONFIGURATION STANDARD KG01



18	FIXING SCREW/VIS	SS304	SS304
17	WASHER/RONDELLE	BRASS	BRASS
16	HANDWHEEL/VOLANT	STEEL	STEEL
15	STEM NUT/BAGUE	BRONZE	BRONZE
14	SPINDLE/TIGE	SS303	SS303
13	HOOD COVER/COUVERT	PLASTIC	PLASTIC
12	HOOD/TUBE	STEEL	STEEL
11	FIXING SCREW/ECROU	STEEL	STEEL
10	OIL HOLE/GRAISSAGE	STEEL	STEEL
9	YOKE/POTENCE	STEEL	STEEL
8	O-RING/JOINT TORE	NBR	EPDM
7	PACKING/GARNITURE	PTFE	PTFE
6	RETAINER/FRETTE	SS304	SS316
5	SUPPORT	STEEL	STEEL
4	SEAT/SIEGE	NBR	EPDM
3	PACKING GLAND/FOULOIR	DI	CF8M
2	KNIFE/PELLE	SS304	SS316
1	BODY/CORPS	GG25	CF8M
POS	DESIGNATION	CI VERSION VERSION FONTE	SS VERSION VERSION INOX

Other materials possible upon client's specification  
Autres matériaux sur demande

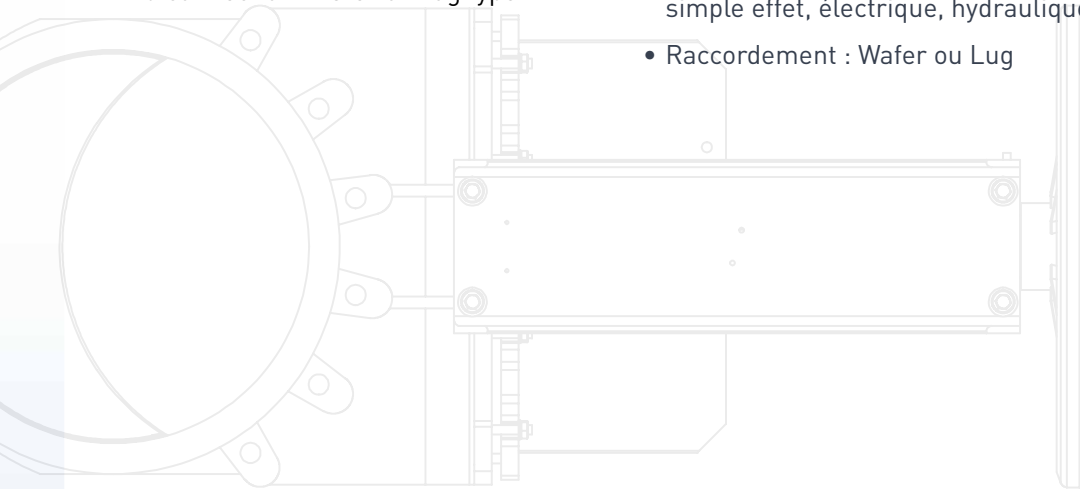
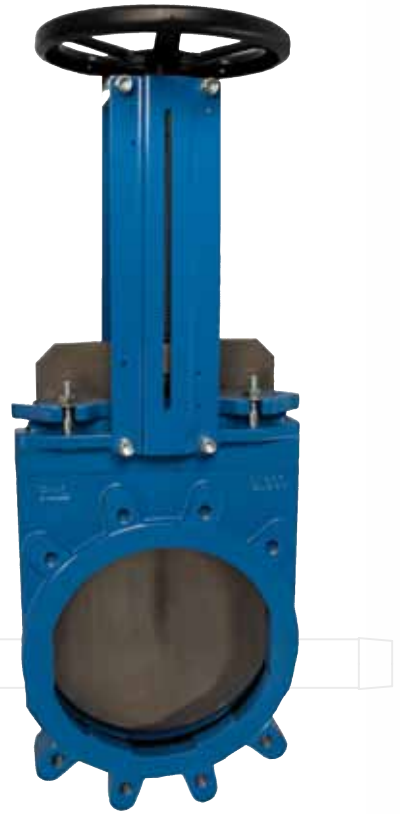


## MAIN CHARACTERISTICS

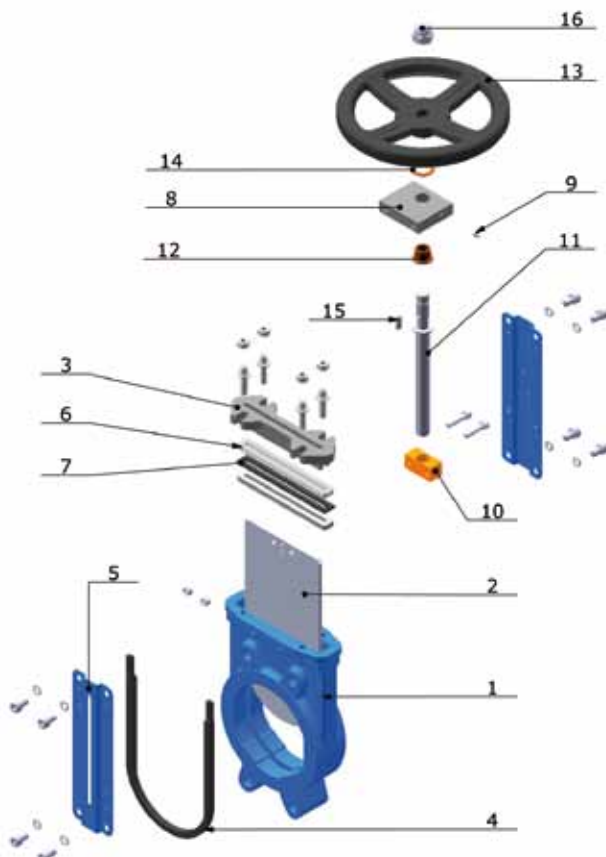
- Bidirectional knife gate valve
- Function open/close or regulating
- Zero leakage with elastomer seat
- Body: GG25, GGG40, WCB, CF8, CF8M, SS316L. Special material upon request
- All types of actuators: handwheel, pneumatic DA or SA, chain wheel and electric
- End connection: Wafer or Lug type

## CARACTÉRISTIQUES PRINCIPALES

- Vanne à guillotine bidirectionnelle
- Fonction ouverture / fermeture ou réglage
- Zéro fuite grâce au siège en élastomère
- Corps: GG25, GGG40, WCB, CF8, CF8M, SS316L. Matériaux spéciaux sur demande
- Tous types d'actionneurs: manuel, levier, pneumatique double effet ou simple effet, électrique, hydraulique
- Raccordement : Wafer ou Lug

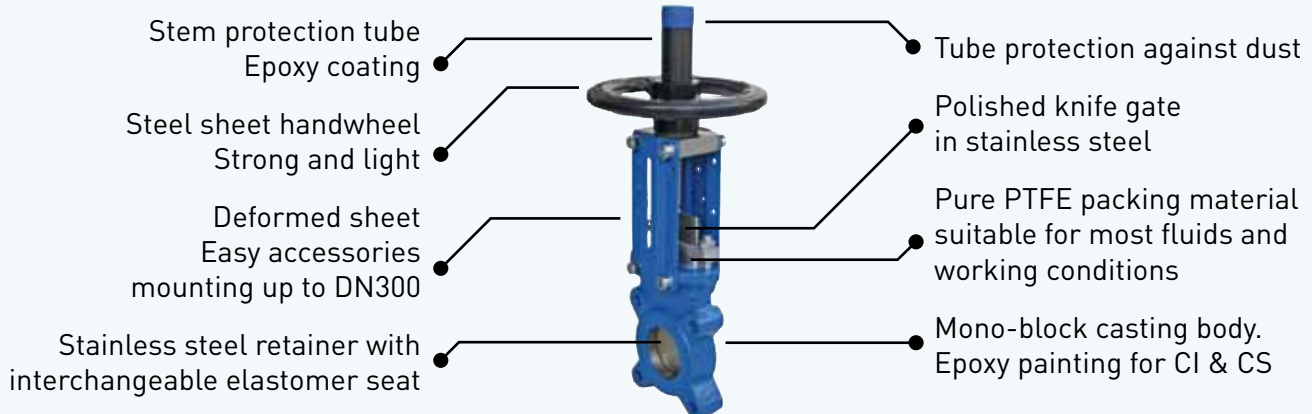


## STANDARD VERSION PARTS LIST KG02 / CONFIGURATION STANDARD KG02



16	FIXING SCREW/ÉCROU VOLANT	STEEL	STEEL
15	PIN/VIS	STEEL	STEEL
14	WASHER/RONDELLE	BRONZE	BRONZE
13	HANDWHEEL/VOLANT	STEEL	STEEL
12	STEM NUT/BAGUE	BRONZE	BRONZE
11	SPINDLE/TIGE	SS303	SS303
10	STEM NUT/ÉCROU	BRONZE	BRONZE
9	OIL HOLE/GRAISSAGE	STEEL	STEEL
8	YOKE/POTENCE	STEEL	STEEL
7	O-RING/JOINT TORIQUE	NBR	EPDM
6	PACKING/GARNITURE	PTFE	PTFE
5	SUPPORT	STEEL	STEEL
4	SEAT/SIEGE	NBR	EPDM
3	PACKING GLAND/FOULOIR	DI	CF8M
2	KNIFE/PELLE	SS304	SS316
1	BODY/CORPS	GG25	CF8M
POS	DESIGNATION	CI VERSION	SS VERSION

Other materials possible upon client's specification  
Autres matériaux sur demande



### Technical Information

Sizes	Flange drilling	Face-to-face dimension	Leakage rate
DN50-1200	EN 1092 PN 10	KG01 : Factory standard	EN 12266-1
	EN 1092 PN 16	KG02 : Factory standard	DIN3230
	ANSI B16.5 Class 150	KG05: MSS SP-81, TAPPI TIS 405-8	ISO5208
	ANSI B16.47 Class 150, serie A		MSS SP-81
	JIS B 2238 10K		
	BS 10 Table D*		

### Working pressure and temperature

- Valve body is designed as per PN10
- Shell test pressure : 1.5 times working pressure
- Tightness test pressure : 1.1 times differential working pressure

### Standard working pressure table

DN	50	65	80	100	125	150	200	250	300	350	400	450	500	600	700	800	900	1000	1200
P(bar)	10	10	10	10	10	10	10	8	6	4	4	3	3	3	2	2	2	2	2

Important note: working pressure can be adjusted according to client's request.

Working temperature is mainly determined by the seat materials, packing materials and body materials.

### Seat version KG01



### Seat material temperature range

Material	Temperature range *	Application	To avoid
EPDM	-20 to 120°C	drinking water, acides,	grease, mineral oils
NBR	-10 to 90°C	oils & petroleum, abrasive, sea water	Oxidizing agents
FPM/VITON	-10 to 180°C	chemicals, ozone, oils and fat	
PTFE	0 to 180°C	Chemicals, solvents	
Silicone	-20 to 200°C	High temperature, food	Moist media
Metal seat		Depending on body & packing material	

\*Please consult for extreme material temperature range

### Packing material temperature range

Material	Temperature range
PTFE	0 to 180°C
Graphite	-10 to 650°C



### Body material temperature range

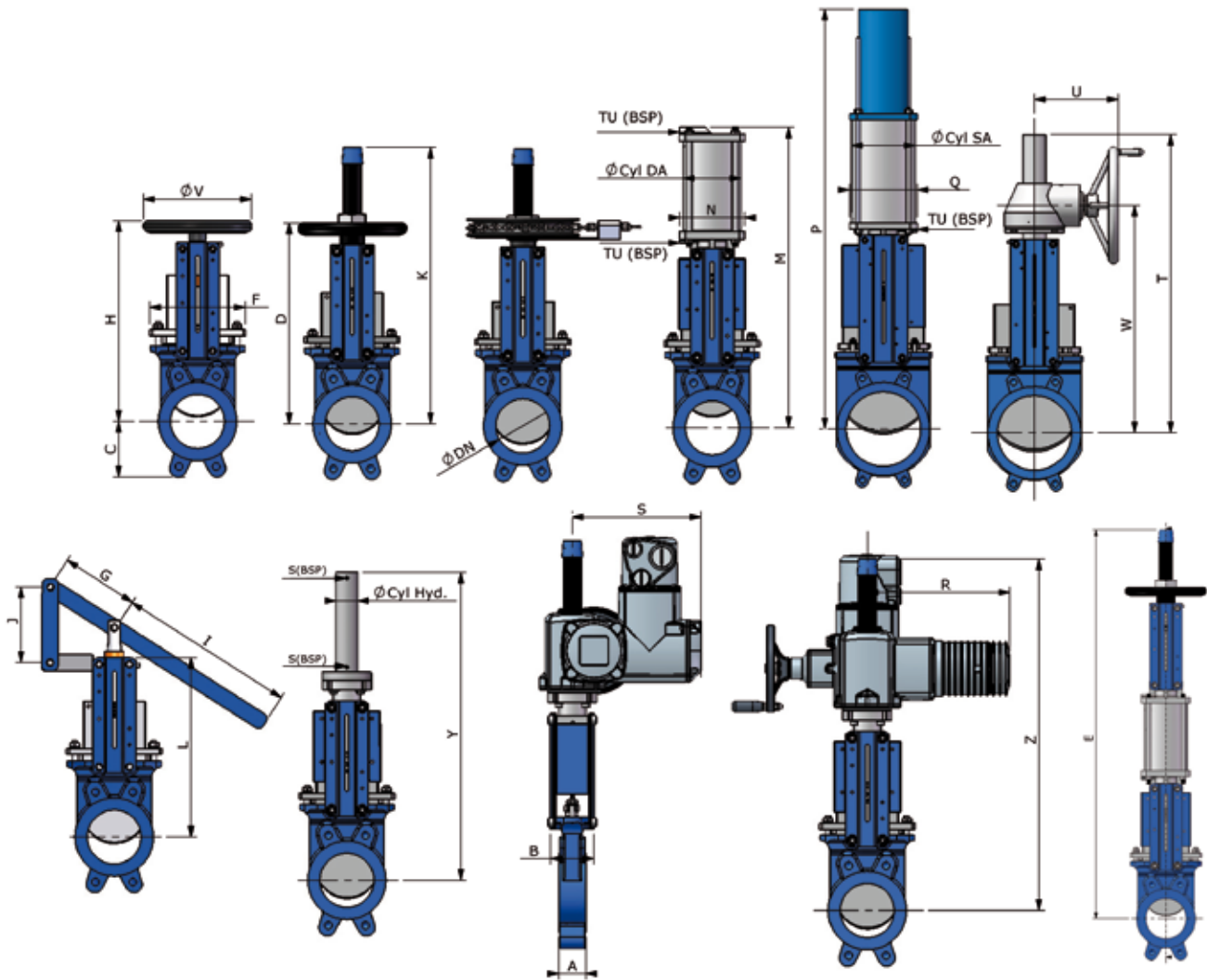
Material	Temperature range
Cast iron	-15 to 250°C
Ductile iron	-30 to 350°C
Carbon steel	-29 to 425°C
Stainless steel	-196 to 600°C

Attention: all temperatures given are indicative. Please consult for extreme temperature application



# DIMENSION TABLE

## TABLEAU DIMENSION



\*For R, S values, please consult AUMA documentation

DN	A	B	C	D	E	F	G	H	I	J	K	L	M	N	P	Q	T	U	V	W	Y	Z	Cyl DA	Cyl SA	Cyl Hyd.	TU (BSP)	S (BSP)
50	40	92	63	289	713	124	140	289	340	125	410	240	400	96	720	138	490	195	200	340	446	640	80	125	40	1/4"	1/2"
65	40	92	70	316	772	139	140	316	340	125	440	265	445	96	766	138	520	195	200	370	485	670	80	125	40	1/4"	1/2"
80	50	92	92	342	829	154	140	342	340	125	460	290	485	96	810	138	540	195	200	390	526	695	80	125	40	1/4"	1/2"
100	50	92	105	382	917	174	140	382	340	125	500	335	550	115	875	138	580	195	200	430	586	755	100	125	40	1/4"	1/2"
125	50	102	120	415	1075	192	140	415	440	170	585	373	630	138	975	175	620	195	250	465	655	810	125	160	40	1/4"	1/2"
150	60	102	130	458	1163	217	140	458	440	170	637	424	695	138	1066	175	690	195	250	520	732	870	125	160	40	1/4"	1/2"
200	60	120	160	575	1492	270	230	575	640	190	815	533	870	175	1380	218	910	195	300	620	906	1010	160	200	50	1/4"	1/2"
250	70	120	198	676	1810	326	230	676	680	285	1016	625	1035	218	1792	280	1020	195	300	720	1056	1125	200	250	50	3/8"	1/2"
300	70	120	234	776	2010	380	230	776	680	285	1116	732	1185	218	1932	280	1110	195	300	820	1208	1280	200	250	63	3/8"	3/4"
350	96	290	256	906	2391	438		906			1336		1380	270			1280	220	500	890	1380	1410	250		63	3/8"	3/4"
400	100	290	292	1012	2597	493		1012			1442		1540	270			1390	220	500	990	1534	1560	250		63	3/8"	3/4"
450	106	290	308	1098	2888	546		1098			1628		1680	382			1670	220	500	1080	1694	1730	320		80	1/2"	3/4"
500	110	290	340	1210	3109	620		1210			1740		1840	382			1780	220	500	1190	1858	1896	320		80	1/2"	3/4"
600	110	290	400	1416	3615	714		1416			2046		2145	382			1990	220	500	1400	2160	2124	320		80	1/2"	3/4"
700	110	400	470	1650		830					2290		2545	382			2340	260	800	1650	2525	2450	320		100	1/2"	3/4"
800	110	400	505	1830		970					2680		2850	382			2710	260	800	1860	2839	2670	320		100	1/2"	3/4"
900	110	400	555	2075		1040					3020		3175	382			3080	290	800	2090	3172	3000	320		125	1/2"	3/4"
1000	110	450	610	2260		1152					3400		3400	382			3350	290	800	2140	3496	3180	320		125	3/4"	3/4"
1200	150	450	725	2460		1255					3980		3880	538			4040	290	800	2620	4174	4050	350		125	3/4"	3/4"

DN	WEIGHT (kg)									AUMA configuration		
	HW RS	HW NRS	Chainwheel	Lever	Pneumatic DA	Pneumatic SA	Bevel gear	Hydraulic	Electric	Tr stem	ISO top	AUMA Type (Form A)
50	7	7	7	8	7	19	17	7	24	20X4	F7/F10	SA 07.1
65	8	8	8	8.5	8	22	18	8	25	20X4	F7/F10	SA 07.1
80	9	9	9	10	9	23	19	9	26	20X4	F7/F10	SA 07.1
100	10	10	10	11	11	24	20	12	27	20X4	F7/F10	SA 07.1
125	13	13	13	14	16	35	24	15	30	20X4	F7/F10	SA 07.5
150	16	16	16	17	19	36	26	20	32	20X4	F7/F10	SA 07.5
200	28	28	28	28	32	66	50	31	42	25X5	F7/F10	SA 07.5
250	42	42	42	43	51	98	65	44	55	25X5	F7/F10	SA 07.5
300	56	56	56	57	65	120	78	62	72	25X5	F7/F10	SA 07.5
350	108	108	108		122		106	100	99	35X6	F7/F10	SA 10.1
400	130	130	130		146		134	138	136	35X6	F7/F10	SA 10.1
450	166	166	166		185		175	161	166	35X6	F10/F14	SA 14.1
500	203	203	203		266		216	223	245	35X6	F10/F14	SA 14.1
600	293	293	293		358		285	325	362	35X6	F10/F14	SA 14.1
700	440		440		560		430	481	432	50X8	F14	SA 14.5
800	570		570		680		615	678	630	50X8	F14	SA 14.5
900	740		740		840		768	861	764	50X8	F14	SA 14.5
1000	920		920		1050		972	1103	998	50X8	F14	SA 14.5
1200	1350		1350		1360		1300	1430	1350	60X9	F16	SA 16.1

### ACCESSORIES/ACCESSOIRES



Deflector  
(round, V form)



Inductive limit switches



Mechanic limit switches



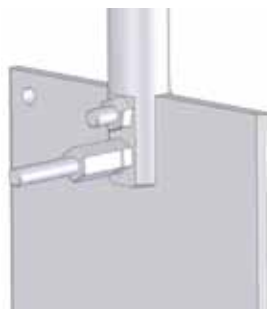
Solenoid valves



Stem extension



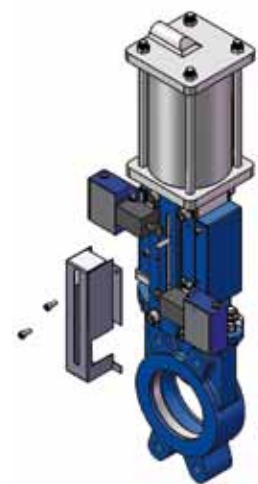
Actuator manual override



Position indicator



Flushing holes tubing  
installation

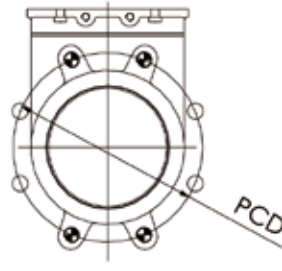


indicator protection

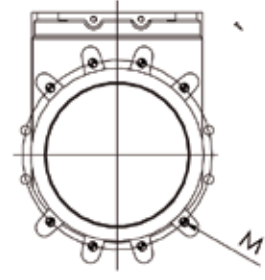
# WAFER VALVE FLANGE DETAILS DÉTAILS BRIDE VANNE WAFER



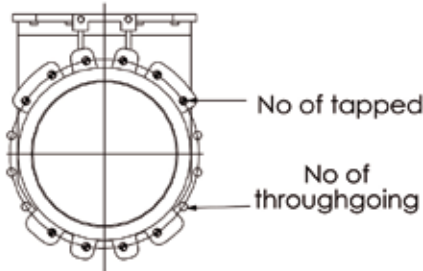
DN50-65



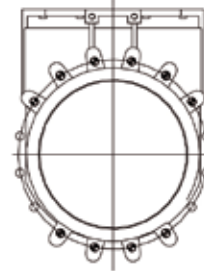
DN80-200



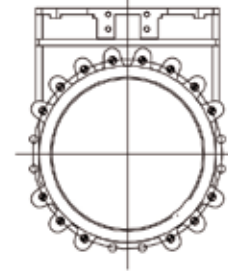
DN250-300



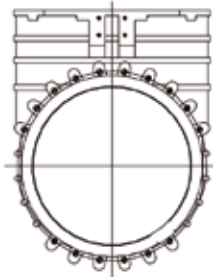
DN350



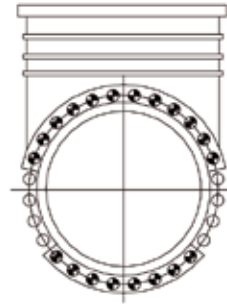
DN400



DN450-600



DN700-800



DN900-1000



DN1200

1200	1380	12	20	M36	30
1000	1160	8	20	M33	20
900	1050	8	20	M30	20
800	950	8	16	M30	20
700	840	8	16	M27	20
600	725	6	14	M27	24
500	620	6	14	M24	24
450	565	6	14	M24	24
400	515	6	10	M24	20
350	460	6	10	M20	19
300	400	6	6	M20	15
250	350	6	6	M20	15
200	295	4	4	M20	12
150	240	4	4	M20	12
125	210	4	4	M16	10
100	180	4	4	M16	10
80	160	4	4	M16	10
65	145	0	4	M16	8
50	125	0	4	M16	8
DN	PCD (mm)	No of throughgoing	No of tapped	Bolt size	Prof.
<b>PN 10</b>					

600	730	6	18	M30
500	620	6	14	M24
450	565	6	14	M24
400	510	6	10	M24
350	445	6	10	M22
300	410	6	6	M24
250	355	6	6	M24
200	295	6	6	M20
150	240	4	4	M20
125	210	4	4	M16
100	180	4	4	M16
80	160	4	4	M16
65	145	0	4	M16
50	125	0	4	M16
DN	PCD (mm)	No of throughgoing	No of tapped	Bolt size
<b>EN 1092 PN 16</b>				

600	749.3	6	14	1-1/4"
500	635.0	6	14	1-1/8"
450	577.8	6	10	1-1/8"
400	539.8	6	10	1"
350	476.2	4	8	1"
300	431.8	6	6	7/8"
250	362.0	6	6	7/8"
200	298.4	4	4	3/4"
150	241.3	4	4	3/4"
125	215.9	4	4	3/4"
100	190.5	4	4	5/8"
80	152.4	0	4	5/8"
65	139.7	0	4	5/8"
50	120.6	0	4	5/8"
DN	PCD (mm)	No of throughgoing	No of tapped	Bolt size (UNC)
<b>ANSI B16.5 class 150</b>				

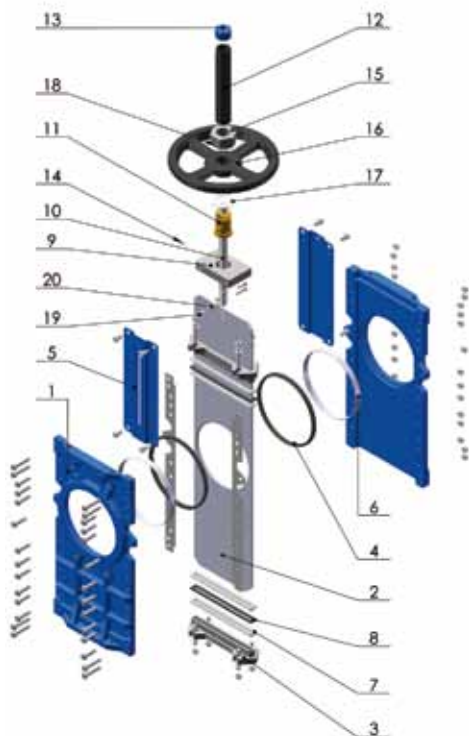


## MAIN CHARACTERISTICS

- Through conduit knife gate valve
- Function open/close or regulating
- Body : GG25, GGG40, WCB, CF8, CF8M, SS316L.  
Special material upon request
- End connection: Wafer type
- Bidirectional tightness
- All types of operators: HW, lever, gear, pneumatic DA or SA, electric, hydraulic

## CARACTÉRISTIQUES PRINCIPALES

- Vanne à guillotine pelle traversante
- Fonction d'ouverture / fermeture ou de réglage
- Corps : GG25, GGG40, WCB, CF8, CF8M, SS316L.  
Matériaux spéciaux sur demande
- Raccordement : wafer
- Etanchéité bidirectionnelle
- Tous types d'actionneurs: manuel, levier, réducteur, pneumatique double effet ou simple effet, électrique, hydraulique



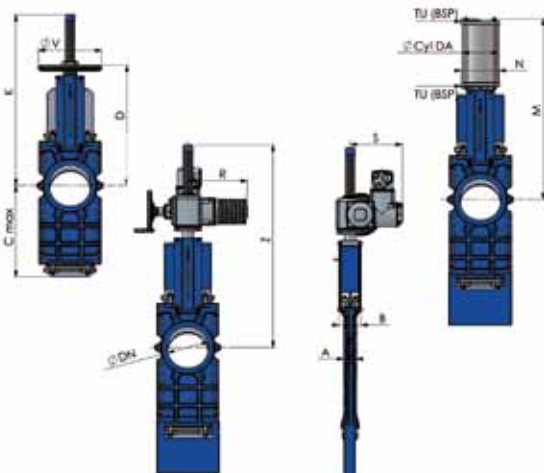
SOFT SEAT VERSION



REINFORCED SOFT SEAT VERSION



METAL / METAL SEAT VERSION



20	INDICATOR NUT/ENTRETOISE	STEEL	STEEL
19	INDICATOR/INDICATEUR	STEEL	STEEL
18	FIXING SCREW/VIS	SS304	SS304
17	WASHER/RONDELLE	BRASS	BRASS
16	HANDWHEEL/VOLANT	STEEL	STEEL
15	FIXING SCREW/ÉCROU VOLANT	STEEL	STEEL
14	OIL HOLE/GRAISSAGE	STEEL	STEEL
13	HOOD COVER/COUVERT	PLASTIC	PLASTIC
12	HOOD/TUBE	STEEL	STEEL
11	STEM NUT/BAGUE	BRONZE	BRONZE
10	SPINDLE/TIGE	SS303	SS303
9	YOKE/POTENCE	STEEL	STEEL
8	O-RING/JOINT TORE	NBR	EPDM
7	PACKING/GARNITURE	PTFE	PTFE
6	RETAINER/FRETTE	SS304	SS316
5	SUPPORT	STEEL	STEEL
4	SEAT/SIEGE	NBR	EPDM
3	PACKING GLAND/FOULOIR	DI	CF8M
2	KNIFE/PELLE	SS304	SS316
1	BODY/CORPS	GG25	CF8M
POS	NAME	CI VERSION	SS VERSION

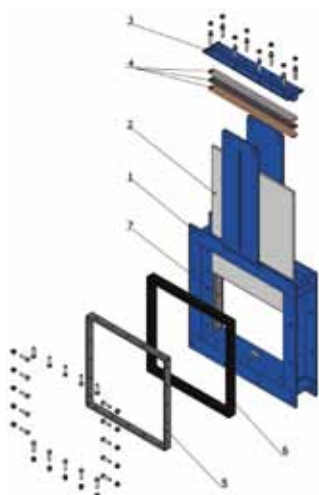
DN	A	B	C max	D	V	K	M	N	Cyl DA	TU (BSP)	Z
DN50	40	92	225	289	200	417	400	96	80	1/4"	640
DN65	40	92	265	316	200	442	445	96	80	1/4"	670
DN80	50	92	305	342	200	469	485	96	80	1/4"	695
DN100	50	92	365	382	200	509	550	115	100	1/4"	755
DN125	50	102	430	415	250	593	630	138	125	1/4"	810
DN150	60	102	495	458	250	644	695	138	125	1/4"	870
DN200	60	120	630	575	300	825	870	175	160	1/4"	1010
DN250	70	120	765	676	300	1010	1035	218	200	3/8"	1125
DN300	70	120	895	776	300	1094	1185	218	200	3/8"	1280
DN350	96	290	1020	906	500	1319	1380	270	250	3/8"	1410
DN400	100	290	1165	1012	500	1394	1540	270	250	3/8"	1560
DN450	106	290	1325	1098	500	1613	1680	382	320	1/2"	1730
DN500	110	290	1450	1210	500	1703	1840	382	320	1/2"	1896
DN600	110	290	1750	1416	500	1973	2145	382	320	1/2"	2124

# KG 04



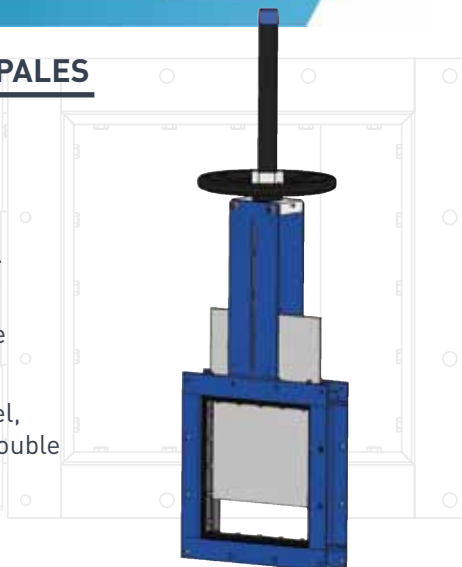
## MAIN CHARACTERISTICS

- Square knife gate valve
- Function open/close or regulating
- Body: WCB, CF8, CF8M, SS316L. Special material upon request
- End connection: company standard
- All types of operators: HW, lever, gear, pneumatic DA or SA, electric, hydraulic

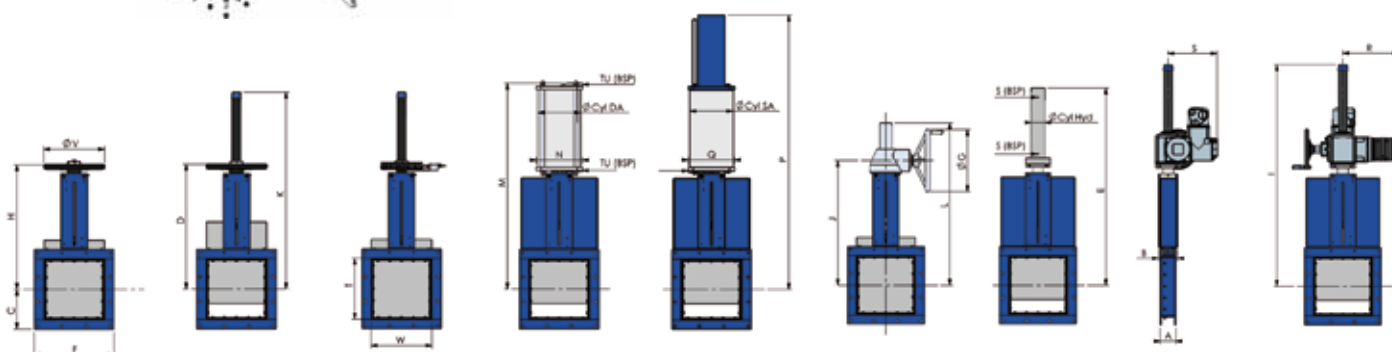


## CARACTÉRISTIQUES PRINCIPALES

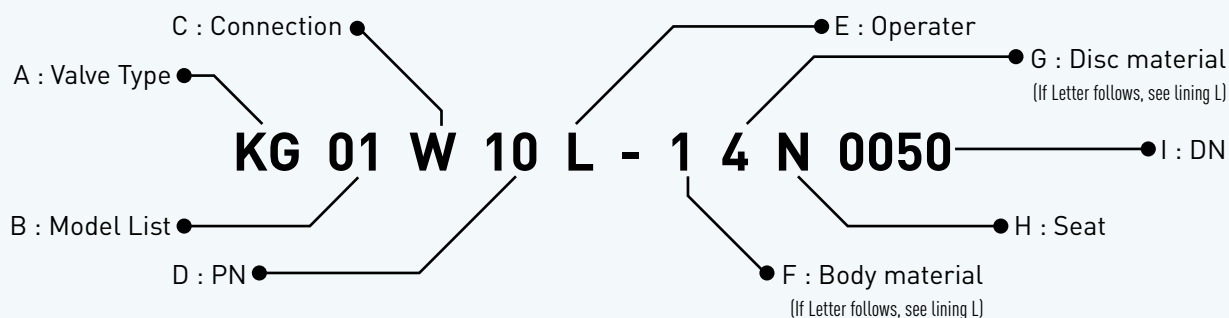
- Vanne à guillotine carrée
- Fonction ouverture / fermeture ou réglage
- Corps: WCB, CF8, CF8M, SS316L. Matériaux spéciaux sur demande
- Raccordement: selon standard de l'entreprise
- Tous types d'actionneurs : manuel, levier, réducteur, pneumatique double effet ou simple effet, électrique, hydraulique



POS	NAME	CI VERSION	SS VERSION
7	GUIDES	AISI304	AISI304-AISI316
6	O-RING/JOINT TORE	EPDM	EPDM
5	FLANGE SEAL/BRIDE	AISI304	AISI316
4	PACKING/GARNITURE	SYNT-PTFE	SYNT-PTFE
3	PACKING GLAND/FOULAIR	S275JR	AISI304-AISI316
2	KNIFE/PELLE	AISI304	AISI304-AISI316
1	BODY/CORPS	S275JR	AISI304-AISI316



WxT	A	B	C	D	E	F	G	H	I	J	K	L	M	N	P	Q	V	Cyl DA	Cyl SA	Cyl Hyd	TU (BSP)	S (BSP)
125x125	80	97	107,5	323	561	215	300	323	718	401	483	556	538	138	816	135	250	125	125	25	1/4"	3/8"
150x150	80	97	120	360	623	240	300	360	772	439	540	619	597	138	861	135	250	125	125	25	1/4"	3/8"
200x200	80	97	145	444	723	290	300	444	879	514	684	744	739	175	939	135	300	160	125	25	1/4"	3/8"
250x250	80	106	170	521	903	340	300	521	970	589	806	869	880	218	1130	135	300	200	125	25	3/8"	3/8"
300x300	80	106	195	671	1028	390	300	671	1175	667	1021	994	1078	218	1255	135	300	200	125	25	3/8"	3/8"
350x350	100	111	225	689	1156	450	300	689	1269	744	1089	1124	1163	270		500	250		32	3/8"	3/8"	
400x400	100	111	250	765	1286	500	300	765	1313	819	1246	1249	1293	270		500	250		32	3/8"	3/8"	
450x450	100	123	275	853	1421	550	450	853	1485	904	1353	1384	1435	382		500	320		32	1/2"	3/8"	
500x500	100	123	300	932	1558	600	450	932	1618	981	1544	1511	1562	382		500	320		40	1/2"	3/8"	
550x550	100	123	325	1007	1683	650	450	1007	1697	1056	1617	1636	1650	382		500	320		40	1/2"	3/8"	
600x600	100	123	350	1082	1808	700	450	1082	1790	1131	1742	1761	1811	382		500	320		40	1/2"	3/8"	
650x650	100	123	375	1157	1933	750	450		1857	1206	1867	1886	1880	382		500	320		50	1/2"	3/8"	
700x700	120	143	405	1298	2097	810	450		2098	1297	2033	2027	2193	382		800	320		50	1/2"	3/8"	
750x750	120	143	430	1373	2222	860	450		2173	1372	2159	2152	2230	382		800	320		50	1/2"	3/8"	
800x800	120	143	455	1448	2347	910	450		2288	1447	2284	2277	2468	382		800	320		50	1/2"	3/8"	
900x900	140	163	510	1598	2597	1020	450		2523	1597	2534	2527	2698	382		800	320		63	1/2"	3/8"	
1000x1000	140	163	560	1748	2847	1120	450		2668	1747	2799	2777	2888	382		800	320		63	3/4"	3/8"	
1200x1200	160	181	665	2049	3387	1320	650		3639	2011	3769	3251	3469	538		800	350		80	3/4"	1/2"	



### A : Valve Type

<b>BV</b>	Butterfly valve
<b>VB</b>	Ball valve
<b>CV</b>	Check valve
<b>GV</b>	Gate valve
<b>KG</b>	Knife gate valve
<b>GL</b>	Globe valve
<b>DM</b>	Diaphragm valve
<b>EX</b>	Expansion joint
<b>PL</b>	Plug valve

### C : Connection

<b>W</b>	Wafer
<b>F</b>	Flange
<b>T</b>	Threaded BSP
<b>N</b>	Threaded NPT
<b>L</b>	Lug
<b>S</b>	Socket welding
<b>B</b>	Butt welding

### E : Actuators

<b>B</b>	Bare shaft
<b>L</b>	Lever
<b>H</b>	Handwheel
<b>N</b>	Handwheel NRS
<b>G</b>	Gear
<b>C</b>	Chain
<b>D</b>	DA pneumatic
<b>S</b>	DA+HW security
<b>O</b>	SA pneumatic normally open
<b>C</b>	SA pneumatic normally close
<b>E</b>	Electric
<b>Y</b>	Hydraulic

### H : Seat

<b>M</b>	Metal/Metal
<b>N</b>	NBR
<b>E</b>	EPDM
<b>F</b>	FKM
<b>P</b>	PTFE
<b>S</b>	SS
<b>Y</b>	HF

### B : Model List

<b>KG01</b>	Unidirectional PN10
<b>KG21</b>	KG01+counter seat
<b>KG31</b>	Similar to KG01, but heavy duty
<b>KG13</b>	Rubber lined
<b>KG02</b>	Bidirectional PN10
<b>KG23</b>	Bi-gate knife gate valve
<b>KG03</b>	Through conduit knife gate valve
<b>KG04</b>	Square knife gate valve
<b>KG05</b>	Knife gate valve acc. To MSS SP81
<b>KG06</b>	Silo Knife gate valve
<b>KG08</b>	Penstocks

### D : PN

PN	ANSI	JIS
06 : PN 6	1A : 150	1K : 10K
10 : PN 10	3A : 300	2K : 20K
16 : PN 16	4A : 400	4K : 40K
20 : PN 20	6A : 600	
25 : PN 25	8A : 800	
40 : PN 40	9A : 900	
50 : PN 50	0A : 1500	
63 : PN 63	2A : 2500	
10 : PN 100		
20 : PN 200		
40 : PN 400		

### F/G : Material

<b>1</b>	GG25
<b>2</b>	GGG40
<b>3</b>	CS
<b>4</b>	304
<b>5</b>	Aluminium
<b>6</b>	SS316
<b>7</b>	Al-Br
<b>8</b>	Duplex
<b>9</b>	Special alloy or other material
<b>0</b>	No disc

### L : Lining

<b>A</b>	Natural rubber
<b>B</b>	Butyl rubber
<b>R</b>	Ebonite
<b>P</b>	PTFE
<b>H</b>	Hypalon rubber
<b>N</b>	Neoprene rubber
<b>P</b>	Ethylene Propylene
<b>R</b>	Nitrile rubber
<b>S</b>	Silicone rubber
<b>V</b>	FKM rubber





IVALTEC

[www.ivaltec.fr](http://www.ivaltec.fr)

Tel : +33 275 854 465 - 0800 1404 800  
Fax : +33 465 122 054 - 01020 Villaverdun  
val@ivaltec.fr France



Other range of products  
Découvrez nos autres  
gammes de produits

