

DRUM PUMPS

FOR EACH LIQUID
THE RIGHT DRUM PUMP

New ++ New ++ New ++

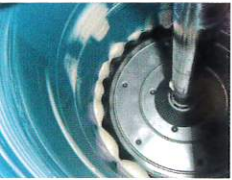
Big power
light weight

Eccentric screw drum pumps



Grease,
cremes, non
flowable media

High pressure drum pumps



g[®]
grün-pumpen
take out, what's in

Traditional drum pumps

Drum pumps with mechanical seal



Applications	PP for aggressive liquids like acids, caustics, vegetable oils, paints ... PVDF highly aggressive liquids like concentrated or mixed acids, ... SS acids, caustics, fruit-juices, milk, paints, thin-bodied oils, ... HC highly aggressive liquids like concentrated or heated acids and solvents, ...
Pump tubes	tube: polypropylene (PP), polyvinylidene fluoride (PVDF), stainless steel (SS) or Hastelloy C4 (HC) seal: mechanical seal immersion depth: 700, 1000, 1200 mm and special immersion depth
Drive motors	electrical: p310 = 520 Watt, 230 Volt / 50 Hz, 115 Volt / 60 Hz p400 = 850 Watt, 230 Volt / 50 Hz, 115 Volt / 60 Hz pneumatical: d600 = 600 Watt at 6 bar compressed air
Performance	delivery rate max. 150 l/min delivery head max. 27 mWS viscosity max. 700 mPas

Modern multipurpose drum pumps

Sealless drum pumps



Applications	PP for aggressive liquids like acids, caustics, vegetable oils, paints ... PVDF highly aggressive liquids like concentrated or mixed acids, ... SS acids, caustics, fruit-juices, milk, paints, thin-bodied oils, ... HC highly aggressive liquids like concentrated or heated acids and solvents, ...
Pump tubes	tube: polypropylene (PP), polyvinylidene fluoride (PVDF), stainless steel (SS) or Hastelloy C4 (HC) seal: sealless immersion depth: 700, 1000, 1200 mm and special immersion depth
Drive motors	electrical: p310 = 520 Watt, 230 Volt / 50 Hz, 115 Volt / 60 Hz p400 = 850 Watt, 230 Volt / 50 Hz, 115 Volt / 60 Hz pneumatical: d600 = 600 Watt at 6 bar compressed air
Performance	delivery rate max. 150 l/min delivery head max. 27 mWS viscosity max. 800 mPas

For toxic liquids

Drum pumps with magnetic coupling ...



Applications	suitable for pumping toxic, gaseous and hazardous liquids due to being hermetically sealed with no leakage.
Pump tubes	tube: polypropylene (PP), stainless steel (SS) immersion depth: 700, 1000, 1200 mm and special immersion depth
Drive motors	electrical: p310 = 520 Watt, 230 Volt / 50 Hz, 115 Volt / 60 Hz p400 = 850 Watt, 230 Volt / 50 Hz, 115 Volt / 60 Hz pneumatical: d600 = 600 Watt at 6 bar compressed air
Performance	delivery rate max. 150 l/min delivery head max. 22 mWS viscosity max. 50 mPas

For each problem the right solution.

For inflammable liquids

Explosion-proof drum pumps in stainless steel and HC



Applications	SS inflammable liquids according to VbF HC highly aggressive and inflammable liquids
Pump tubes	tube: stainless steel (SS) or Hastelloy C4 (HC) seal: mechanical seal or sealless immersion depth: 700, 1000, 1200 mm and special immersion depth
Drive motors	electrical: Ex700 = 700 Watt, 230 Volt / 50 Hz (ATEX) pneumatical: d600 = 600 Watt at 6 bar compressed air (ATEX)
Performance	delivery rate max. 150 l/min delivery head max. 17 mWS viscosity max. 600 mPas

For mixed liquids

Mixing drum pumps in PP and stainless steel



Applications	PP aggressive emulsions, dispersions and suspensions SS paints and lacquers and other mixed and inflammable liquids
Pump tubes	tube: polypropylene (PP) or stainless steel (SS) seal: sealless immersion depth: 700, 1000, 1200 mm and special immersion depth
Drive motors	electrical: p310 = 520 Watt, 230 Volt / 50 Hz, 115 Volt / 60 Hz p400 = 850 Watt, 230 Volt / 50 Hz, 115 Volt / 60 Hz explosion-proofed: Ex700 = 700 Watt, 230 Volt / 50 Hz, 115 Volt / 60 Hz (ATEX) pneumatical: d600 = 600 Watt at 6 bar compressed air
Performance	delivery rate max. 145 l/min delivery head max. 21 mWS viscosity max. 800 mPas



GLP25 - for many applications

The innovative and mobile laboratory / industry pump



Click-joint

Applications	general: non inflammable liquids, acids and basis low concentrated, fluids of medium viscosity (colours, emulsions, dispersions, suspensions, oils) extra liquids: inflammable liquids when ATEX is not required (special laboratory conditions) pumping heavy and viscous liquids only in small quantities, motor temperature is limited
Motor	electric: max. 160 W, 230 Volt / 50 Hz
delivery rate	0 - 30 l/min with discharge tube
pump units	wetted materials: PP, Stainless Steel, FKM length of tube: 500, 700, 1000 mm



different container sizes



discharge tube, nozzle



For slightly viscous liquids

Feed-screw drum pumps in PP und stainless steel



Applications	PP aggressive medium-viscosity liquids and paints, vegetable oils, cosmetics, SS paints, lacquers, fruit-juices, oils, vegetable oils, cosmetics, foods,
Pump tubes	tube: polypropylene (PP) or stainless steel (SS) seal: mechanical seal or sealless immersion depth: 700, 1000, 1200 mm and special immersion depth
Drive motors	electrical: p400 = 850 Watt, 230 Volt / 50 Hz, 115 Volt / 60 Hz, (universal motor) pd500 = 0,55 kW, single 230 V / 50 Hz or three-phase 400 V / 50 Hz pneumatical: d600 = 600 Watt at 6 bar compressed air
Performance	delivery rate max. 115 l/min delivery head max. 14 mWS viscosity max. 1500 mPas

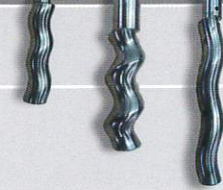

New connection technology: metal replaces plastic, robust for use in harsh environments

New ++ New ++ New ++

For medium-viscosity liquids

Eccentric screw pump SB stainless steel for big capacity



Application	big quantities, often mobile use, for easy use oils, soaps, glycerin, glue, foods	
Pump tubes	tube: stainless steel (SS) stator: PTFE rotor: stainless steel immersion depth: 100mm, 1100mm, special length on demand	
Drive motors	Quick change coupling system with safety bracket (SB) 1-phase induction motor 230 V, 0,37 kW, 1400 rpm 3-phase induction motor 400 V, 0,37 kW, 1400 rpm	
Performance	delivery rate: 4 - 75 l/min delivery head: 2 - 50 bar viscosity: bis 5000 mPas	

New connection technology: metal replaces plastic, robust for use in harsh environments

For high-viscosity liquids

Eccentric screw drum pumps in stainless steel



Applications	for pumping high-viscosity liquids like resin, paints, lacquers, glue, oil, soap, shampoo, ointment, honey, sirup, tomato paste, fruit concentrate, molasse, glucose, ...
Pump tubes	tube: stainless steel (SS) stators: NBR-light, PTFE seal: mechanical seal or packing gland immersion depth: 1000 mm and special immersion depth
Drive motors other on demand	rigid or quick release coupling electrical: 0,37 – 1,5 kW, 700 or 900 rpm, 400 Volt / 50 Hz pneumatical: 0,5 – 1,1 kW, up to 1000 rpm at 6 bar compressed air
Performance	delivery rate max. 50 l/min delivery head max. 12 bar viscosity max. 100.000 mPas



New ++ New ++ New ++ New High pressure version: grease, cremes, non flowable media
Performance: delivery rate max. 15l/min, pressure max. 50 bar

Advantages of grün-drum pumps

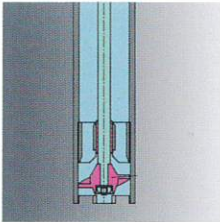


mechanical seal



sealless

- no inner-tube
- easily accessible shaft
- easy to clean
- solid shaft
- mechanical seal



singlestage design



multistage design

- **singlestage design**
- big discharge flows
- **multistage design**
- lower noise
- more stages possible, gives more pressure



feed-screw

- **with feed-screw**
- for medium-viscous liquids
- smooth pumping of liquids
- low noise with three-phase motor



quick release coupling



magnetic coupling

- **quick release coupling**
- speedy connection
- robust design
- rugged bow-gear coupling
- suitable for aggressive environments

- **magnetic coupling**
- hermetically sealed
- for gaseous and dangerous liquids
- no leakage



quick release coupling

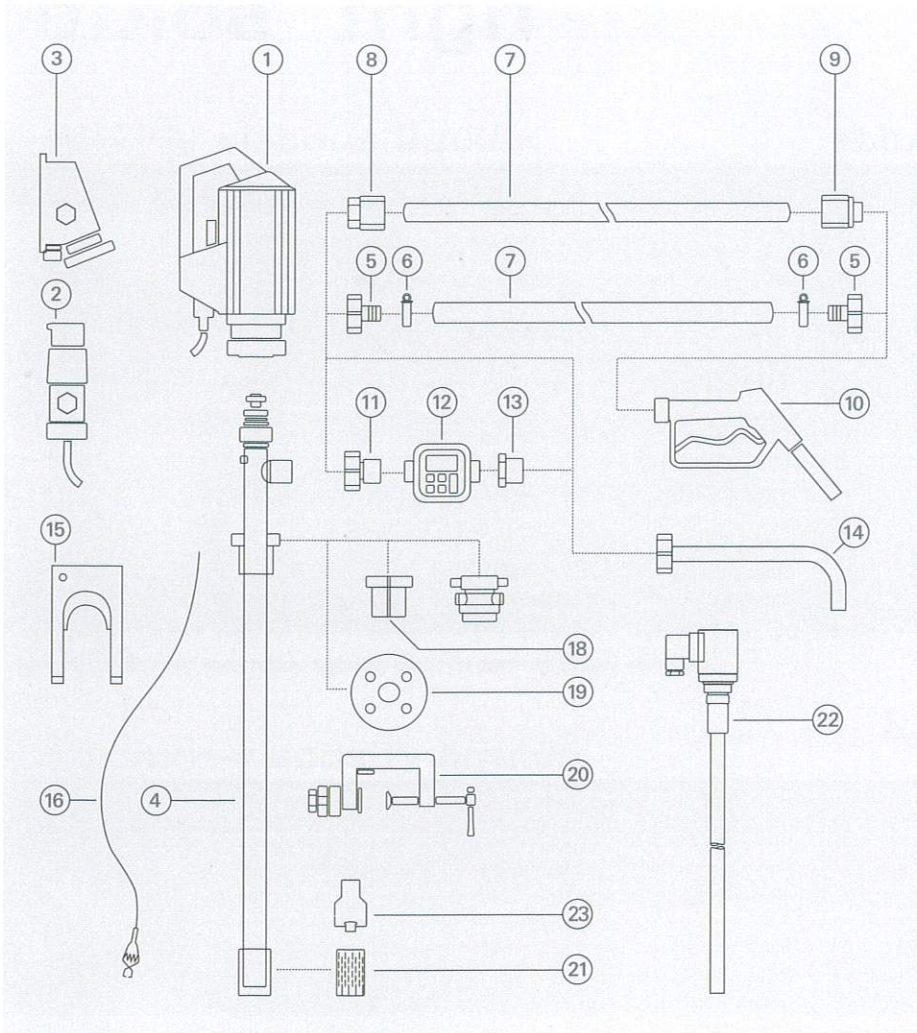


rigid connection

- **Eccentric screw barrel pump with quick release coupling**
- removable drive motor
- easy and safe handling with the separate pump tube
- no lifting device necessary
- it's possible to drive several pump tubes with only one motor

- **rigid connection** of drive motor and pump tube

Accessories



- 1 Drive motor
- 2 Explosion-proof plug
- 3 Explosion-proof socket
- 4 Pump tube
- 5 Hose connector
- 6 Hose clamps
- 7 Hose
- 8 Hose fittings
- 9 Hose fittings
- 10 Nozzle
- 11 Flow meter connection
- 12 Flow meter
- 13 Reducing piece
- 14 Discharge spout
- 15 Wall bracket
- 16 Equipotential bonding cable
- 17 Emission proof drum adapter
- 18 Drum adapter
- 19 Installation flange
- 20 Clamping device
- 21 Foot strainer
- 22 Level switch
- 23 Foot valve

grün-pumpen gmbH
 Philipp-Reis-Str. 3
 63755 Alzenau



take out, what's in.