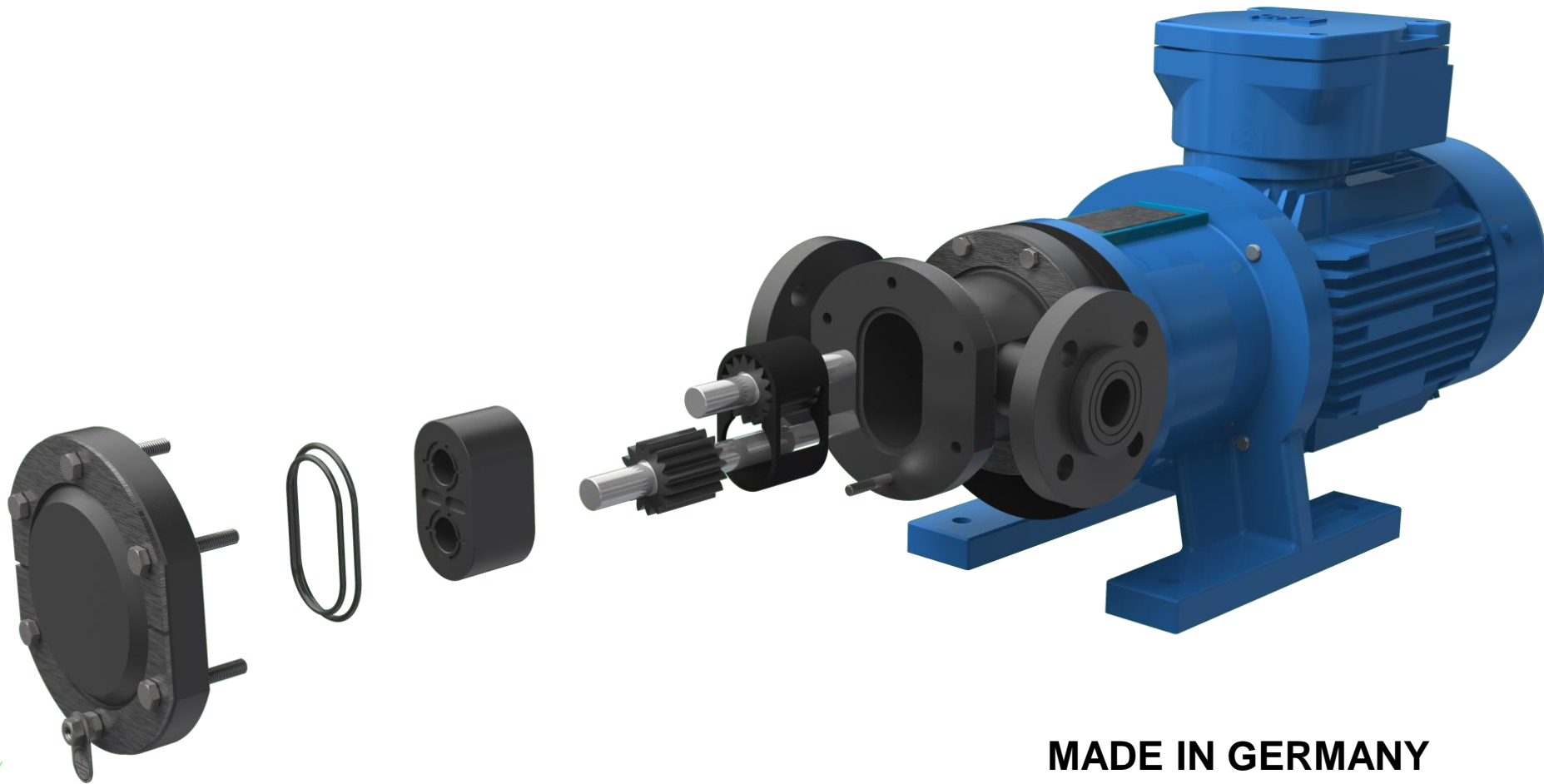


# MAGNETIC DRIVEN GEAR PUMP

Series: **TEF-MAG™**

*...YOUR corrosion resistant solution for low flow and high discharge pressure applications...*



**MADE IN GERMANY**

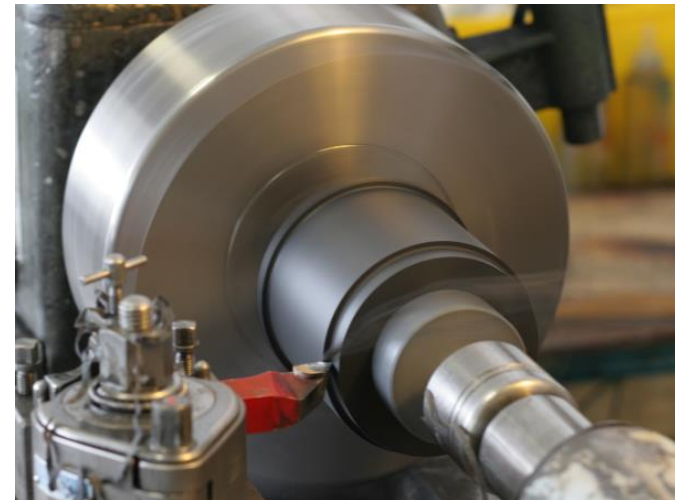
Series: **TEF-MAG™**

## **CORROSION RESISTANT DESIGN**

All wetted components are completely non-metallic.

Pump housings and gears are made of engineered fluoropolymers with excellent corrosion resistance and strength over a broad range of chemicals and temperatures.

No need for expensive high alloys prone to corrosion damage.



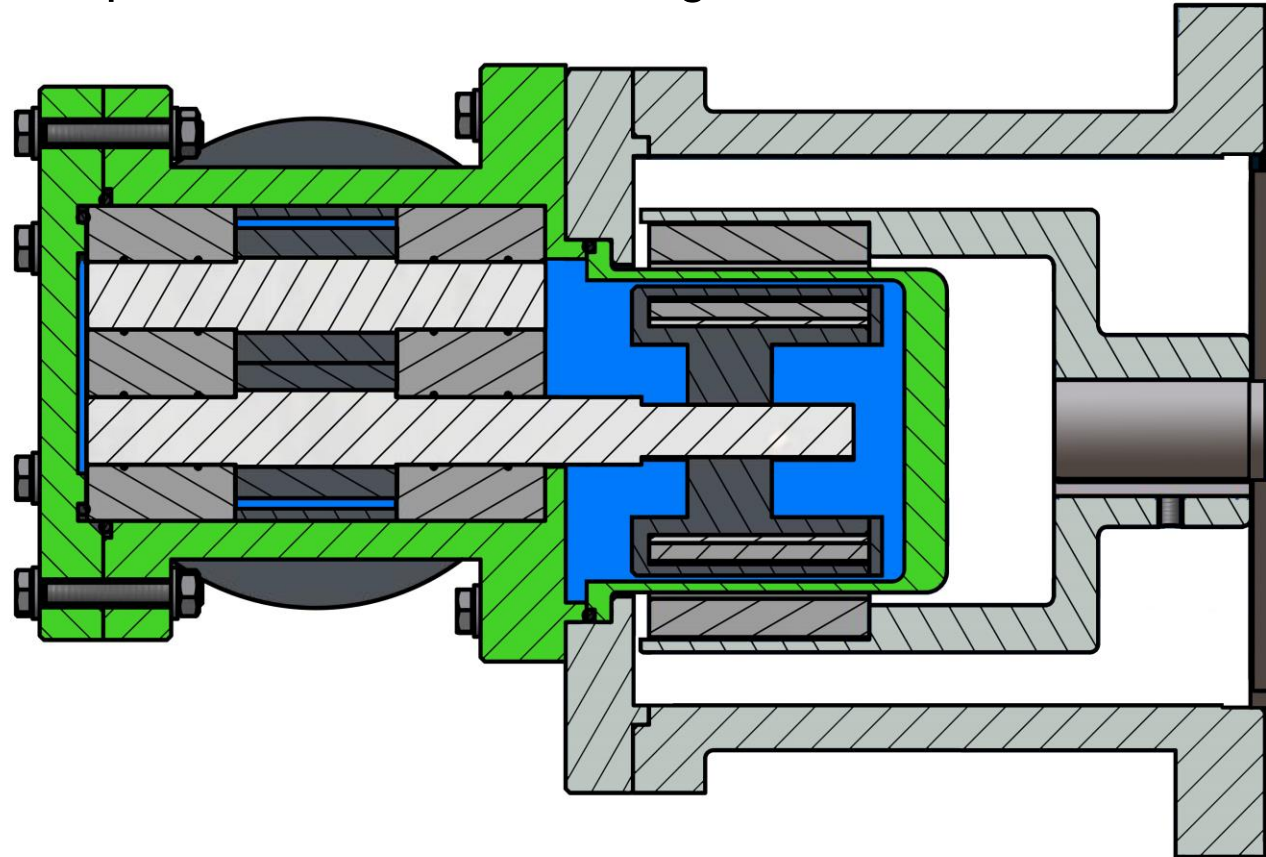
Series: **TEF-MAG™**

## **LEAK-FREE, MAGNETIC COUPLED**

**TEF-MAG™** Series pumps are magnetic driven, meaning there is no mechanical seal with contacting seal faces that are prone to wear and leakage.

Zero leakage, no emissions of hazardous or regulated chemicals.

A non-metallic containment can eliminate energy loss and heat rise due to Eddy Current losses common in metallic pumps.



# Series: **TEF-MAG™**

## **APPLICATIONS**

**TEF-MAG™** Series pumps are built for use in the harshest industrial environments. Designed to be structurally rugged with corrosion-resistant materials, the **TEF-MAG™** is an ideal fit for many medium to highly corrosive liquids used in the chemical processing, petro- and oleochemical industries and environment engineering. Fully conductive materials are also available, for an usage in ATEX areas.



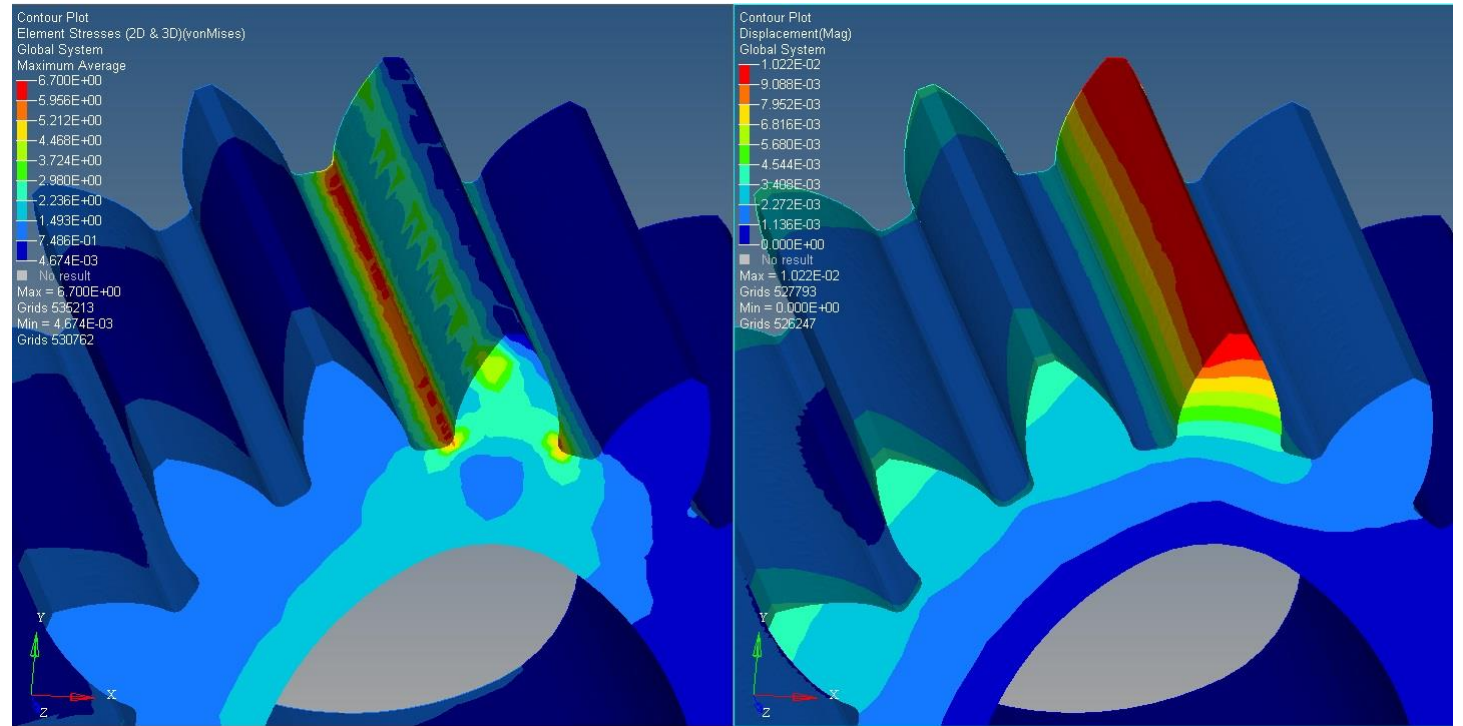
# Series: **TEF-MAG™**

## **MADE IN GERMANY**

**Development and Production**  
Made in Germany

3D CAD Construction

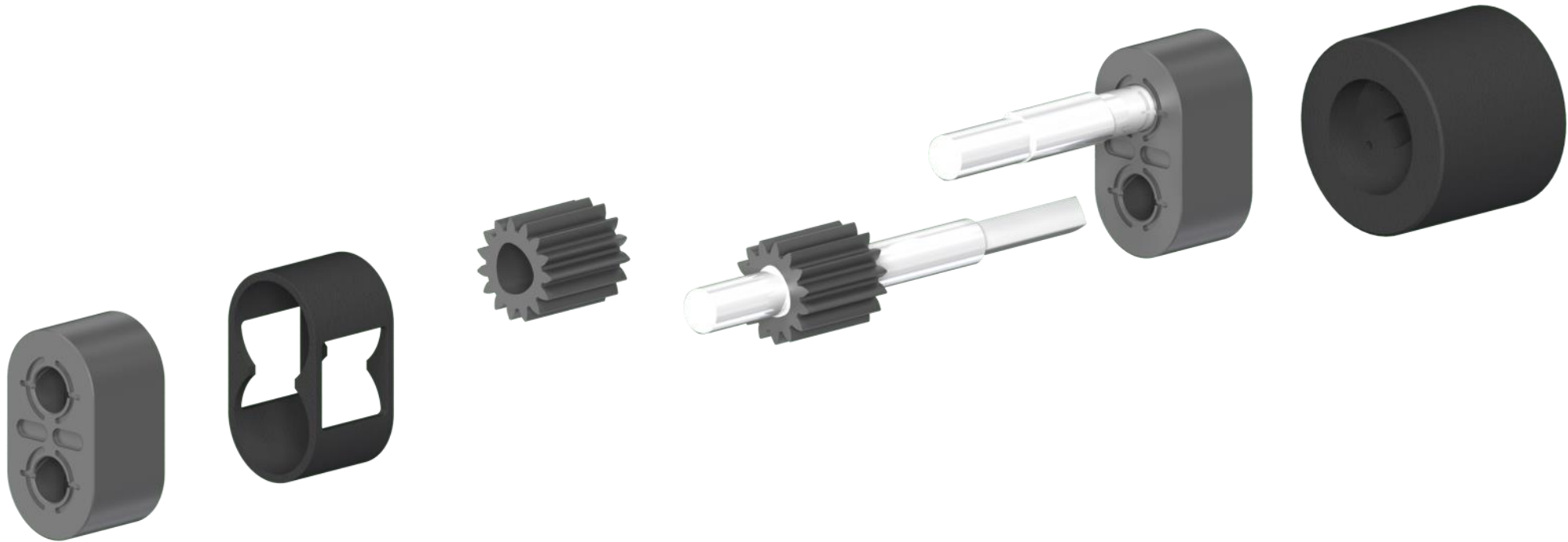
FEM and CFD Analysis for  
optimal operation



# Series: **TEF-MAG™**

## **SIMPLE DESIGN**

- 8 wetted parts only
- Assembling or maintenance requires no special tools
- Changing kit-spares take 5 minutes
- No time waste in assembling of small standard parts



Series: **TEF-MAG™**  
**PRODUCT SCOPE**

**Capacity Flow up to 4,5 m<sup>3</sup>/h**

**Drive speed regulation 1 – 60 Hz**

**10 bar differential pressure**

**16 bar maximum design pressure**

**65°C maximum liquid temperature**

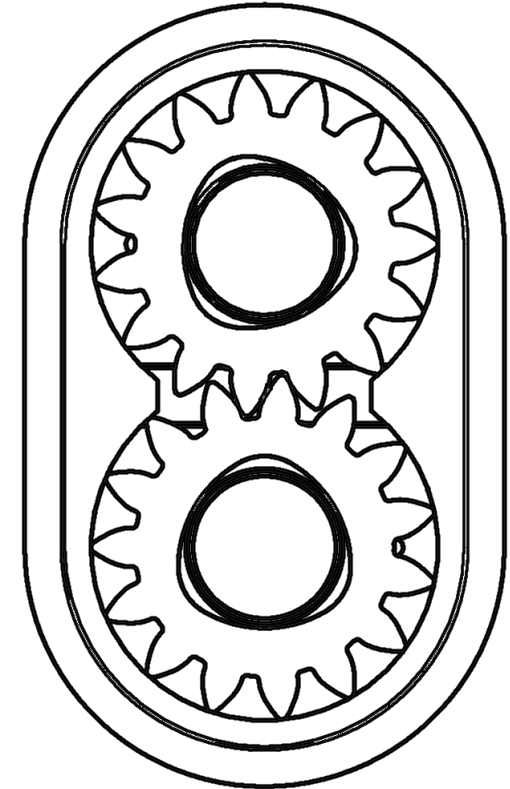
**NPSHR 0.60 m of H<sub>2</sub>O**

**Four Pump Sizes: TM100, TM200, TM1500 and TM 3500**

**Nearby Pulseless Flow**

**Up to 10 Minutes Dry Run Capabilities**

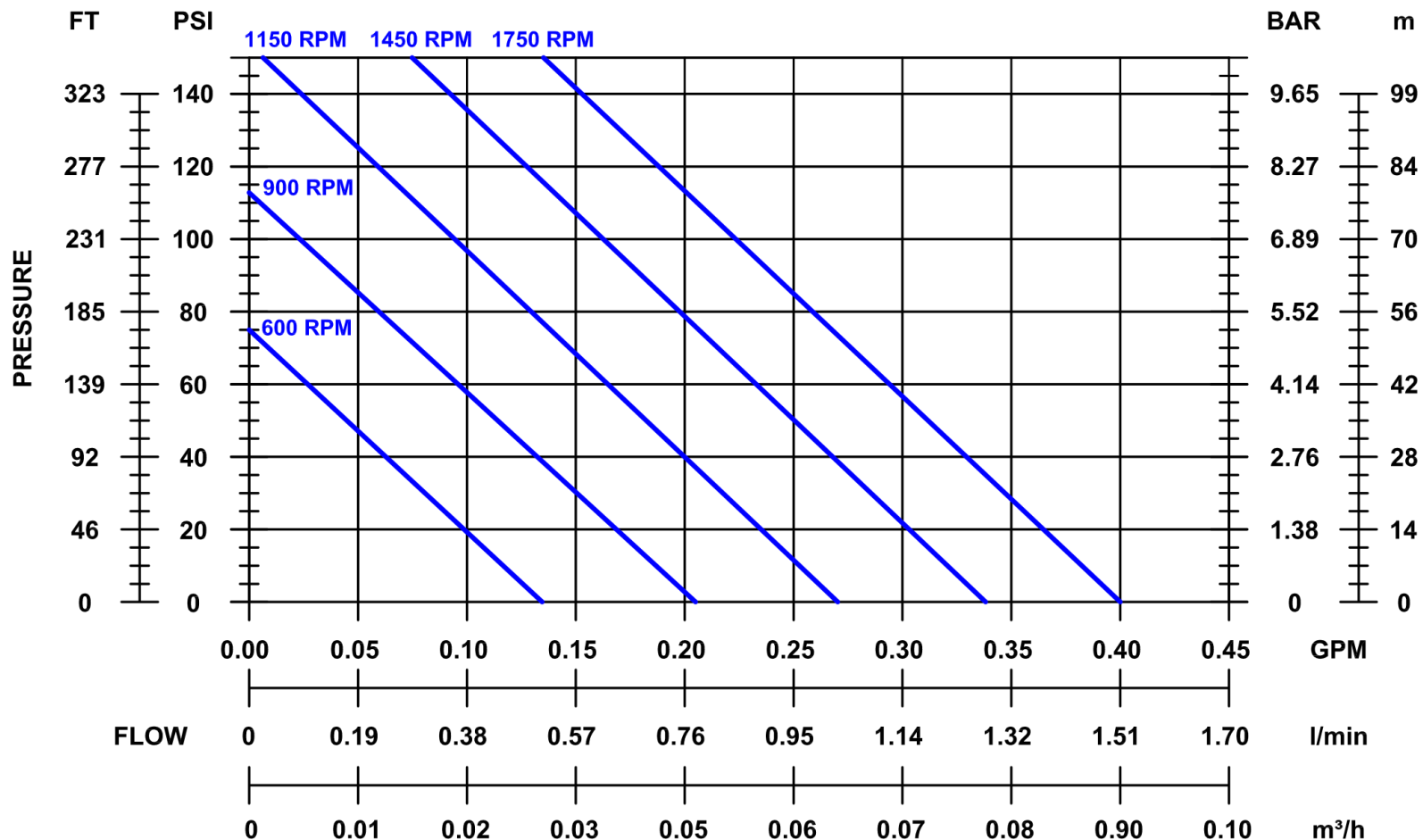
**ATEX Version available (Ex II2G cbk T60°C)**



# Series: TEF-MAG™

## PERFORMANCE CURVES TEF-MAG 100

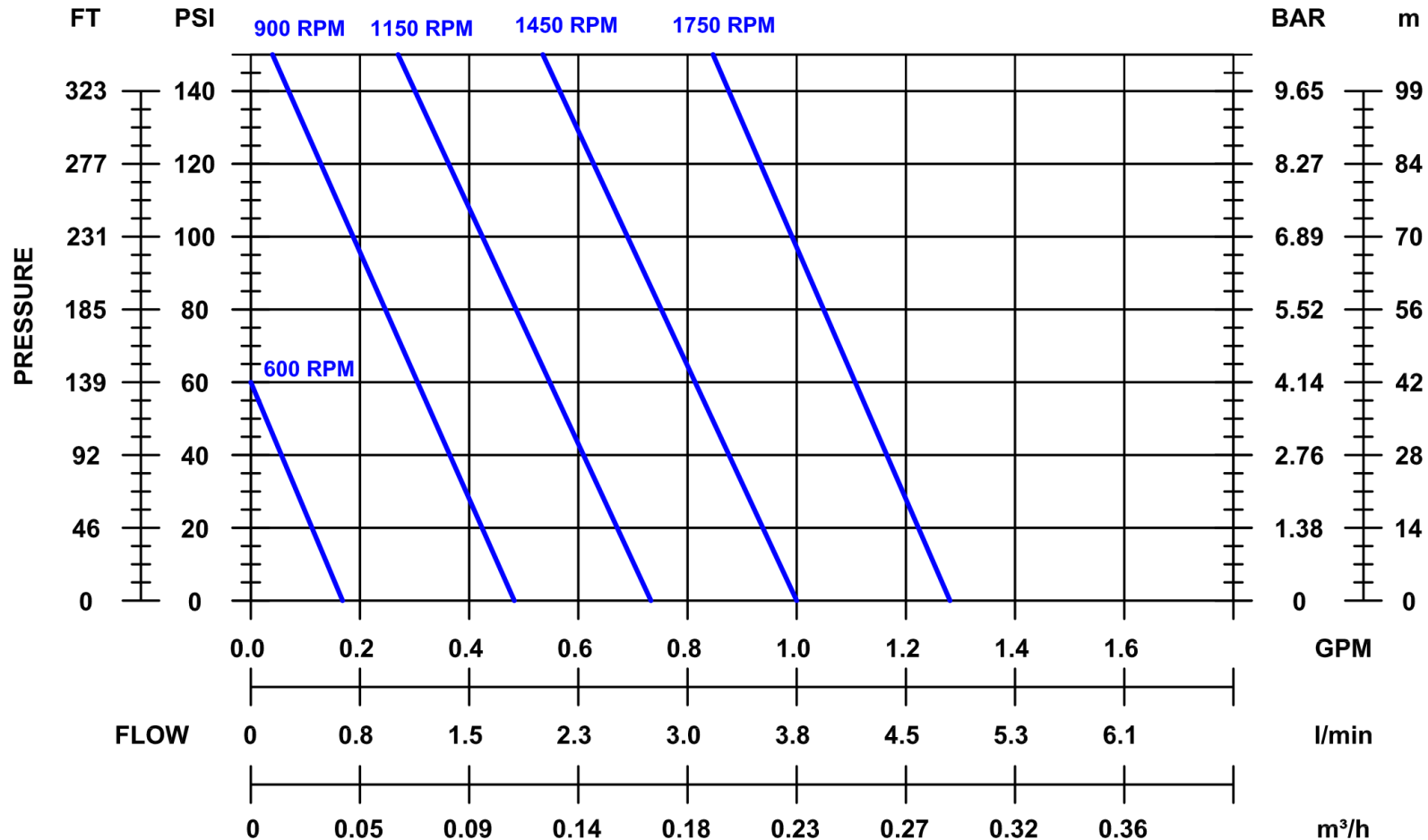
FLUID VISCOSITY: 1 CPS



# Series: TEF-MAG™

## PERFORMANCE CURVES TEF-MAG 200

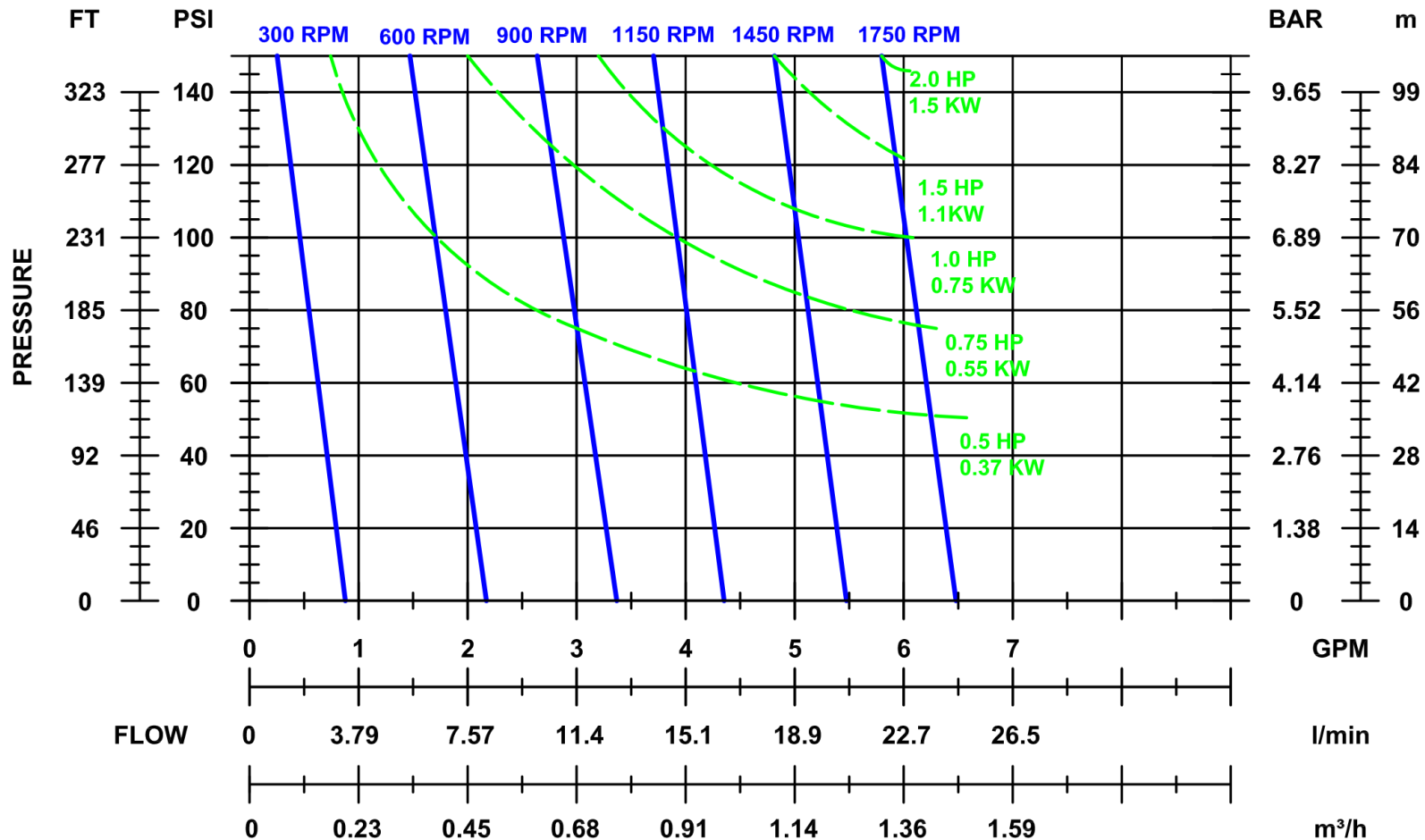
FLUID VISCOSITY: 1 CPS



# Series: TEF-MAG™

## PERFORMANCE CURVES TEF-MAG 1500

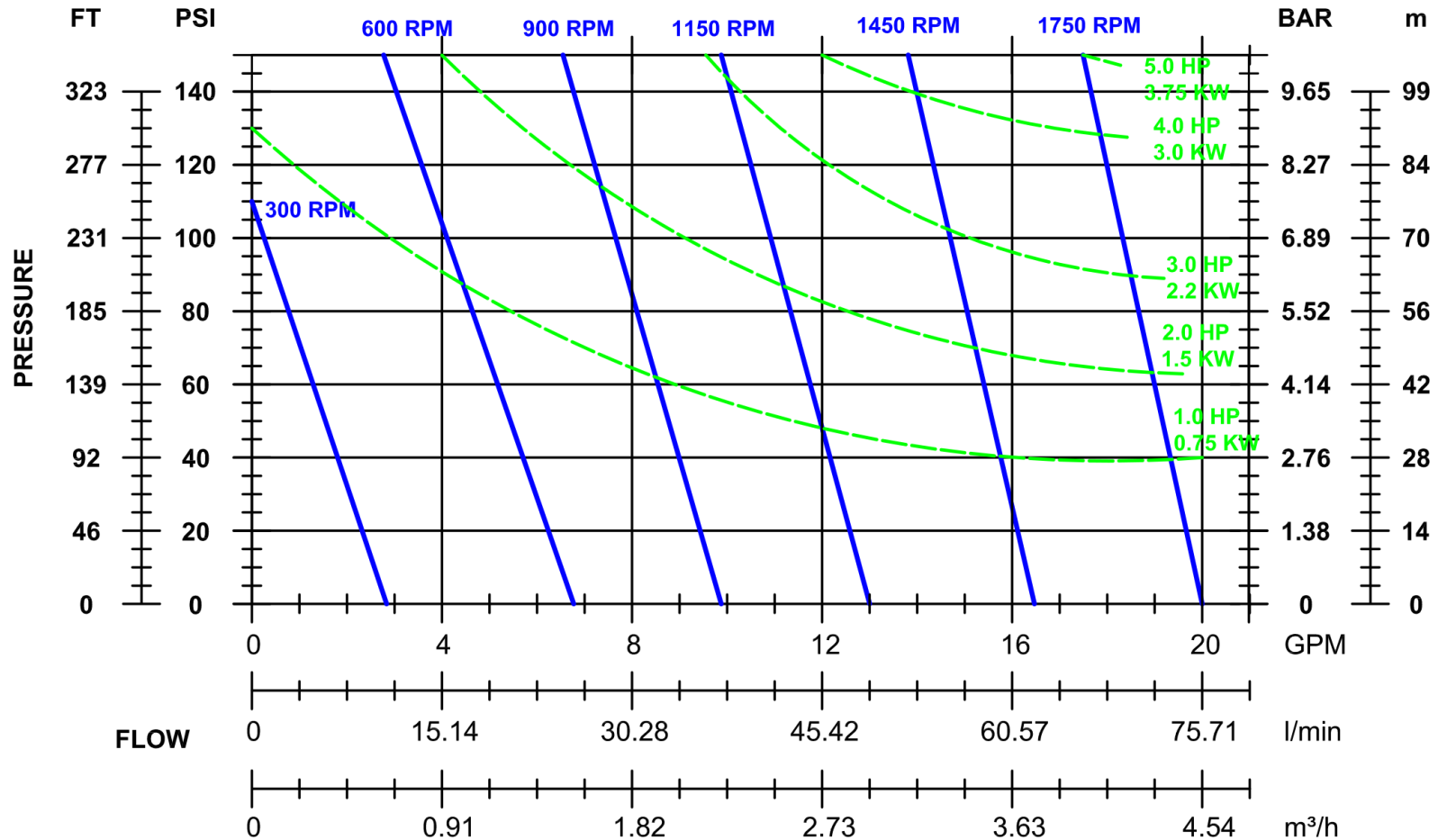
FLUID VISCOSITY: 1 CPS



# Series: TEF-MAG™

## PERFORMANCE CURVES TEF-MAG 3500

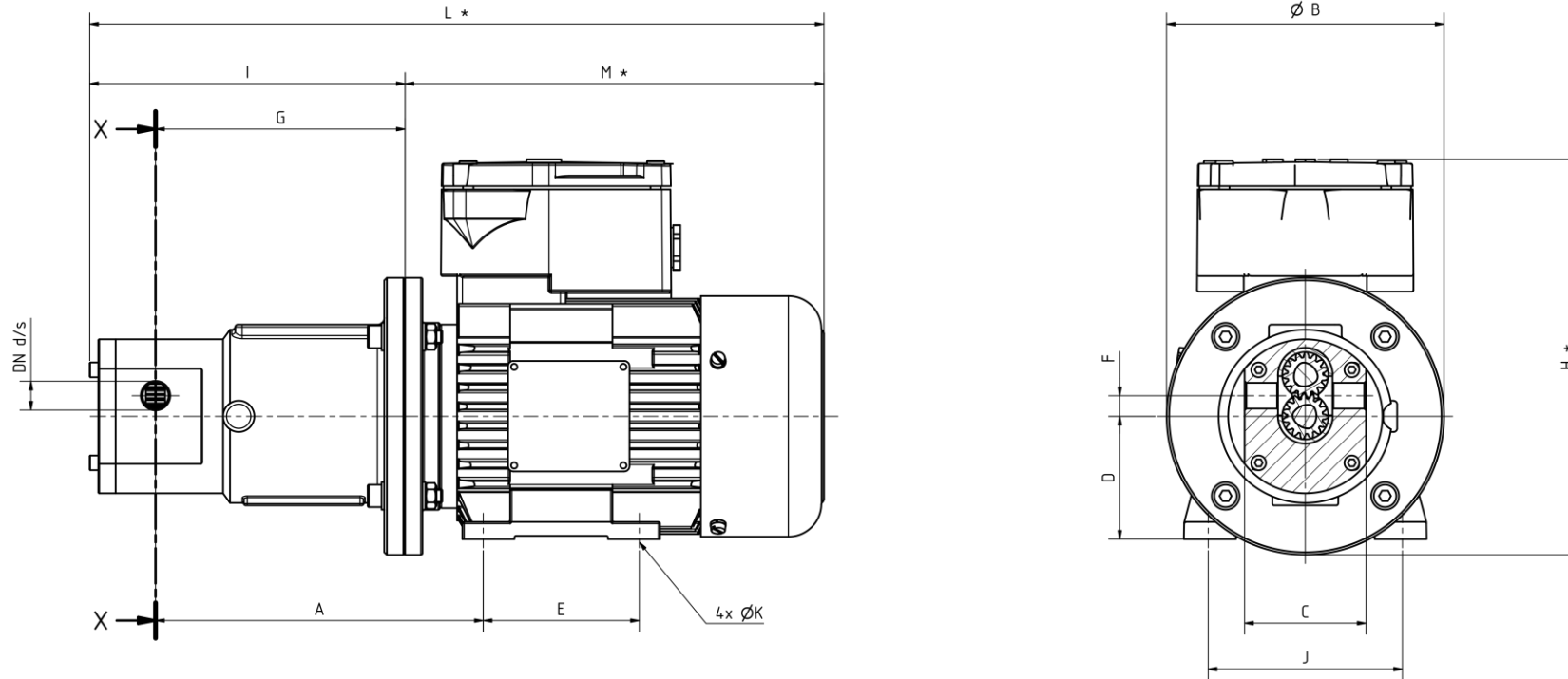
FLUID VISCOSITY: 1 CPS



...ADVANCED SOLUTIONS...

# Series: TEF-MAG™

## DIMENSIONS TEF-MAG 100 & 200

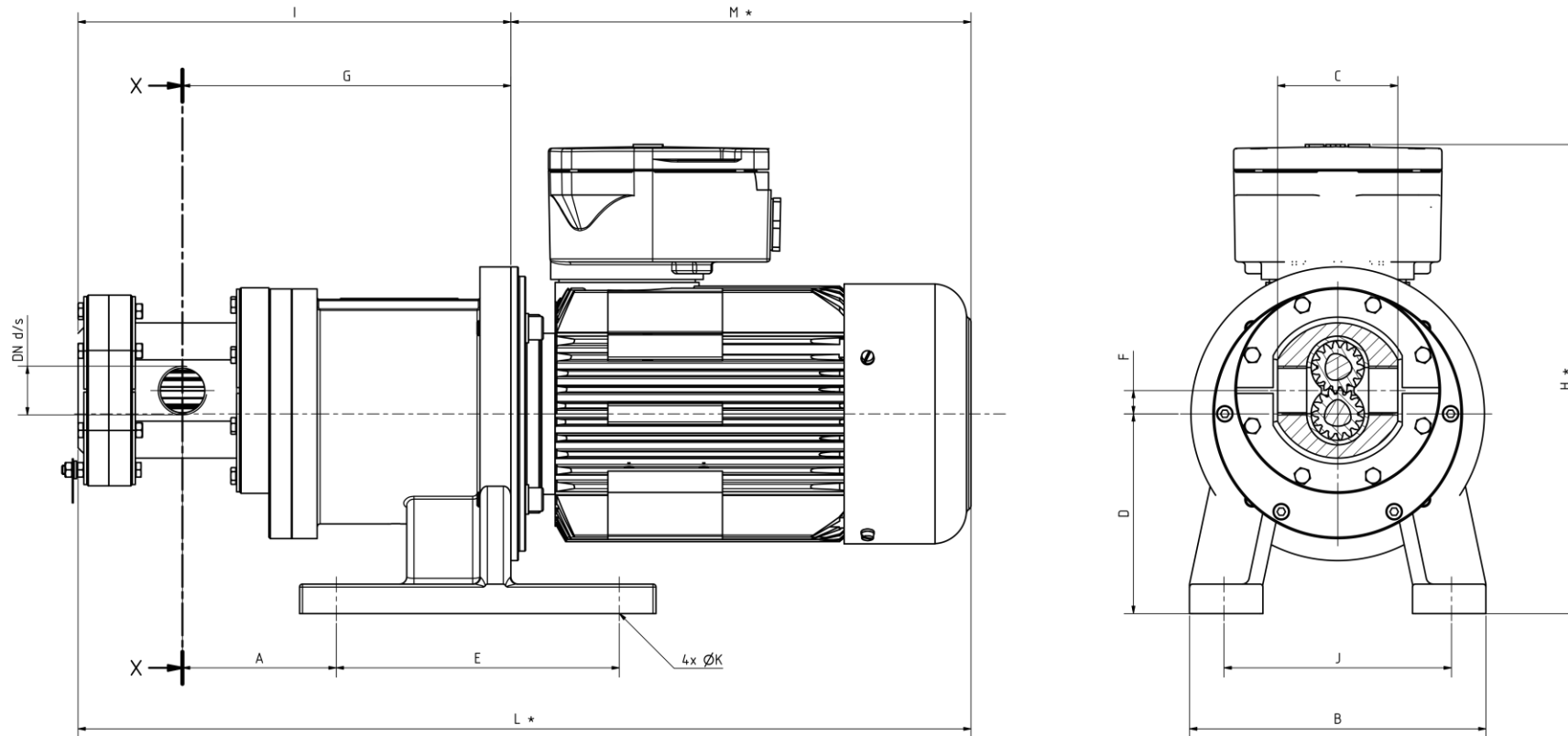


	L *	B	H *	DN d/s	A	C	D	E	F	G	I	J	K	M *
TEF-MAG 100	400,5	Ø 160	228,5	G1/4"	180	70	71	90	3,4	135	159	112	Ø 9	241,5
TEF-MAG 200	423,5	Ø 160	228,5	G3/8"	189	70	71	90	11,9	144	182	112	Ø 9	241,5

\* Dimensions may change with different Motor manufacturers

# Series: TEF-MAG™

## DIMENSIONS TEF-MAG 1500 & 3500



	L *	B	H *	DN d/s	A	C	D	E	F	G	I	J	K	M *
TEF-MAG 1500	608,75	202	319,5	G1"	104,8	82	136	193	15,9	223,9	295	155	Ø 12	314
TEF-MAG 3500	675	254	340	DN32/40 PN10	76,1	254	136,5	158,8	23,8	266,7	375	215,9	Ø 10,5	335

\* Dimensions may change with different Motor manufacturers

Series: **TEF-MAG™**

## **AVAILABLE MATERIALS**

- Housings: Conductive PVDF-FCR, PP-GFR, Stainless Steel
- Gears: PTFE, PTFEC
- Shafts: Alumina ceramic 99,5%, SSiC
- Bearings: Carbon Graphite, PTFEC, PTFE, SSiC
- Magnets: NdFeB
- O-Rings: NBR, EPDM, FKM, FFKM

Custom made pumps or materials are available upon request, please ask our technical staff. Contact: [konstruktion@march-pumpen.com](mailto:konstruktion@march-pumpen.com)

# MARCH PUMPEN GmbH & Co. KG

Rathenaustraße 2 • D-35394 Gießen

Tel.: +49(0) 641 - 68 68 06 - 0 • Fax: +49(0) 641 - 68 68 06-60

[www.march-pumpen.com](http://www.march-pumpen.com) • [info@march-pumpen.com](mailto:info@march-pumpen.com)

