

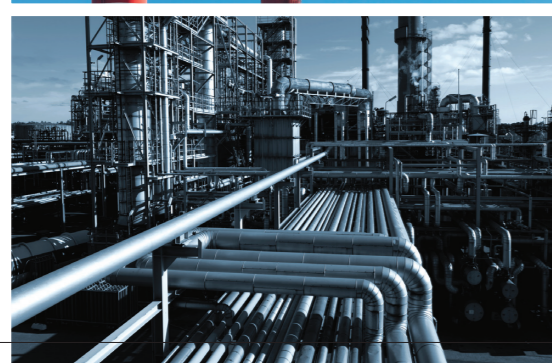
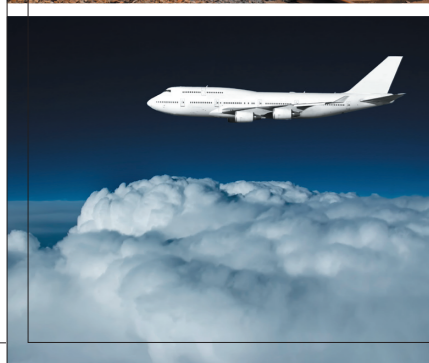
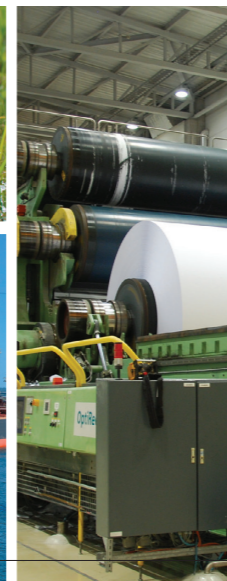
Company profile

Sun Yeh Electrical Ind. Co., Ltd. was established in 1986 and it is committed to technical excellence, continuous innovation, and the most advanced quality management and service in the products and organization.

We continue to develop and expand our product range to include quarter-turn actuators, spring return fail-safe actuators, linear actuators, and the actuators with explosion-proof design, which have won patent in several countries. Sun Yeh offers various products widely applied to the control on industry, water treatment, air conditioning, chemical engineering, food industry, and etc.

Sun Yeh is dedicated to serving you with high-quality product which have been certified with CE, CSA, CCC, CU-TR, ATEX, IECEX, CNEX approvals and meet RoHs and REACH environmental regulations, in addition to ISO 9001, ISO14001, OHSAS 18001, and AEO.

「Perfect solution」



Explosion-Proof Actuator

Service Unique Nice Youthful Energy Honesty
SUNYEH

SUN YEH ELECTRICAL IND. CO., LTD.

No.68, Ln. 854, Sec. 1, Shatian Rd., Shejiau Vil., Dadu Dist.,
 Taichung City 432, Taiwan (R.O.C.)
 Tel: +886-4-26985666 Fax: +886-4-26983668
 E-mail: service@sunyeh.com

www.sunyeh.com



AG Design 14-12/2011/109



Service Unique Nice Youthful Energy Honesty
SUNYEH



Spring Return Fail-safe Electric Actuators



Product Overview

Sun Yeh electric spring return fail-safe actuators in addition to the normal function (floating control, on-off control, modulating control) are designed to provide fail-safe positioning of valves and dampers upon loss of supply voltage. A mechanical spring set is utilized to position the controlled device to either the fully OPEN or fully CLOSED position without any external power source. For ON-OFF type, a mechanical BUFFER employed at the end of the spring stroke in order to reduce the dynamic effects of the spring return system. A clutch-less and lever-less manual override is optional for standard units to provide full-time manual positioning of the controlled device. This design has already won the new Patent in Taiwan, U.S.A., Japan and Mainland China.

Product Features

- Controls : proportional, floating and ON-OFF.
- Clutch-less manual override (optional).
- Dry-powder coated aluminum alloy enclosure conforms to NEMA 4X, 5 & IP 67 outdoor use.
- ISO 5211 mounting flange.
- Domed position indicator.
- Built-in thermal protection prevents motor burnout.
- Self-locking drive system.

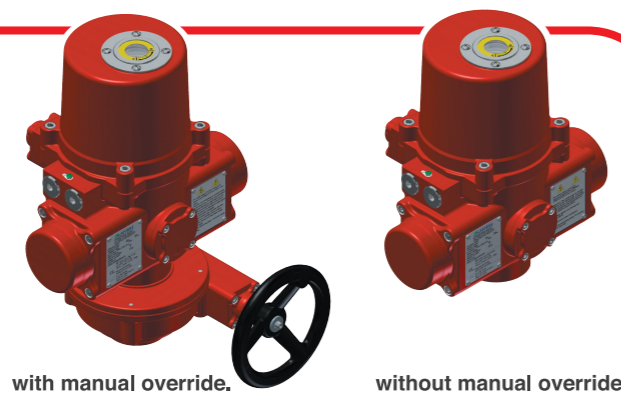
Standard Specification

Model	Torque		Nominal Motor Power	Weight				Mounting Base				
	Nm	in.-lbs		Standard		w / Manual override		Mounting Flange	Shaft		Depth of Shaft	
				w	kg	lbs	kg		lbs	ISO 5211	mm	inch
S500	50	445	50	27	60	37	82	F07	17	0.67	30	1.18
S1300	130	1150	130	57	126	74	163	F10	22	0.87	40	1.57
S2000	200	1770	130	95	209	135	298	F12	27	1.06	45	1.77
S2600	260	2300	130	95	209	135	298	F12	27	1.06	45	1.77

• Note : Motor power is based on 110V AC at 60Hz.

Explosion-proof Enclosure

The explosion-proof spring return fail safe actuator is structured as flame-proof and combustible dust-proof. It is a control device for valves or dampers and can be used in the places, where is classified as Zone 1 or Zone 2, contained Group II A and Group II B gases, Zone 21 or Zone 22, contained the combustible dust atmosphere or the mixture circumstance with the explosive gas atmospheres and the combustible dust atmospheres. Temperature group T1 ~ T4.



with manual override.

without manual override.

European Hazardous Area Directive-ATEX

Directive	Group	Ambient Temperature
ATEX II 2 GD	Ex db IIB T4 Gb	-30°C ~ +70°C (-22°F ~ +158°F)
ATEX II 2 GD	Ex tb IIIC T130°C Db	-30°C ~ +70°C (-22°F ~ +158°F)

International Hazardous Area-IECEX

Group	Ambient Temperature
Ex db IIB T4 Gb	-30°C ~ +70°C (-22°F ~ +158°F)
Ex tb IIIC T130°C Db	-30°C ~ +70°C (-22°F ~ +158°F)

Linear Electric Actuators



Product Overview

The linear valve electric actuators provide with thrust ranges from 250 to 2,000 kgf (551 ~ 4,409 lbf). All models are equipped with modulating controllers and suitable for globe valves, gate valves and linear travel devices. It can be applied to HVAC and industrial use, especially for the steam and high temperature employments.

Product Features

- Self-locking drive system.
- DC motor equipped.
- External stem position indicator.
- Low-power consumption.
- Dry-powder coated aluminum alloy enclosure conforms to NEMA 4X, 5 & IP 67 outdoor use.
- Manual operation can be applied in case of power outage.
- Built-in thermal protection prevents motor burnout.

Standard Specification

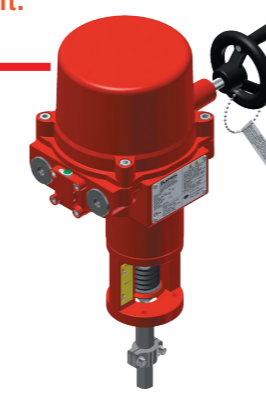
Model	Thrust			Weight		Nominal Motor Power	Mounting Flange	Max. Stroke			
	kgf	lbf	N	kg	lbs			w	ISO 5211	mm	
										mm	inch
L250	250	550	2450	8.5	19	8	F07	50	1.97		
L500	500	1100	4900	8.5	19	8	F07	50	1.97		
L1000	1000	2205	9805	27	60	25	F10	100	3.94		
L2000	2000	4410	19615	27	60	35	F10	100	3.94		

• Note : Motor power is based on 110V AC at 60Hz.

CAUTION : Do not conduct the stroke or thrust test before mounting with the valve or setting the thrust limit.

Explosion-proof Enclosure

The explosion-proof linear valve actuator is structured as flame-proof and combustible dust-proof. It is a control device for valves and can be used in the places, where is classified as Zone 1 or Zone 2, contained Group II A and Group II B gases, Zone 21 or Zone 22, contained the combustible dust atmosphere or the mixture circumstance with the explosive gas atmospheres and the combustible dust atmospheres. Temperature group T1 ~ T4.



European Hazardous Area Directive-ATEX

Directive	Group	Ambient Temperature
ATEX II 2 GD	Ex db IIB T4 Gb	-30°C ~ +70°C (-22°F ~ +158°F)
ATEX II 2 GD	Ex tb IIIC T130°C Db	-30°C ~ +70°C (-22°F ~ +158°F)

International Hazardous Area-IECEX

Group	Ambient Temperature
Ex db IIB T4 Gb	-30°C ~ +70°C (-22°F ~ +158°F)
Ex tb IIIC T130°C Db	-30°C ~ +70°C (-22°F ~ +158°F)

Quarter Turn Electric Actuators



Product Overview

OM series electric actuators offer torque ranges from 6 Nm to 4,500 Nm. The actuator comes standard with NEMA 4X & IP 67 environmental rating. All Models are ISO 5211 compliant and equipped with a visual position indicator. The manual override can be operated without clutch and brake under our research and development. It has already won patent in Taiwan, Mainland China, and USA.

Standard Specification

Model	Torque		Weight		Nominal Motor Power	Speed	Manual override	Mounting Flange		
	Nm	in.-lbs	kg	lbs					w	(sec / 90°)
T6	6	55	1.5	3.3	5	8		F03 / F05		
T15	15	130	1.5	3.3	5	19	Lever	F03 / F05		
OM-A	50	445	3	6.6	10	20	N / A	F05 / F07		
OM-A-M	50	445	3	6.6	10	20	Lever	F05 / F07		
OM-1	35	310	2	4.4	10	12		F03 / F05		
BM-2	120	1065	5.5	12.1	40	8	N / A	F07		
OM-F	65	575	11	25	60	6		F07		
OM-2	90	800	11	25	40	15		F07		
OM-G	120	1065	11	25	60	8		F07		
OM-3	150	1330	11	25	40	22		F07		
OM-H	300	2655	17	38	60	23		F07 / F10		
OM-4	400	3540	20	45	80	16		F10		
OM-5	500	4430	20	45	80	22		F10		
OM-6	650	5755	20	45	80	28	Hand-wheel	F10		
OM-7	1000	8855	32	71	120	46		F12 or F14		
OM-8	1500	13280	32	71	120	46		F12 or F14		
OM-9	2000	17710	71	157	180	58		F14 or F16		
OM-10	2500	22140	71	157	180	58		F14 or F16		
OM-11	3000	26565	72	159	180	58		F14 or F16		
OM-12	3500	31000	72	159	220	58		F14 or F16		
OM-13	4500	40000	106	234	220	80		F16 / F25		

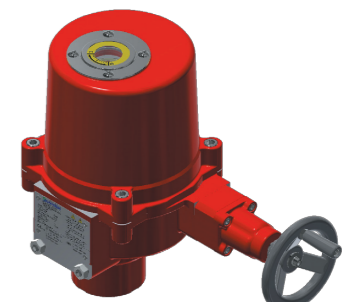
• Motor power and speed are based on 110V AC at 60Hz.

Product Features

- Self-locking gear system.
- Clutch-less manual override.
- Dry-powder coated aluminum alloy enclosure conforms to NEMA 4X, 5 & IP 67 outdoor use.
- ISO 5211 mounting flange.
- Mechanical stops.
- Domed position indicator.
- Built-in thermal protection prevents motor burnout.

Explosion-proof Enclosure

The explosion-proof linear valve actuator is structured as flame-proof and combustible dust-proof. It is a control device for valves and can be used in the places, where is classified as Zone 1 or Zone 2, contained Group II A and Group II B gases, Zone 21 or Zone 22, contained the combustible dust atmosphere or the mixture circumstance with the explosive gas atmospheres and the combustible dust atmospheres. Temperature group T1 ~ T4.



European Hazardous Area Directive-ATEX

Directive	Group	Ambient Temperature
ATEX II 2 GD	Ex db IIB T4 Gb	-30°C ~ +70°C (-22°F ~ +158°F)
ATEX II 2 GD	Ex tb IIIC T130°C Db	-30°C ~ +70°C (-22°F ~ +158°F)

International Hazardous Area-IECEX

Group	Ambient Temperature
Ex db IIB T4 Gb	-30°C ~ +70°C (-22°F ~ +158°F)
Ex tb IIIC T130°C Db	-30°C ~ +70°C (-22°F ~ +158°F)