

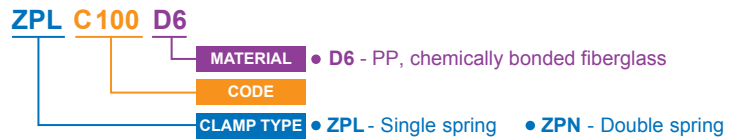
SWIVEL NOZZLE SPRING PIPE CLAMPS

ZPL/ZPN pipe clamps are specially designed for swivel ball nozzles. Drill a hole and fix the clamp with one screw. Body is made of fibreglass reinforced PP, screw and spring SUS316. ZPL/ZPN swivel nozzles work under high temperature and high degree of intensity. ZPL/ZPN swivel nozzle pipe clamps are widely used in surface pre-treatment.

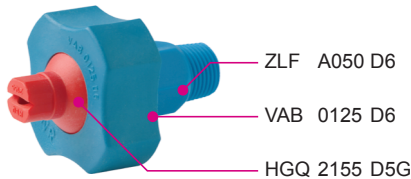
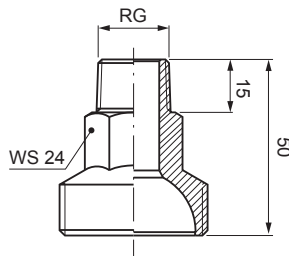
- Typical application: Cleaning equipment used in pre-treatment for coating process
- Max working temperature: **LT** 80°C
- Max working pressure: ZPL Single spring 2 bar
ZPN Double spring 3 bar
- Materials: Body **D6** PP, chemically bonded fiberglass
Spring **N1** AISI 302 Stainless steel, heat treated
O-ring **E8** NBR

Code		PS	PD	D	A	W
Single spring	Double spring	inch	mm	mm	deg	g
ZPL C100 D6	ZPN C100 D6	1"	32/34	14.0	40°	
ZPL A125 D6	ZPN A125 D6	1 1/4"	41/43	20.0	40°	
ZPL B125 D6	ZPN B125 D6			17.0		
ZPL C125 D6	ZPN C125 D6			14.0		46/65
ZPL A150 D6	ZPN A150 D6	1 1/2"	46/49	20.0	40°	
ZPL B150 D6	ZPN B150 D6			17.0		
ZPL C150 D6	ZPN C150 D6			14.0		

HOW TO MAKE UP THE PRODUCT CODE EX.: ZPL C100 D6



ZLF (SWIVEL NOZZLE THREADED NIPPLE)

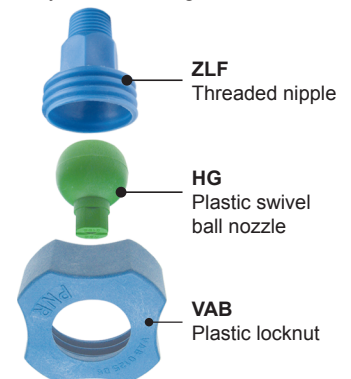


SWIVEL NOZZLE THREADED NIPPLE

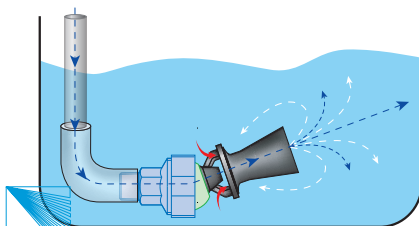
ZLF series threaded nipples offer another convenient type of installation for swivel ball nozzles. They are made of fibreglass reinforced PP. ZLF series work under high temperature and high degree of intensity. ZLF threaded nipples are widely used in surface pre-treatment.

- Typical application: Cleaning equipment used in pre-treatment for coating process
- Max working temperature: **LT** 80°C
- Max working pressure: **LP** 4 bar
- Material: **D6** PP, chemically bonded fiberglass

Code	RG inch BSPT	RG inch NPT	W g
ZLF A038 D6	3/8"	-	15
ZLF B038 D6	-	3/8"	
ZLF A050 D6	1/2"	-	
ZLF B050 D6	-	1/2"	



HOW TO MAKE UP THE PRODUCT CODE EX.: ZLF A038 D6



ZLF threaded nipples offer the best mixing effect and are often used in combination with UPB mixing eductors.