



XUM VQM3 B3



XUM VQF6 B3

HOT WATER SPRAY GUN ACCESSORIES

FLEXIBLE HOSE

This hose has been selected to be used with all models of UMV hot water spray-gun as it's made in top quality EPDM to outwear oil, high temperatures, high pressures and assure a long service life. Inlet and outlet ends are provided with female quick couplings for easy assembly and safety.

- Max working temperature **LT** 160°C
- Max working pressure **LP** 8 bar
- Materials Hose **E0** EPDM
Couplings **B3** AISI 316 Stainless steel

| Code | Size (inch) | Hose length (m) |
|-------------|-------------|-----------------|
| XUM VT25 E0 | 1/2" | 25 |
| XUM VT20 E0 | 3/4" | 20 |

QUICK COUPLINGS

XUM quick couplings are hot water spray gun accessories. It is convenient to assemble nozzle and spray gun. Please refer to below table for model no.

- Material **B3** AISI 316 Stainless steel

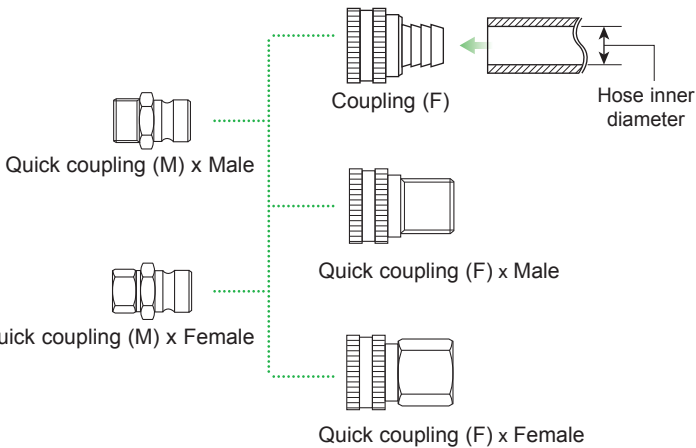
| Code | Quick coupling tipo | Thread inch | Diameter mm |
|--------------|---------------------|-------------|-------------|
| XUM VQF1 B3 | Female | 1/2" M | |
| XUM VQF2 B3 | Female | 1/2" F | |
| XUM VQF3 B3 | Female | 3/4" M | |
| XUM VQF4 B3 | Female | 3/4" F | |
| XUM VQF5 B3* | Female | | 13 |
| XUM VQF6 B3* | Female | | 19 |
| XUM VQM1 B3 | Male | 1/2" M | |
| XUM VQM2 B3 | Male | 1/2" F | |
| XUM VQM3 B3 | Male | 3/4" M | |
| XUM VQM4 B3 | Male | 3/4" F | |

* These couplings have a hose shank with the shown dia size.

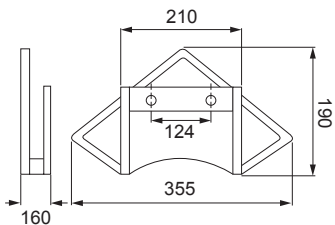
HOSE STAND

XUM quick couplings are hot water spray gun accessories. It is convenient to assemble nozzle and spray gun. Please refer to below table for model no.

- Material **B2** AISI 304 Stainless steel



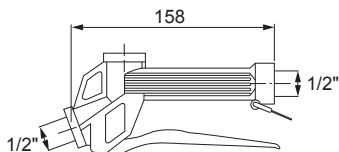
XUM US10 B2



UMS (PORTABLE WATER GUN)



with flat fan nozzle



with lance



with UEA 0525 E31 air nozzle

PORTABLE WATER SPRAY GUN

UMS portable water spray-guns are widely used in industry. They have a lock ring to fix the handle while operating for a comfortable long use. The gun has a 1/2" female thread for nozzles assembly. The most common applications of this spray-gun are:

- (1) Blowing off of water and surface dust with a UEA 0525 E31 air nozzles
- (2) Parts and environment cleaning with suitable flat fan nozzles
- (3) Liquid filling or packing with proper complementary accessories

- Typical applications Product cleaning
Liquid addition
Air spray gun
- Inlet / Outlet thread size 1/2" BSP
- Max working temperature **LT** 100°C
- Max working pressure **LP** 50 bar
- Max capacity **LQ** 70 l/min
- Weight **W** 0.17 / 0.25 kg
- Materials Inner parts **B1** AISI 303 Stainless steel
Inside seal **E7** Viton
Outside shell **E3** Acetalic resin