



EMEC
LIQUID CONTROL SYSTEMS





EMEC. THERE'S A
WHOLE WORLD WITHIN.

MEX/TENTA MKP
0.68 μ F K X2
275VAC 40/100/21
EN 132400 CE 250VAC

TC MEX/TENTA MKP
0.68 μ F K X2
275VAC 40/100/21
EN 132400 CE 250VAC

TC MEX/TENTA MKP
0.68 μ F K X2
275VAC 40/100/21
EN 132400 CE 250VAC





» Designing and developing chemical metering and dosing equipment since 1982.

EMEC products are designed with the passion and commitment that comes with years of investment in technology and human resources, resulting in the delivery of reliable and constantly updated products. Our core range features:

- dosing pumps
- integrated control and dosing systems
- control instruments
- probes
- accessories and spares

EVERYTHING UNDER CONTROL

Our commitment to excellence is just one aspect of our success. What sets us apart, on a practical level, is complete control over every aspect of production:

- design and development
- mechanical component machining
- circuit board production
- software programming
- chemical testing
- panel machining
- product assembly
- onsite testing
- spares warehousing
- delivery

SALES SUPPORT

Our commercial account team is among the company's value-added assets. Each member boasts a firm technical grounding and is fully briefed on all aspects of design

and production. They are crucial to informing the product upgrade and implementation process thanks to client feedback and their field experience. Our commercial account managers are a key contributor to defining marketing and development strategies.

POST SALES AND CUSTOMER SUPPORT

At EMEC we strive to establish long-term customer relationships by delivering on our support commitments, every step of the way: from identifying solutions best suited to our customers' requirements, to addressing implementation issues both large and small, from back office to product.

TRAINING

Knowledge is at the heart of our business, and we seek to pass that knowledge on to our products' end users. That is why we have set up the EMEC Training Program, featuring training courses delivered at both our company premises and those of our customers. The training is targeted at personnel entrusted with installing and maintaining our products and is delivered by experienced commercial account staff.

»» Product design. Quality built on strong foundations.

Design underpins the production process, driving each and every aspect of our work at EMEC. Our every effort is geared towards delivering a timely, accurate and effective response to our customers' requirements. The resources allocated to our design and development division reflect that: close to 10% of our company's human capital. Our in-house engineers and technicians design and develop software and hardware, as well as test hydraulic and mechanical components.

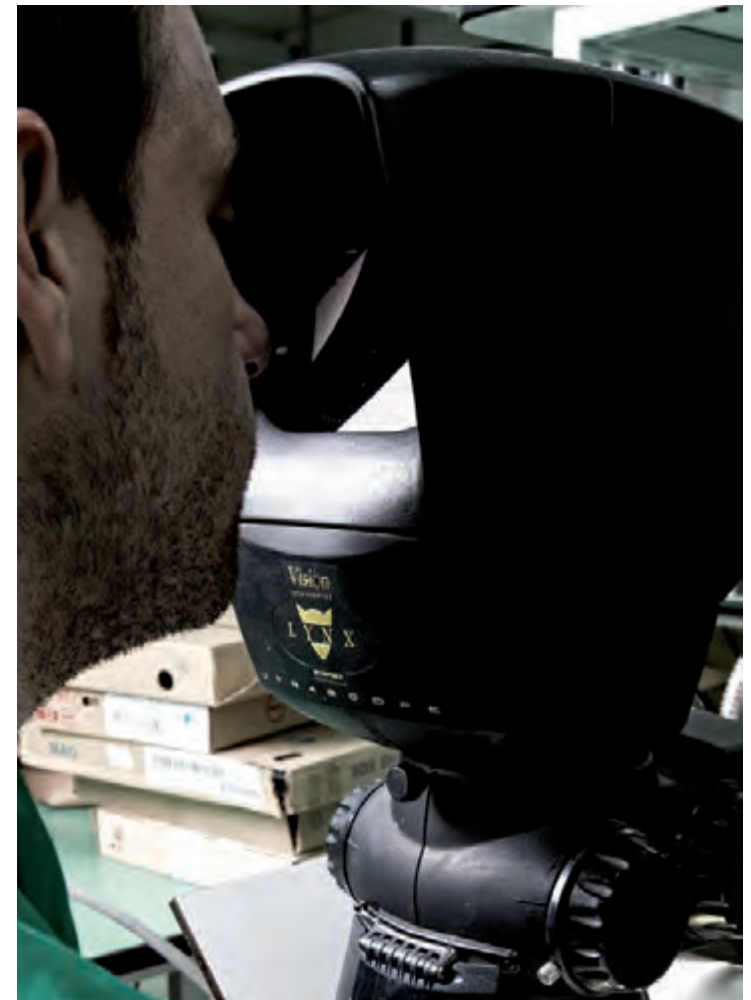
OUTSTANDING PROFESSIONALS

Our in-house professionals carry unparalleled qualifications, gained through years of experience and dedication. Our team boasts years of hand-on experience and regularly takes part in ongoing professional training, allowing us to be on top of chemical handling and industry developments. EMEC offers its clients highly trained, skilled professionals, whose proven credentials and wealth of experience are nothing less than leading-edge.

CLIENT ORIENTED FLEXIBILITY

Faced with a broad range of customer requirements, our rapid response time is a value-added part of the service we offer. Responsiveness is a direct result of EMEC's top-down commitment to handling product and systems implementation

in-house and first hand; foregoing third-party involvement. Whilst entailing higher overheads, vertically managed implementation also implies huge benefits with respect to global quality control and the ultimate reliability of our products. In our efforts to stay abreast of the market we have established a dedicated in-house media centre, tasked with showcasing products as and when they hit the market. Our media facility therefore provides clients with up-to-date information concerning aftermarket product developments, ahead of the industrial literature response time. Our pledge lies with offering clients targeted, responsive solutions.







Production. A wide array of advanced, reliable products.

The high standards to which we deliver, on a daily basis, both our services and products, comes from our uncompromising dedication to quality. Total quality is our industrial hallmark, and quality is what sets our products apart from the broader market.

WORKSHOP

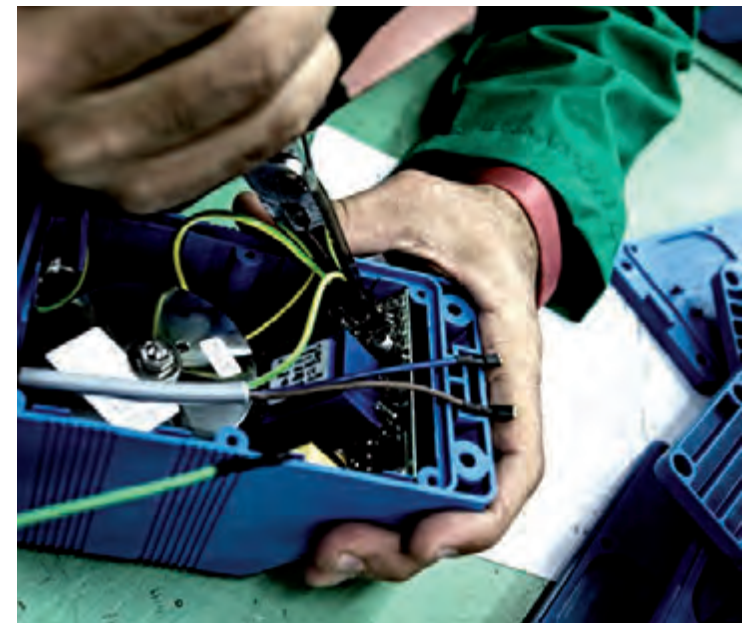
With on-site manufacturing facilities we are a notch above the competition. At EMEC we take pride in ensuring full internal control over all aspects of production. As much as it implies an onus, product reliability is our foremost pledge, one that cannot be delivered by outsourcing the production of key product components. Our workshop's capabilities are also crucial to the design stage, ensuring full control over product and systems development and customisation, offering customers a complete solution to their requirements.

ASSEMBLY

Our unparalleled experience and professional know-how also come to bear during the delicate assembly stage, where high quality components come together to form top-of-the-range products. Our components list features as many as 40,000 items: a figure which, on its own, testifies to the scale of our commitment to resources and standards.

TEST CENTER

Low quality isn't an option for us. Substandard products defy efforts to secure a market standing, generate the added burden of production recalls and inevitably compromise subsequent product placement. Our efforts to apply rigorous self-assessment standards are reflected in the quality of our products. Each and every component is subject to rigorous internal testing, with three layers of testing contributing to assembled product reliability. Such stringent standards ensure significantly inferior damage probability, heightened lifetime and optimal operation of our products.







Sales. Support with the customer in mind.

Our solid customer base is proof of our ongoing commitment to delivering reliable products to high price-quality standards. On top of that, our clients can rely on our constant support leading up to and after product purchase. Pre- and post-sales services address all of our customers' product requirements and potential customisation needs.

CUSTOMISATION

Total control over production allows us to offer clients a broad set of customisation options, ranging from individual branding and product component options, to substantial hardware and software departures from standard product specifications.

SALES NETWORK

As sales network partners you are part of the broader EMEC project, you're not just sales agents. Our sales managers boast a firm technical grounding and in-depth knowledge of the production cycle, offering client focused, practical insights into our product range. Our every effort is geared towards offering customer-led solutions, establishing full-fledged partnerships with our clients. At EMEC we exceed our role as suppliers, focusing on solving as well as preventing product issues.

SALES DESK

Our sales department's back office ensures that every aspect of product supply, from order through to delivery, runs smoothly. Any issues or problems arising during the

course of supply are dealt with in timely fashion, cutting any potential delays to a minimum. Our sales desk's efficient handling of client enquiries translates into 40% of orders being adapted during the first contact stage. EMEC has a close to zero customer-loss record.

POST-SALES ASSISTANCE

Following delivery we provide ongoing support for our products, ensuring onsite maintenance and inspection services, as well as remote support. Our Max5 system, for instance, allows us to provide Sydney-based clients with immediate software updates direct from our Rieti office via remote PC applications. We provide real-time, multi-language customer assistance during out-of-office hours.

40.000

40,000 SPECIFICATIONS, 60,000 PRODUCTS EVERY YEAR

A close-up photograph of a hand holding a black corrugated hose. The hose is connected to a clear plastic manifold. The manifold has several ports, some with white caps and others with clear plastic connectors. A white connector with a black ring is visible on the right side of the manifold. The background is a blurred industrial setting with various metal parts and machinery.

PRODUCTS THAT
REFLECT CHANGE.





» Industrial requirements are constantly changing. So are our products.

Our products' applications span several industrial sectors, and a key focus of EMEC is keeping up to speed with industry changes. The metering and dosing industry is relatively young, demanding a commitment to constant innovation and to deploying new technologies in areas both new and old. Three decades of in-the-field experience and know-how have allowed us to constantly upgrade our products, significantly expanding their functions. Some of the industries that EMEC operates in:

- industrial water treatment
- drinking water processing
- industrial water effluent processing
- chemical and mechanical water purification
- bacterial water purification
- liquid fertilisation and irrigation
- chemicals processing
- industrial food processing
- evaporation towers
- refineries
- health spas
- pools

By choosing EMEC products customers choose not only outstanding reliability but a design to fit the most detailed specifications. Our range of products meets a wide array of chemical treatment requirements, the core range featuring:

- dosing pumps
- integrated control and dosing systems
- control instruments
- probes

These categories provide a broad overview of our product range. The array of functions and purposes served by our products far exceeds the bounds of these categories.





160

**DELIVERING TEN COURSES AND TRAINING
MORE THAN 160 TECHNICIANS EVERY YEAR**

**TRAINING AND
SUPPORT.
ATTENTION TO DETAIL.**







» Qualified technicians and constantly updated skills.

At EMEC we fully understand the complexity of each industry's ever-changing challenges and that the products we develop need to be handled by qualified, trained personnel. That understanding inspired the establishment of the EMEC Training Program: a scheme built around modules, addressing topics spanning technology and chemistry. Our most senior, expert sales account managers are entrusted with providing the training. At EMEC we believe that experienced account managers can exceed their sales role and deliver value-added service to our customers.

TRAINING WITH A PURPOSE

Anyone who has taken part in our Program knows that the scope of training goes well beyond providing static learning requirements. EMEC training courses seek to target issues of practical consequence, providing insights into the workings of our products, building solution-oriented approaches.

QUALIFIED TRAINING STAFF

Our staff boasts a firm grounding in fundamental aspects of chemistry, physics and mechanics, attained through continual commitment to the field. They will not pass on their know-how in the form of abstract, academically drafted lectures which a wide variety of text books could easily make up for.

AROUND THE CLOCK

Our staff provides an alternative kind of training, a type of training that is often overlooked; over-the-phone support to our customers compounds formal training sessions. Possibly the best example of how we approach partners and clients is that our ongoing training services are delivered entirely free of charge, whether the recipients are companies, technicians or sector professionals. No aspect of training, whether tuition, course implementation or logistics, entails any cost whatsoever to participants. If feasible, training sessions may also be held at client premises.



93

**WE RECYCLE 93%
OF OUR WASTE MATERIAL**

VALUES WE BELIEVE IN:
SUSTAINABILITY
AND CERTIFICATION.

 **Net**

THE INTERNATIONAL CERTIFICATION NETWORK

CERTIFICATE

IQNet and Quality Austria

hereby certify that the organization

EMEC S.r.l.

A DONATORI DI SANGUE, 1 - 02100 - VAZIA (FR)

for following field of activities:

*of equipments (measuring pumps, analogic and digital check instruments,
uration and control in industrial production, washing plant and food, for
oil and industrial use*

EA 12

has implemented and maintains a



00011 N00500

150.602
-155.000
4.23.028
100.000
0.001

1	2	3	4	5	6	7	8	9	0
1	2	3	4	5	6	7	8	9	0
1	2	3	4	5	6	7	8	9	0
1	2	3	4	5	6	7	8	9	0

1	2	3	4	5	6	7	8	9	0
1	2	3	4	5	6	7	8	9	0
1	2	3	4	5	6	7	8	9	0
1	2	3	4	5	6	7	8	9	0

WAVE

100



A balance-oriented approach to environmental issues is not just a matter of due diligence. It is a matter of principle.

SUSTAINABLE IN PRACTICE

Respecting and safeguarding the environment are two of the core values underpinning our business. In keeping with those commitments we engage in and promote all activities designed to curb the environmental impact of our processes, products and raw materials, on a life-cycle basis. Our company implements an Environmental Management System compliant with UNI EN ISO 14001 standards, subject to ongoing updates. Our goal is to curb atmospheric emissions, rationalise water consumption and enact appropriate waste management policies, especially with reference to noxious chemicals.

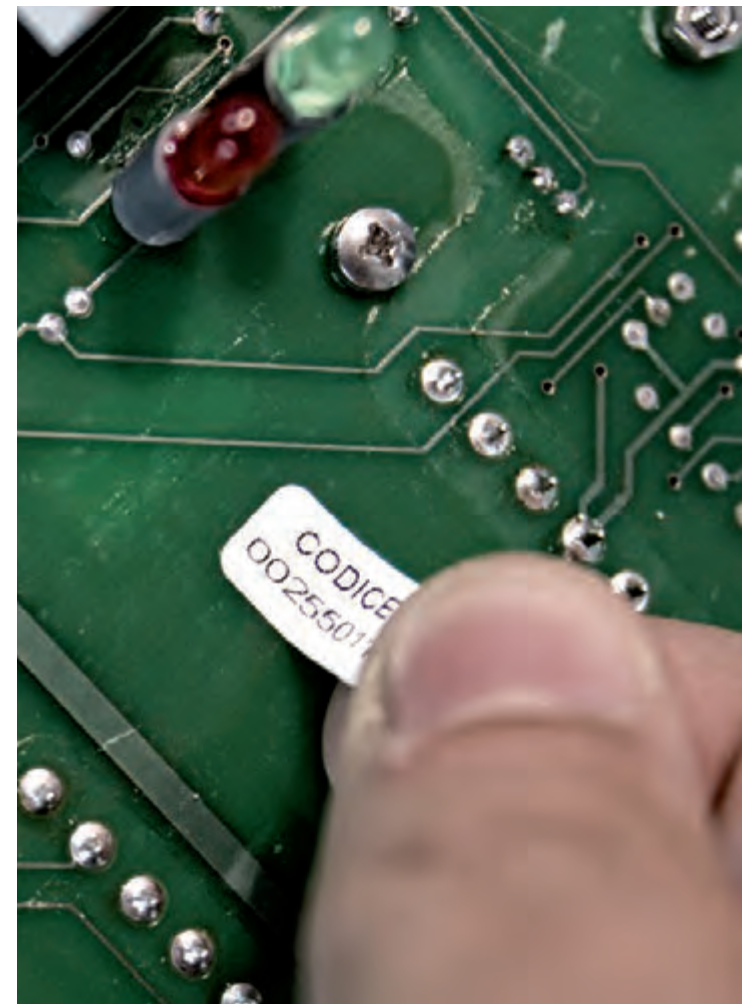
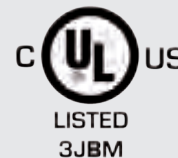
VALUE-ADDED COOPERATION

At EMEC we also deliver a commitment to reviewing emissions generated at our facilities, by monitoring atmospheric, acoustic and particle emissions, as well as soil and water contaminants. Our facilities are subject to periodic inspections by local health and environmental agencies. Our facilities have consistently fulfilled legal threshold requirements. We do not, however, stop at fulfilling the minimum legal standard; we have taken things further, engineering energy efficient solutions into our workplace and production facilities. Our adoption of high-efficiency boilers and smart air conditioning systems, has led to substantial gas and electricity

savings. Also, the adoption of an oil/water separator has allowed us to recover reusable lubricant following machinery cleaning operations.

COMMUNICATING VALUES

We strive to gather support for our initiatives via concerted information and training campaigns. Guidelines are internally published under the 'Integrated Systems Manual' containing recommendations for employees, hired staff and business partners. The manual provides a suitable point of reference, ensuring that day-to-day activities match up to our good intentions.



119

**10 BRANCHES, 22 DISTRIBUTORS,
119 SALES AGENTS WORLDWIDE**



**BECOME AN EMEC
PARTNER**





Join EMEC. Join a quality-driven partnership.

WORLDWIDE

Distribution partnerships with EMEC offer competitive business opportunities. As an exclusive distributor you will be dealing with reliable, high precision, quality certified products with an international reputation. Boasting an outstanding price-quality ratio, exclusive distribution rights are up for tender in your country.

Entering an EMEC partnership will place you in contact with a solid industrial concern, whose management structure is geared around stability and continuity. At EMEC we offer you, our partners, full assistance in setting up distribution agreements within your country of operation, assisting with both technical and administrative issues. As partners you will benefit from our in-house logistics department, which ensures timely processing of orders and on-time delivery anywhere in the world. At EMEC we have in-depth, state-by-state knowledge of customs and excise procedures.

You will also have access to our ongoing training programs, granting you – the partners – discretion over which training topics to cover, as well as schedules and venues. You will have access to our online training facilities, via your [HYPERLINK "http://www.emec.it"](http://www.emec.it) www.emec.it partner account.

EMEC also offers you invaluable support in branding and marketing. Our fully integrated production cycle allows for

top-down control from the design stage, meaning you and your partners can have our products branded with company logos of your choosing. Our communications division will also be happy to assist with your every advertising, retail and event management requirement.

WORKING AT EMEC

As a consolidated player, we have acquired a market standing thanks to the outstanding contribution of the people who work with us on a daily basis. Operating in the specialist sector of the chemical industry, we continue to command the interest of highly qualified professionals and business counterparts. Years of commitment to ethical standards feed into efficient business performance.

We are constantly searching for committed, value-adding, professionals.





Contacts

EMEC S.r.l.

Via Donatori di Sangue, 1
02100 Vazia (RI) - Italia

T +39 0746 22841
T +39 0746 1725114
F +39 0746 22842

info@emec.it
www.emec.it

EMEC