

s.6400
ISO 5211
actuator mounting
hot forged 1/2"÷4"
full port brass ball valves



RoHS compliant

More and more automation is required at all levels in our society and the s.64 RuB range is the answer to all needs for reliable actuated ball valve. It features special seat design to automatically compensate for wear and it has successfully passed 100,000 cycle* life tests. You can purchase the valve alone or with the RuB actuator already mounted.

Features and Specifications:

- * **Hot forged** sand blasted, nickel plated brass body and cap sealed with Loctite or equivalent thread sealant,
- * **Approved by** GOST-R (RU), Hygenic (RU), ROSTEKHNADZOR (RU),
- * Assessment according to **Pressure Equipment Directive 97/23 CE** module B+D by Pascal (1115),
- * Finest brass according to **EN 12165** and **EN 12164** (formerly DIN 17660 and UNI 5705-65) specifications,
- * **ISO 5211** and **DIN 3337 mounting flange** for universal connection to actuator,
- * **100% full port** for maximum flow,
- * **24h 100%** seal test guaranteed,
- * **Reinforced PTFE** self-lubricating seats with flexible-lip and **wear compensation design**,
- * Dual sealing system allows valve to be operated in either direction making **installation easier**,
- * Chrome plated **solid brass ball**,
- * **No metal-to-metal** moving parts,
- * Nickel plated **blowout-proof** brass stem,

- * **Two FPM O-rings** at the stem for maximum safety,
- * **No maintenance** ever required,
- * **EN 10226-1, ISO 228** parallel Female by Female threads,
- * **Silicone-free** lubricant on all seals,
- * **40 bar** (Kg/cm²) up to 2", **30 bar** over 2", non-shock cold working pressure,
- * **-20°C +170°C** temperature (Warning: freezing of the fluid in the installation may severely damage the valve),
- * For use with **dangerous fluids** temperature rating is -20°C +60°C and pressure rating is 5 bar.

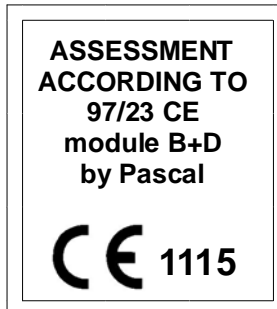
Options:

- * **Special valve configurations** available upon request,
- * Configurations for use with **slurries or liquids bearing abrasive particles**,
- * **s.64** configuration featuring **NPT taper ANSI B.1.20.1** Female by Female threads, unplated body, reinforced seats and brass or stainless stem,
- * Rack and pinion pneumatic **actuator (spring return or double acting)**.

RuB electric and pneumatic actuator



* All sizes up to 2" included



NOTE: Approval apply to specific configurations only.

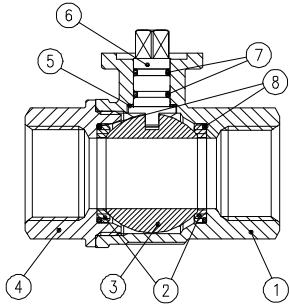




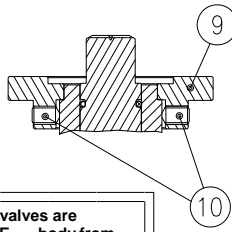
RUBINETTERIE UTENSILERIE BONOMI SRL

VIA PADANA SUPERIORE, 27/29 - FRAZ. CILIVERGHE, 25080 MAZZANO (BS) - ITALY

Fax+39 030 2629498
 Phone+39 030 212441
 www.rubvalves.com
 sales@rubvalves.com



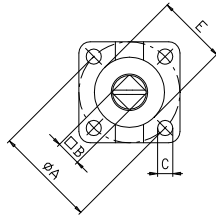
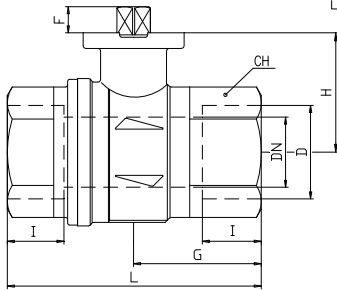
Valve configuration up to 2"



Ball valves are CE body from 1.1/4" to 4" as follow

CE Cat II B+D
 PS: 5
 TS1: -20° C
 TS2: +60°

1115



PART DESCRIPTION	Q.ty	Material
1 Nickel plated body	1	CW617N
2 Ball seat	2	Ptfe graphite filled 15%
3 Chrome plated ball	1	CW617N
4 Nickel plated end cap	1	CW617N
5 Washer	1	Ptfe carbon filled 25%
6 Nickel plated stem O-Ring design	1	CW617N
7 O-Ring	2	FPM
8 O-Ring	2	FPM
9 Flange (only from 2.1/2" to 4")	1	Aluminum
10 Grub screw (only from 2.1/2" to 4")	2	CB4FF

Code	S64D00	S64E00	S64F00	S64G00	S64H00	S64I00	S84L00AM	S84M00AM	S84N00AM
D (inch)	1/2	3/4	1	1 1/4	1 1/2	2	2 1/2	3	4
DN(mm)	15	20	25	32	40	50	65	80	100
I (mm)	15.5	18	21	23	24.5	26.5	32	35	41.5
L (mm)	75	80	90	110	120	140	156	177	216
G (mm)	30.5	37	45.5	52	59	67.5	78	88.5	108
H (mm)	31	38.5	42.5	55.5	62	69	89	96	111
CH(mm)	27	32	41	50	55	70	85	99	125
ØA(mm)	36	36	36	50	50	50	70	70	70
□B(mm)	9	9	9	11	11	14	17	17	17
C (mm)	5.6	5.6	5.6	6.6	6.6	6.6	8.5	8.5	8.5
E(mm)	25	25	25	35	35	35	55	55	55
F(mm)	7.5	8.5	8.5	10	10	14.5	18	18	18
Flange connection DN ISO 5211 DN 5337	F03	F03	F03	F05	F05	F05	F07	F07	F07

Ball seats and Stem configuration of valves over 2" is different. Ask for details at our Service Center.

Torque for Actuator Sizing – N.m

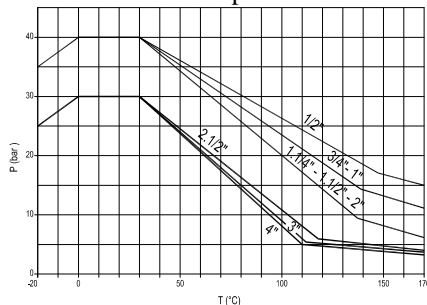
Delta P →	0 ÷ 15 Bar		40 Bar (30 Bar over 2")	
	To open	To close	To open	To close
1/2"	2,8	1,7	2,8	1,7
3/4"	3,8	2,3	3,8	2,3
1"	7,1	4,2	7,1	4,2
1.1/4"	11,7	12,6	13,6	12,6
1.1/2"	24,9	20,3	30,9	20,3
2"	29,6	25,1	37	25,1
2.1/2"	42	42	105	105
3"	102	102	120	120
4"	186	186	225	225

Torque correction factors

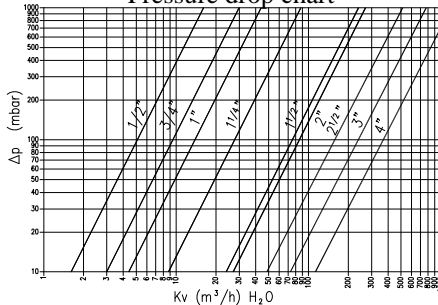
Valve torque can vary according to operating frequency, temperature, and friction characteristics of the media. If media has more or less friction than water, multiply torque by the following factors.

- Lubricating oils or liquids 0.8
 - Dry gases, superheated steam 1.5
 - Slurries or liquids bearing abrasive particles 1.5÷2.5
- For other conditions please inquire of your RuB representative or distributor.

Pressure - Temperature chart



Pressure drop chart



Ask for additional information on the whole range of RuB valves and consult with your supplier for special applications.

