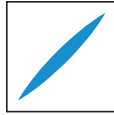
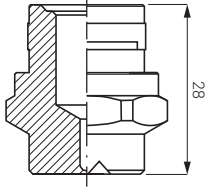
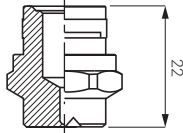


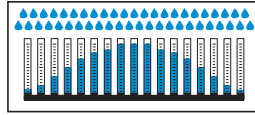
HT (QUICK-CONNECT FLAT FAN NOZZLES)

STANDARD AND LARGE CAPACITY

The HT series flat fan nozzles offer the same quality and technical characteristics of the standard types but also the additional convenience of a bayonet coupling which allows a simple assembly with no need of tools and an automatic spray pattern alignment. The optimum performance of your system or machine is then conveniently safeguarded, with a noticeable reduction in service cost and production loss for system downtime. HT series are widely applied to working environments that are easy to clog. HT nozzles are available with low, standard and large.



Spray section



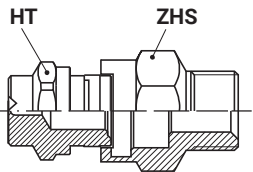
Convex distribution



QUICK-CONNECT NOZZLES



HT + ZHS



HTA 0°	HTL 40°	HTN 50°	HTR 65°	HTT 80°	HTV 95°	HTJ 110°	CODE	D mm	Capacity at different pressure values								(l/min) (bar)
									0.5	1.0	1.5	2.0	3.0	5.0	7.0	10	

LOW CAPACITY TIPS

•	•	•	•	•	•	•	•	0260	0.53	0.11	0.15	0.18	0.21	0.26	0.34	0.40	0.47
•	•	•	•	•	•	•	•	0390	0.66	0.16	0.23	0.28	0.32	0.39	0.50	0.60	0.71
•	•	•	•	•	•	•	•	0590	0.79	0.24	0.34	0.42	0.48	0.59	0.76	0.90	1.08
•	•	•	•	•	•	•	•	0780	0.91	0.32	0.45	0.55	0.64	0.78	1.01	1.19	1.42
•	•	•	•	•	•	•	•	1120	1.10	0.49	0.69	0.85	0.98	1.20	1.55	1.83	2.19
•	•	•	•	•	•	•	•	1160	1.30	0.65	0.92	1.13	1.31	1.60	2.07	2.44	2.92
•	•	•	•	•	•	•	•	1190	1.30	0.78	1.10	1.34	1.55	1.90	2.45	2.90	3.50
•	•	•	•	•	•	•	•	1200	1.40	0.82	1.15	1.41	1.63	2.00	2.58	3.06	3.65
•	•	•	•	•	•	•	•	1230	1.50	0.94	1.33	1.63	1.88	2.30	2.97	3.51	4.20

STANDARD CAPACITY TIPS

•	•	•	•	•	•	•	•	1310	1.70	1.27	1.79	2.19	2.53	3.10	4.00	4.74	5.66
•	•	•	•	•	•	•	•	1385	1.80	1.57	2.22	2.72	3.14	3.85	4.97	5.88	7.03
•	•	•	•	•	•	•	•	1490	2.10	2.00	2.83	3.46	4.00	4.90	6.33	7.48	8.95
•	•	•	•	•	•	•	•	1581	2.30	2.37	3.35	4.11	4.74	5.81	7.50	8.87	10.6
•	•	•	•	•	•	•	•	1780	2.70	3.18	4.50	5.52	6.37	7.80	10.1	11.9	14.2
•	•	•	•	•	•	•	•	1980	3.00	4.00	5.66	6.93	8.00	9.80	12.7	15.0	17.9
•	•	•	•	•	•	•	•	2124	3.40	5.06	7.16	8.77	10.1	12.4	16.0	18.9	22.6
•	•	•	•	•	•	•	•	2153	3.80	6.25	8.83	10.8	12.5	15.3	19.8	23.4	27.9
•	•	•	•	•	•	•	•	2194	4.30	7.96	11.3	13.8	15.9	19.5	25.2	29.8	35.6

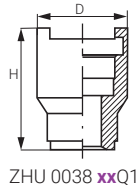
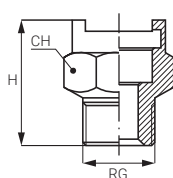
HIGH CAPACITY TIPS

•	•	•	•	•	•	•	•	2310	5.40	12.7	17.9	21.9	25.3	31.0	40.0	47.4	56.6
•	•	•	•	•	•	•	•	2390	6.00	15.9	22.5	27.6	31.8	39.0	50.3	59.6	71.2
•	•	•	•	•	•	•	•	2470	6.60	19.2	27.1	33.2	38.4	47.0	60.7	71.8	85.8
•	•	•	•	•	•	•	•	2590	7.50	24.1	34.1	41.7	48.2	59.0	76.2	90.1	108
•	•	•	•	•	•	•	•	2780	8.70	31.8	45.0	55.2	63.7	78.0	101	119	142

ACCESSORIES

We offer various specification and materials of nipples. Please see below ordering code

Name	Thread (RG) inch	Standard size	Large size	H mm	WS mm	D mm
Male nipple	1/4"	ZHS 0025 xxQ1	-	29	22	-
	3/8"	ZHS 0038 xxQ1	-	29	22	-
	1/2"	-	ZHS 0050 xxQ2	35	30	-
Female nipple	3/8"	ZHT 0038 xxQ1	-	29	22	-
Welding nipple	-	ZHU 0038 xxQ1	ZHU 0050 xxQ2	32	-	28
Seal (Viton) for SS nipples	-	VDH BQ10 E7	VDH BQ20 E7	-	-	-
GSeal (BUNA) for brass nipples	-	VDH BQ10 E8	VDH BQ20 E8	-	-	-



ZHU 0038 xxQ1



ZHS 0025 xxQ1



ZHS 0050 xxQ2

HOW TO MAKE UP THE NOZZLE CODE

Ex.: HTA 1310 B1

