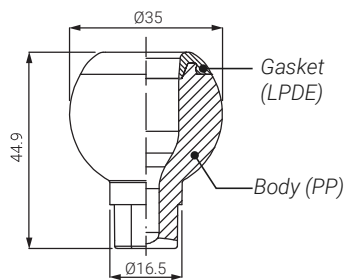


# HG, RG ( PLASTIC SWIVEL BALL NOZZLES )



**HGQ 2117 D5**  
Flat fan nozzle



## PLASTIC SWIVEL BALL NOZZLES

HGQ and RGN plastic swivel ball nozzles are designed for diversified applications. They allow an easy adjustment of their spray jet direction and offer a quick-fit connection.

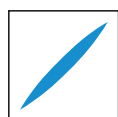
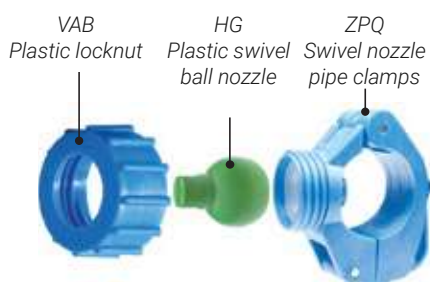
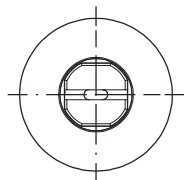
- NOZZLE TYPE Flat fan nozzles (HG), Hollow cone nozzles (RG)  
 TYPICAL APPLICATION Cleaning equipment used in pre-treatment for coating process  
 MATERIAL Body **D5** PP, talcum filled  
**D6** PP, chemically bonded fiberglass

## HG - FLAT FAN NOZZLES

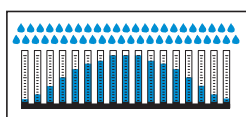
HGQ flat fan nozzles feature a 60° spray angle and their wide range of flow rates makes them the best choice in pre-treatment plants. For an easier identification and use, they are made in different colours depending on the flow rate. The material is top quality PP, chemically bonded fiberglass to offer the best stability at high temperatures and resistance to chemicals.



Gasket (LDPE, low-density polyethylene)



Spray section



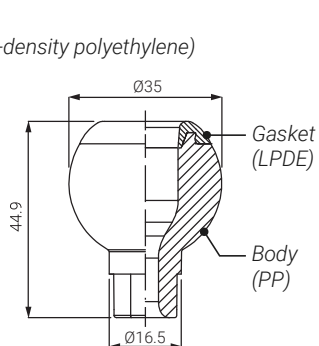
Convex distribution



60°	CODE	Capacity at different pressure values (l/min) (bar)						Colour	W g
		0.5	0.7	1.0	1.5	2.0	3.0		
	HGQ 1390 xx	1.70	2.00	2.40	2.90	3.30	3.90	BLACK	16
	HGQ 1780 xx	3.18	3.77	4.50	5.52	6.37	7.80	PURPLE	
	HGQ 1980 xx	4.00	4.70	5.60	6.90	8.00	9.80	BROWN	
	HGQ 2117 xx	4.60	5.50	6.50	8.00	9.30	11.7	YELLOW	
	HGQ 2135 xx	5.50	6.50	7.80	9.50	11.0	13.5	GREY	
	HGQ 2155 xx	6.20	7.40	8.80	10.8	12.5	15.5	RED	
	HGQ 2195 xx	7.80	9.20	11.0	13.8	15.6	19.5	GREEN	
	HGQ 2230 xx	9.50	11.3	13.5	16.3	19.1	23.0	BLUE	
	HGQ 2270 xx	10.9	12.8	15.4	18.8	21.7	27.0	SKY BLUE	
	HGQ 2337 xx	13.8	16.4	19.5	24.0	27.7	33.7	WHITE	
	HGQ 2410 xx	16.7	19.8	23.6	29.0	33.5	41.0	PINK	

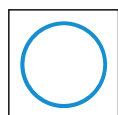


**RGN**  
Hollow cone nozzle

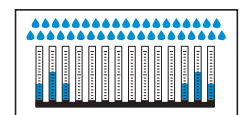


## RG - HOLLOW CONE NOZZLES

RGN hollow cone nozzles have a 50° spray angle and offer a wide range of flow rates, all identified by a particular nozzle colour to avoid any possible confusion. The material is top quality PP, chemically bonded fiberglass to offer the best stability at high temperatures and resistance to chemicals. For these features they are widely used in pre-treatment plants.



Spray section



Concave distribution



50°	CODE	Capacity at different pressure values (l/min) (bar)						Colour	W g
		0.5	0.7	1.0	1.5	2.0	3.0		
	RGN 2175 xx	7.10	8.50	10.1	12.4	14.3	17.5	RED	25
	RGN 2215 xx	8.80	10.4	12.4	15.2	17.6	21.5	BLUE	
	RGN 2390 xx	15.9	18.8	22.5	27.6	31.8	39.0	BLACK	

### HOW TO MAKE UP THE PRODUCT CODE

Ex.: HGQ 1390 D5

### HGQ 1390 D5

- MATERIAL**
  - D5 - PP, talcum filled
  - D6 - PP, chemically bonded fiberglass
- CAPACITY**
- NOZZLE TYPE**
  - HGQ - Flat fan nozzles (60°)
  - RGN - Hollow cone nozzles (50°)