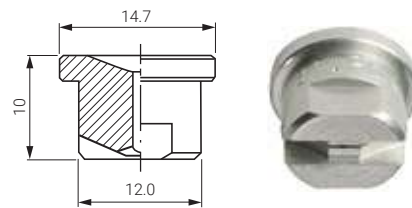


( FLAT FAN NOZZLE TIPS ) **GX**

LOW CAPACITY

Flat fan nozzle tips are usually mounted onto a pipe by means of a welded nipple or a clamp, and secured in place with a retaining nut. They can be easily replaced and the jet can be conveniently oriented in the desired direction.

The tips models shown on this page delivery very low flow values. Their precisely machined small orifices can be protected from clogging by means of a filter assembled inside our nipples and clamps that are designed for this purpose.



CONNECTION: flange

TYPICAL APPLICATIONS

*Washing:* semiconductor and precision parts cleaning

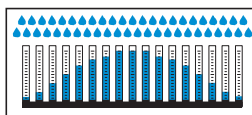
*Cooling:* continuous casting, product cooling

*Lubrication:* spray of lubricating oils and release agents

*Other applications:* spray of flavouring agents, cooling oil and antifoulant chemicals



Spray section

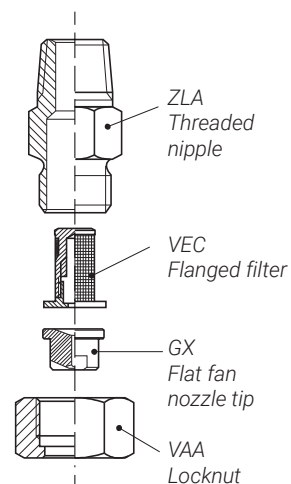


Convex distribution

GXD 25°	GXL 40°	GXN 50°	GXR 65°	CAPACITY CODE	D mm	Capacity at different pressure values (l/min) (bar)									
						0.7	1.0	1.5	2.0	3.0	4.0	5.0	7.0	10	
			•	0060	0.28	0.02	0.03	0.04	0.05	0.06	0.07	0.08	0.09	0.11	
			•	0100	0.34	0.05	0.06	0.07	0.08	0.10	0.12	0.13	0.15	0.18	
			•	0130	0.38	0.06	0.08	0.09	0.11	0.13	0.15	0.17	0.20	0.24	
•	•	•	•	0150	0.40	0.07	0.09	0.11	0.12	0.15	0.17	0.19	0.23	0.27	
•	•	•	•	0200	0.46	0.08	0.12	0.14	0.16	0.20	0.23	0.26	0.31	0.37	
•	•	•	•	0260	0.53	0.11	0.15	0.18	0.21	0.26	0.30	0.34	0.40	0.47	
•	•	•	•	0390	0.66	0.16	0.23	0.28	0.32	0.39	0.45	0.50	0.60	0.71	
•	•	•	•	0590	0.79	0.24	0.34	0.42	0.48	0.59	0.68	0.76	0.90	1.08	

GXS 75°	GXT 80°	GXV 95°	GXJ 110°	CAPACITY CODE	D mm	Capacity at different pressure values (l/min) (bar)									
						0.7	1.0	1.5	2.0	3.0	4.0	5.0	7.0	10	
•				0100	0.34	0.05	0.06	0.07	0.08	0.10	0.12	0.13	0.15	0.18	
•				0130	0.38	0.06	0.08	0.09	0.11	0.13	0.15	0.17	0.20	0.24	
•	•	•	•	0150	0.40	0.07	0.09	0.11	0.12	0.15	0.17	0.19	0.23	0.27	
•	•	•	•	0200	0.46	0.08	0.12	0.14	0.16	0.20	0.23	0.26	0.31	0.37	
•	•	•	•	0260	0.53	0.11	0.15	0.18	0.21	0.26	0.30	0.34	0.40	0.47	
•	•	•	•	0390	0.66	0.16	0.23	0.28	0.32	0.39	0.45	0.50	0.60	0.71	
•	•	•	•	0590	0.79	0.24	0.34	0.42	0.48	0.59	0.68	0.76	0.90	1.08	

ASSEMBLY FITTINGS



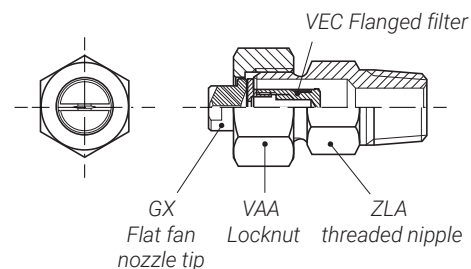
MATERIAL PROCESSING

Because of the extreme difficulty of working hard materials such as stainless steels with very small profile drills, not all the capacity sizes shown in the nozzle table are available in all materials. The table below shows the minimum capacity values we can produce for each given material. Please contact our sales for more information.

Material	0060	0100	0130	0150	0200	0260	0390	0590	0780
<b>B31</b> - AISI 316L					•	•	•	•	•(1)
<b>B1</b> - AISI 303	•	•	•	•	•	•	•	•	•(2)
<b>T1</b> - Brass	•	•	•	•	•	•	•	•	•(2)

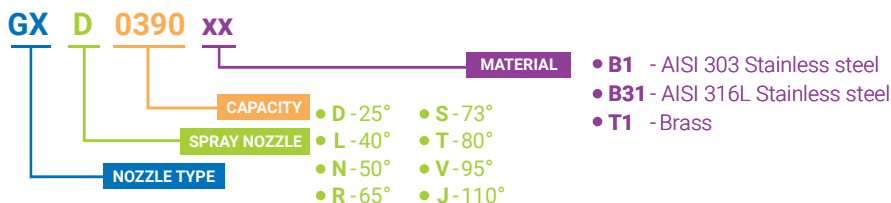
(1) Low capacity body

(2) Standard capacity body



HOW TO MAKE UP THE NOZZLE CODE

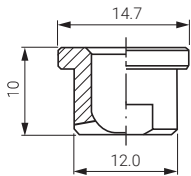
Ex.: GXD 0390 B1



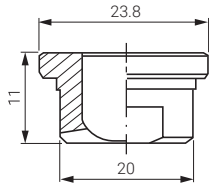
# GX (FLAT FAN NOZZLE TIPS)



3/8" Standard capacity



3/4" Large capacity



## STANDARD AND LARGE CAPACITIES

Flat fan nozzle tips are usually mounted onto a pipe by means of a welded 3/8" nipple or a clamp, and secured in place with a retaining nut. They can be easily replaced and their jet can be conveniently oriented in the desired direction. These nozzle are available in two types: 3/8" standard capacity and 3/4" large capacity. The tip is assembled with a pipe clamp, a welding nipple and a locknut.

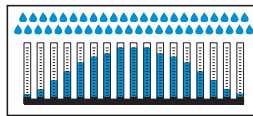
CONNECTION: Flange

### TYPICAL APPLICATIONS

- Washing:* filter cloth cleaning, parts cleaning, vehicles cleaning
- Cooling:* steel cooling, product cooling
- Lubrication:* spray of lubricating oil and release agents
- Other applications:* spray of antifoulant chemicals, etc.



Spray section



Convex distribution



## 3/8" PLASTIC TIPS

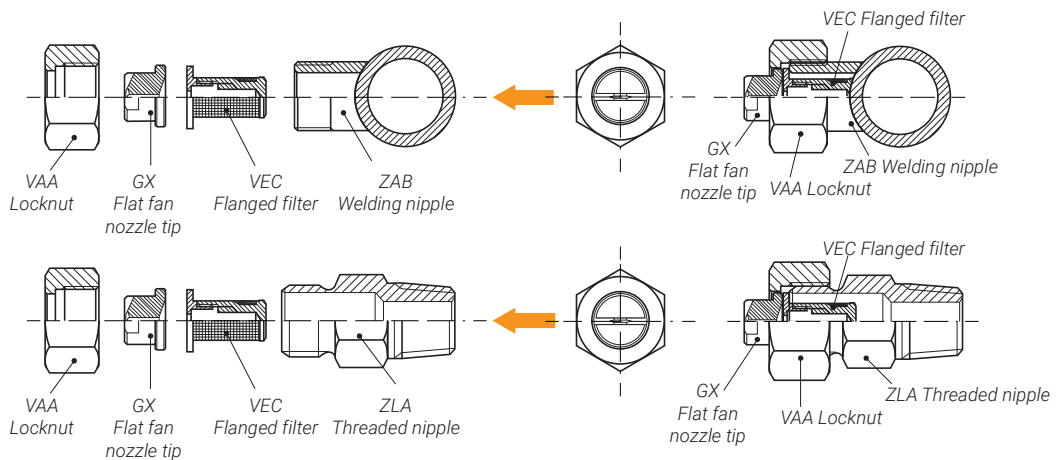


**NEW** Also available in high quality PVDF

GXQ 60°	GXU 90°	GXJ 110°	CODE	D mm	(l/min) (bar)									
					0.5	1.0	1.5	2.0	3.0	4.0	5.0	7.0	10	
		•	<b>0780</b>	0.91	0.32	0.45	0.55	0.64	0.78	0.90	1.01	1.19	1.42	
•		•	<b>1120</b>	1.10	0.49	0.69	0.85	0.98	1.20	1.39	1.55	1.83	2.19	
•	•	•	<b>1233</b>	1.50	0.95	1.35	1.65	1.90	2.33	2.69	3.01	3.56	4.25	
	•	•	<b>1310</b>	1.70	1.27	1.79	2.19	2.53	3.10	3.58	4.00	4.74	5.66	
	•	•	<b>1490</b>	2.10	2.00	2.83	3.46	4.00	4.90	5.66	6.33	7.48	8.95	

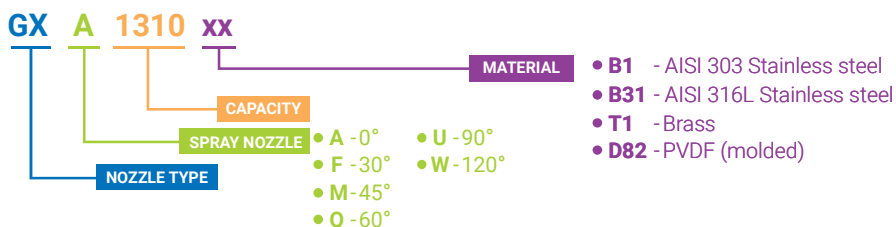
## ASSEMBLY FITTINGS

In the table you can check the available 3/8" GX tips, manufactured in plastic material (D82 - molded PVDF).



### HOW TO MAKE UP THE NOZZLE CODE

Ex.: GXA 1310 B1



( FLAT FAN NOZZLES TIPS ) **GX**

3/8" STANDARD CAPACITY TIPS

GXA 0°	GXF 30°	GXM 45°	GXQ 60°	GXU 90°	GXW 120°	CODE	D mm	Capacity at different pressure values										(l/min) (bar)	
								0.5	1.0	1.5	2.0	3.0	4.0	5.0	7.0	10			
•	•	•	•	•	•	<b>0780</b>	0.91	0.32	0.45	0.55	0.64	0.78	0.90	1.01	1.19	1.42			
•	•	•	•	•	•	<b>1120</b>	1.10	0.49	0.69	0.85	0.98	1.20	1.39	1.55	1.83	2.19			
•	•	•	•	•	•	<b>1160</b>	1.30	0.65	0.92	1.13	1.31	1.60	1.85	2.07	2.44	2.92			
•	•	•	•	•	•	<b>1190</b>	1.30	0.78	1.10	1.34	1.55	1.90	2.19	2.45	2.90	3.47			
•	•	•	•	•	•	<b>1233</b>	1.50	0.95	1.35	1.65	1.90	2.33	2.69	3.01	3.56	4.25			
•	•	•	•	•	•	<b>1310</b>	1.70	1.27	1.79	2.19	2.53	3.10	3.58	4.00	4.74	5.66			
•	•	•	•	•	•	<b>1385</b>	1.80	1.57	2.22	2.72	3.14	3.85	4.45	4.97	5.88	7.03			
•	•	•	•	•	•	<b>1490</b>	2.10	2.00	2.83	3.46	4.00	4.90	5.66	6.33	7.48	8.95			
•	•	•	•	•	•	<b>1581</b>	2.30	2.37	3.35	4.11	4.74	5.81	6.71	7.50	8.87	10.6			
•	•	•	•	•	•	<b>1780</b>	2.70	3.18	4.50	5.52	6.37	7.80	9.01	10.1	11.9	14.2			
•	•	•	•	•	•	<b>1980</b>	3.00	4.00	5.66	6.93	8.00	9.80	11.3	12.7	15.0	17.9			
•	•	•	•	•	•	<b>2124</b>	3.40	5.06	7.16	8.77	10.1	12.4	14.3	16.0	18.9	22.6			
•	•	•	•	•	•	<b>2153</b>	3.80	6.25	8.83	10.8	12.5	15.3	17.7	19.8	23.4	27.9			
•	•	•	•	•	•	<b>2194</b>	4.30	7.92	11.2	13.7	15.8	19.4	22.4	25.0	29.6	35.4			
•	•	•	•	•	•	<b>2245</b>	4.80	10.0	14.1	17.3	20.0	24.5	28.3	31.6	37.4	44.7			

**IMPORTANT**  
Nozzle **GXx 0780 B31** is made with "low capacity" body, while when it's fabricated with other materials is made with "standard capacity" body.

3/4" LARGE CAPACITY TIPS

GXA 0°	GXF 30°	GXM 45°	GXQ 60°	GXU 90°	GXW 120°	CODE	D mm	Capacity at different pressure values										(l/min) (bar)	
								0.5	1.0	1.5	2.0	3.0	4.0	5.0	7.0	10			
•	•	•	•	•	•	<b>1781</b>	2.70	3.18	4.50	5.52	6.37	7.80	9.01	10.1	11.9	14.2			
•	•	•	•	•	•	<b>1981</b>	3.00	4.00	5.66	6.93	8.00	9.80	11.3	12.7	15.0	17.9			
•	•	•	•	•	•	<b>2125</b>	3.40	5.06	7.16	8.77	10.1	12.4	14.3	16.0	18.9	22.6			
•	•	•	•	•	•	<b>2154</b>	3.80	6.25	8.83	10.8	12.5	15.3	17.7	19.8	23.4	27.9			
•	•	•	•	•	•	<b>2195</b>	4.30	7.92	11.2	13.7	15.8	19.4	22.4	25.0	29.6	35.4			
•	•	•	•	•	•	<b>2246</b>	4.80	10.0	14.1	17.3	20.0	24.5	28.3	31.6	37.4	44.7			
•	•	•	•	•	•	<b>2311</b>	5.40	12.7	18.0	22.0	25.4	31.1	35.9	40.1	47.5	56.8			
•	•	•	•	•	•	<b>2490</b>	6.40	20.0	28.3	34.6	40.0	49.0	56.6	63.3	74.8	89.5			
•	•	•	•	•	•	<b>2610</b>	7.50	24.9	35.2	43.1	49.8	61.0	70.4	78.8	93.2	111			
•	•	•	•	•	•	<b>2760</b>	8.30	31.0	43.9	53.7	62.1	76.0	87.8	98.1	116	139			
•	•	•	•	•	•	<b>3122</b>	12.5	49.8	70.4	86.3	99.6	122	141	158	186	223			

ASSEMBLY FITTINGS CODING

Name	Code and material	Appearance	Standard size 3/8"	Large size 3/4"
Locknut <i>P.90</i>	<b>B1</b> - AISI 303 <b>B31</b> - AISI 316L <b>T1</b> - Brass <b>D6</b> - Fiberglass reinforced PP		VAA 0380 <b>xx</b> B	VAA 0750 <b>xx</b> B
Welding nipple <i>P.91</i>	<b>B1</b> - AISI 303 <b>B31</b> - AISI 316L		ZAA C018 <b>xx</b> G	ZAA E027 <b>xx</b> G
Threaded nipple <i>P.91</i>	<b>B1</b> - AISI 303 <b>B31</b> - AISI 316L <b>T1</b> - Brass		ZLA 2538 <b>xx</b> B	ZLA 7575 <b>xx</b> B
Metal pipe clamp <i>P.89</i>	<b>B1</b> - AISI 303 <b>T1</b> - Brass		ZPM	—
Plastic pipe clamp <i>P.88</i>	<b>D6</b> - Fiberglass reinforced PP		ZPB 0050 D6	—
Plastic bayonet pipe clamp <i>P.88</i>	<b>D82</b> - PVDF		ZPC 0500 D82P	—
Flanged filter <i>P.94</i>	<b>B1</b> - AISI 303 <b>B31</b> - AISI 316L <b>T1</b> - Brass <b>D3</b> - Polyamide		VEC 0138 <b>xx</b>	—