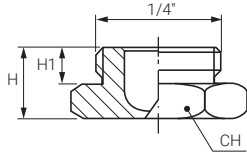


GA (FLAT FAN NOZZLES / SHORT BODY)

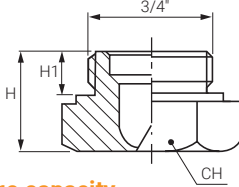
SHORT BODY



1/4" Standard Capacity



3/4" Large capacity



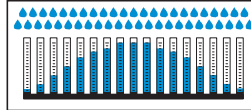
The special short body design of the GA nozzles makes it possible to use nozzle spray pipes in such machines or systems where the available space is very limited. (for ex., tight turns in traps and elbows).

They allow an even jet distribution and a proper force of impact. GA nozzles are available in two types: 1/4" standard capacity and 3/4" large capacity. They are made in brass, stainless steel or in plastic materials to suit different working environments. GA nozzles in plastic materials are made with a longer thread and bigger front for higher efficiency and longer service life.

THREAD SPECIFICATION: BSP



Spray section



Convex distribution



TYPICAL APPLICATIONS

Washing:

Filter cleaning in paper making machines and dryers

Cooling:

Continuous casting
Product cooling

Other applications:

Spray of chemicals
Water curtains for toxic gases suppression
Excellent for pipe, sewer and drain cleaning

CAPACITY CODE	Capacity at different pressure values (l/min) (bar)									
	0.5	1.0	1.5	2.0	3.0	4.0	5.0	7.0	10	
BSP 1/4" THREADED	0780*	0,32	0,45	0,55	0,64	0,78	0,9	1,01	1,19	1,42
	1124	0,51	0,72	0,88	1,01	1,24	1,43	1,6	1,89	2,27
	1160	0,65	0,92	1,13	1,31	1,6	1,85	2,07	2,44	2,92
	1190	0,78	1,1	1,34	1,55	1,9	2,19	2,45	2,9	3,47
	1233	0,95	1,35	1,65	1,9	2,33	2,69	3,01	3,56	4,25
	1244	1	1,41	1,73	1,99	2,44	2,82	3,15	3,73	4,45
	1310	1,27	1,79	2,19	2,53	3,1	3,58	4	4,74	5,66
	1385	1,57	2,22	2,72	3,14	3,85	4,45	4,97	5,88	7,03
	1490	2	2,83	3,46	4	4,9	5,66	6,33	7,48	8,95
	1581	2,37	3,35	4,11	4,74	5,81	6,71	7,5	8,87	10,61
	1780	3,18	4,5	5,52	6,37	7,8	9,01	10,07	11,91	14,24
	1980	4	5,66	6,93	8	9,8	11,32	12,65	14,97	17,89
	2124	5,1	7,2	8,8	10,1	12,4	14,3	16	18,9	22,6
	2153	6,2	8,8	10,8	12,5	15,3	17,7	19,8	23,4	27,9
2194	7,9	11,2	13,7	15,8	19,4	22,4	25	29,6	35,4	
2245	10	14,1	17,3	20	24,5	28,3	31,6	37,4	44,7	

* Not available in B31, D2 and E1.

CAPACITY CODE	Capacity at different pressure values (l/min) (bar)									
	0.5	1.0	1.5	2.0	3.0	4.0	5.0	7.0	10	
BSP 3/4" THREADED	2154	6,2	8,8	10,8	12,5	15,3	17,7	19,8	23,4	27,9
	2195	7,9	11,2	13,7	15,8	19,4	22,4	25	29,6	35,4
	2246	10	14,1	17,3	20	24,5	28,3	31,6	37,4	44,7
	2311	12,7	18	22	25,4	31,1	35,9	40,1	47,5	56,8
	2490	20	28,3	34,6	40	49	56,6	63,3	74,8	89,5
	2610	24,9	35,2	43,1	49,8	61	70,4	78,8	93,2	111,4
	2760	31	43,9	53,7	62,1	76	87,8	98,1	116,1	138,8
	2930	38	53,7	65,8	75,9	93	107,4	120,1	142,1	169,8
	3122	49,8	70,4	86,3	99,6	122	140,9	157,5	186,4	222,7

Longer thread and bigger front design for short-body nozzles in plastic to ensure safer operating performances and longer service life.



GA series nozzle metal design

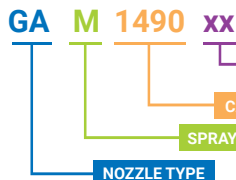


GA series nozzle plastic design

Material	Dimensions (mm)					
	Small size (1/4")			Large size (3/4")		
	H	H1	CH	H	H1	CH
B1 - AISI 303 SS	12	7	17	15	8	32
B31 - AISI 316L SS						
T1 - Brass						
D2 - PP	17	7	17	23	11	32
E1 - PTFE						
D1 - PVC						

HOW TO MAKE UP THE NOZZLE CODE

EX.: GAM 1490 B1



- M - 45°
- Q - 60°
- U - 90°
- W - 120°

- B1 - AISI 303 Stainless steel
- B31 - AISI 316L Stainless steel
- T1 - Brass
- D1 - PVC (optional)
- D2 - PP (optional)
- E1 - PTFE (optional)