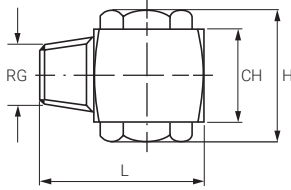


AT (FULL CONE NOZZLES / TANGENTIAL)



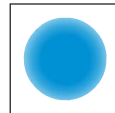
VANELESS – OFF LINE

AT series nozzles are full cone nozzles producing a high and strong rotation of the liquid. There's no vane inside the whirl chamber which has free internal passages and for this reason these nozzles are less prone to clogging. Moreover, a specially designed tip placed at the bottom of these nozzles increases their atomizing effect. The design of AT nozzles allows a uniform spray distribution and increases their operating life by 20%.

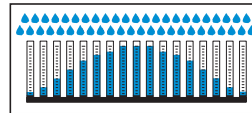


THREAD SPECIFICATION:

- BSPT
- NPT (su richiesta)



Spray section



Convex distribution



ANGLE	CODE	RG inch	D mm	D1 mm	Capacity at different pressure values (l/min) (bar)							H mm	L mm	WS mm
					1.0	2.0	3.0	4.0	5.0	6.0	7.0			
60°	ATQ 1230 xx	1/8"	2.0	1.8	1.33	1.88	2.30	2.66	2.97	3.25	3.51	22	24	15
	ATQ 1390 xx	1/4"	2.4	2.2	2.25	3.18	3.90	4.50	5.03	5.52	5.96	25	34	20
	ATQ 1490 xx		2.9	2.8	2.83	4.00	4.90	5.66	6.33	6.93	7.48			
	ATQ 1740 xx		3.3	3.2	4.27	6.04	7.40	8.54	9.55	10.5	11.3			
	ATQ 2110 xx	3/8"	5.1	4.6	6.35	8.98	11.0	12.7	14.2	15.6	16.8	27	34	20
90°	ATU 1230 xx	1/8"	2.1	1.8	1.33	1.88	2.30	2.66	2.97	3.25	3.51	22	24	15
	ATU 1390 xx	1/4"	2.5	2.1	2.25	3.18	3.90	4.50	5.03	5.52	5.96	25	34	20
	ATU 1490 xx		3.0	2.1	2.83	4.00	4.90	5.66	6.33	6.93	7.48			
	ATU 1620 xx		3.2	3.0	3.58	5.06	6.20	7.16	8.00	8.77	9.47			
	ATU 1621 xx	3/8"	3.5	3.2	3.58	5.06	6.20	7.16	8.00	8.77	9.47	27	34	20
	ATU 1780 xx		5.0	3.4	4.50	6.37	7.80	9.01	10.1	11.0	11.9			
	ATU 2110 xx		5.1	4.3	6.35	8.98	11.0	12.7	14.2	15.6	16.8			
	ATU 2153 xx		5.3	5.2	8.83	12.5	15.3	17.7	19.8	21.6	23.4			
	ATU 2245 xx	1/2"	8.7	5.5	14.1	20.0	24.5	28.3	31.6	34.6	37.4	38	48	30
	ATU 2315 xx		8.7	6.5	18.2	25.7	31.5	36.4	40.7	44.5	48.1			
	ATU 2385 xx		8.8	7.2	22.2	31.4	38.5	44.5	49.7	54.4	58.8			
	ATU 2530 xx	3/4"	12.6	8.7	30.6	43.3	53.0	61.2	68.4	75.0	81.0	50	58	40
ATU 2770 xx		12.6	11.2	44.5	62.9	77.0	88.9	99.4	109	118				
ATU 2420 xx	1"	9.2	9.8	24.2	34.3	42.0	48.5	54.2	59.4	64.2	48	61	42	
ATU 2645 xx		10.3	10.3	37.2	52.7	64.5	74.5	83.3	91.2	98.5				
ATU 2870 xx		16.0	11.5	50.2	71.0	87.0	100	112	123	133				
120°	ATW 1310 xx	1/8"	2.5	2.1	1.79	2.53	3.10	3.58	4.00	4.38	4.74	22	24	15
	ATW 1311 xx	1/4"	2.5	2.1	1.79	2.53	3.10	3.58	4.00	4.38	4.74	25	34	20
	ATW 1490 xx		4.1	2.4	2.83	4.00	4.90	5.66	6.33	6.93	7.48			
	ATW 1491 xx	3/8"	4.2	2.7	2.83	4.00	4.90	5.66	6.33	6.93	7.48	27	34	20
	ATW 1621 xx		4.5	3.2	3.58	5.06	6.20	7.16	8.00	8.77	9.47			
	ATW 1780 xx		5.0	3.4	4.50	6.37	7.80	9.01	10.1	11.0	11.9			
	ATW 2110 xx		5.4	4.4	6.35	8.98	11.0	12.7	14.2	15.6	16.8			
	ATW 2245 xx	1/2"	8.5	5.5	14.1	20.0	24.5	28.3	31.6	34.6	37.4	38	48	30
	ATW 2315 xx		8.5	6.3	18.2	25.7	31.5	36.4	40.7	44.5	48.1			
	ATW 2231 xx	3/4"	8.4	5.2	13.3	18.8	23.0	26.6	29.7	32.5	35.1	56	59	40
	ATW 2385 xx		8.8	7.3	22.2	31.4	38.5	44.5	49.7	54.5	58.8			
	ATW 2480 xx		12.6	7.8	27.7	39.2	48.0	55.4	62.0	67.9	73.3			
	ATW 2770 xx		14.0	10.7	44.5	62.9	77.0	88.9	99.4	109	118			
	ATW 2420 xx	1"	9.5	8.0	24.2	34.3	42.0	48.5	54.2	59.4	64.2	48	61	42
	ATW 2645 xx		12.8	9.2	37.2	52.7	64.5	74.5	83.3	91.2	98.5	58	61	40
ATW 2870 xx		16.0	11.5	50.2	71.0	87.0	100	112	123	133	61	68	45	
ATW 3122 xx		18.0	14.0	70.4	99.6	122	141	158	173	186	66	76	50	

TYPICAL APPLICATIONS

- Washing:
 - Exhaust scrubber
 - Parts cleaning
 - Pre-treatment for coating process.
- Cooling:
 - Gas cooling
 - Tank cooling
- Dust control:
 - Remove dust flying in mining and coal plants.
- Other applications:
 - Spray of chemicals
 - Fire engineering

HOW TO MAKE UP THE NOZZLE CODE
Ex: ATQ 1230 B1

