

ALX heavy duty

STAINLESS STEEL AISI 304 / ACCIAIO INOX AISI 304

ø 410 mm
drum/tamburo

4R Optional 4-rollers
hose guide
*Guida tubo a 4 rulli
opzionale*

optional [page 80-83](#)

INLET HOSE

ALXSG20R

P12ARNF

P12A80/P12A95

 II 2G/D
optional



4R - Optional 4-rollers hose guide. Ordering the version indicating the hose reel code followed by "4R"
4R - *Guida tubo a 4 rulli opzionale. ordinare la versione indicando il codice dell'avvolgitubo seguito da "4R"*



EN Automatic hose reels designed for washing operations with water and detergent at different pressure and temperature conditions. Specific versions with food-quality hose suitable for the passage of drinking water are also available. The hose-guide support can be mounted in two different positions according to the hose reel installation (pos. A-B). Optional: connection hose, revolving stand, 4-rollers hose guide.

FR Enrouleurs automatiques particulièrement adaptés pour opérations de lavage à l'eau et détergents à différentes pressions et températures. Versions avec tuyau de qualité alimentaire indiquées aussi pour le passage d'eau potable. Deux positions possibles du support guide tuyau pour permettre

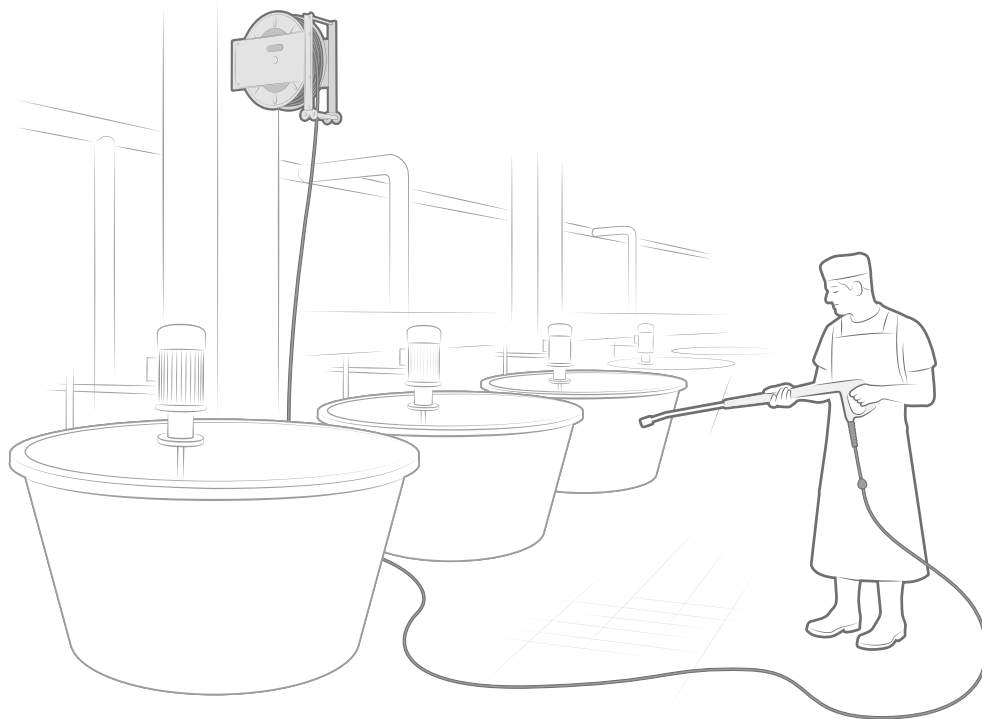
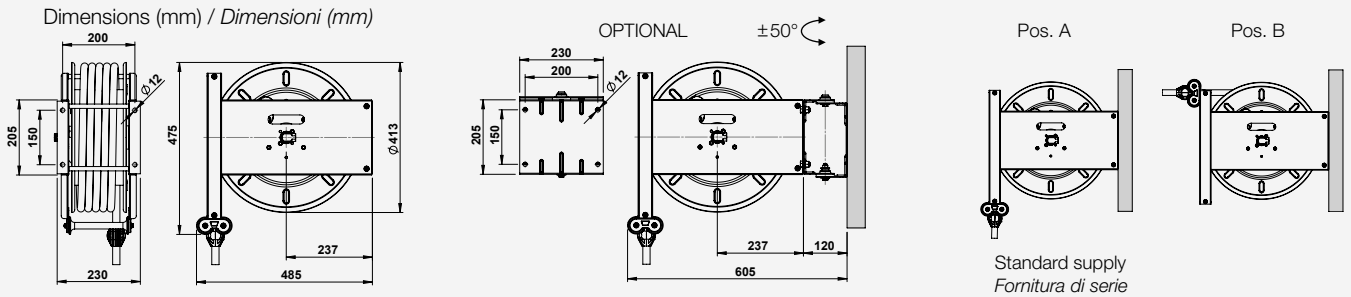
l'installation désirée (pos. A-B). En option: tuyau de connexion, support pivotant, guide tuyau 4 rouleaux.

DE Schlauchaufroller für Waschvorgänge mit Wasser und Reinigungsmittel für versch. Betriebstemperaturen und -drücke, sowie bei lebensmittelechtem Schlauch auch zum Transport von Trinkwasser. Schlauchführungshalterung für 2 verschied. Positionen (s.Abb. A-B). Optional: Schlauchführung mit 4 Rollen, Verbindungsschlauch, Schwenkkonsole.

ES Enrolladores automáticos ideados especialmente para el lavado con agua y detergentes con diferentes presiones y temperaturas. Versiones con mangueras

de calidad alimentaria idóneos también para el paso de agua potable. Soporte guía manguera aplicable en dos diversas posiciones para permitir la instalación deseada (pos. A-B). Opcional: manguera de conexión, soporte giratorio, guía manguera de 4 rodillos.


IT Avvolgitubo automatici particolarmente adatti per operazioni di lavaggio con acqua e detersivi a diverse pressioni e temperature. Versioni con tubo di qualità alimentare idonee anche per passaggio di acqua potabile. Supporto guidatubo applicabile in due diverse posizioni per consentire l'installazione desiderata (pos. A-B). Optional: tubo di collegamento, supporto girevole, guidatubo a 4 rulli.



Hose reels model ALX without hose / Avvolgitubo modello ALX senza tubo

Fluid Fluido	Max. pressure Pressione max.	Code Codice	Inlet (Bsp) Entrata (Gas)	Outlet (Bsp) Uscita (Gas)	Capacity Capacità	Weight (kg) Peso (kg)	ATEX (optional)
Water/Acqua 100°C	60 Bar/840 PSI	ALX601220ST	1/2" M	1/2" M	(1/2") 20 m/65 ft (5/8") 15 m/50 ft	20	•
Water/Acqua 150°C	400 Bar/5600 PSI	ALX4H3820ST	3/8" F	3/8" M	20 m/65 ft	20	•

Hose reels model ALX with hose / Avvolgitubo modello ALX completi di tubo

Fluid Fluido	Pressure - Hose Pressione - Tubo	Code Codice	Inlet (Bsp) Entrata (Gas)	Outlet (Bsp) Uscita (Gas)	Hose diam. Tubo diam.	Hose length Lungh. Tubo	Weight (kg) Peso (kg)	Inlet hose Tubo entrata	ATEX (optional)
Water Acqua 70°C	10 Bar/140 PSI (70°C) 20 Bar/280 PSI (25°C) Blue Thermoplastic 	ALX101320K	1/2" M	1/2" M	13 x 20	20 m/65 ft	25	TC13005K	
		ALX101615K	1/2" M	1/2" M	16 x 23	15 m/50 ft	25	TC16005K	
Water Acqua 90°C	10 Bar/140 PSI Blue Rubber/Gomma	ALX101320KR	1/2" M	1/2" M	13 x 21	20 m/65 ft	25	TC1301KR	
		ALX101615KR	1/2" M	1/2" M	16 x 25	15 m/50 ft	25	TC1601KR	
Water Acqua 150°C	250 Bar/3500 PSI 1SC Hydro blue	ALX2H3820	3/8" F	3/8" M	3/8"	20 m/65 ft	27	TC38005H	
		ALX4H3820	3/8" F	3/8" M	3/8"	20 m/65 ft	28	TC38005H	•
		ALX4H5120	3/8" F	3/8" M	5/16"	20 m/65 ft	27	TC38005H	
		*ALX4H3820X	3/8" F	3/8" F	3/8"	20 m/65 ft	28	not available	

* Hose with stainless steel fittings / Tubo con raccordi in acciaio inox