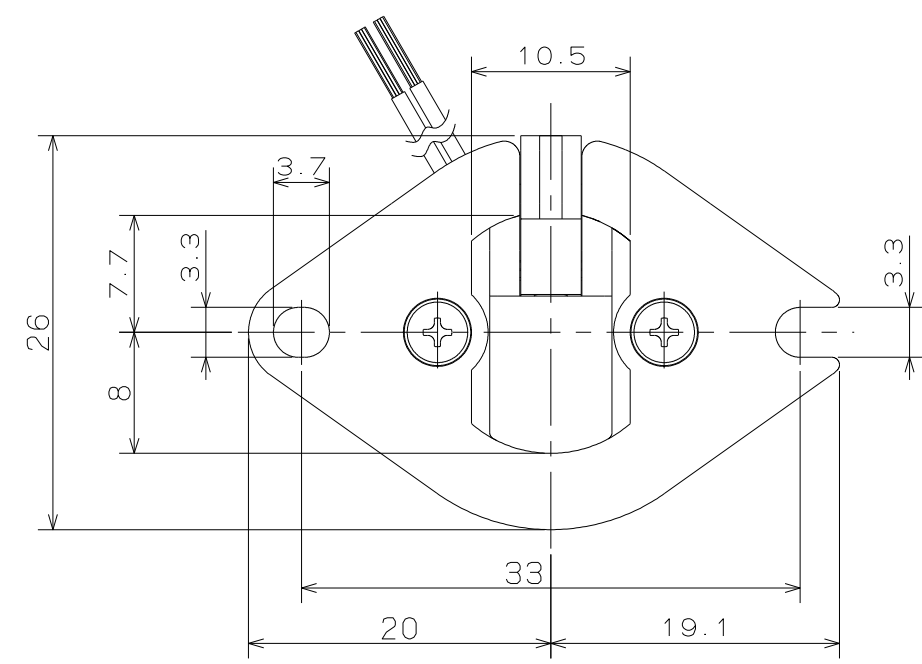


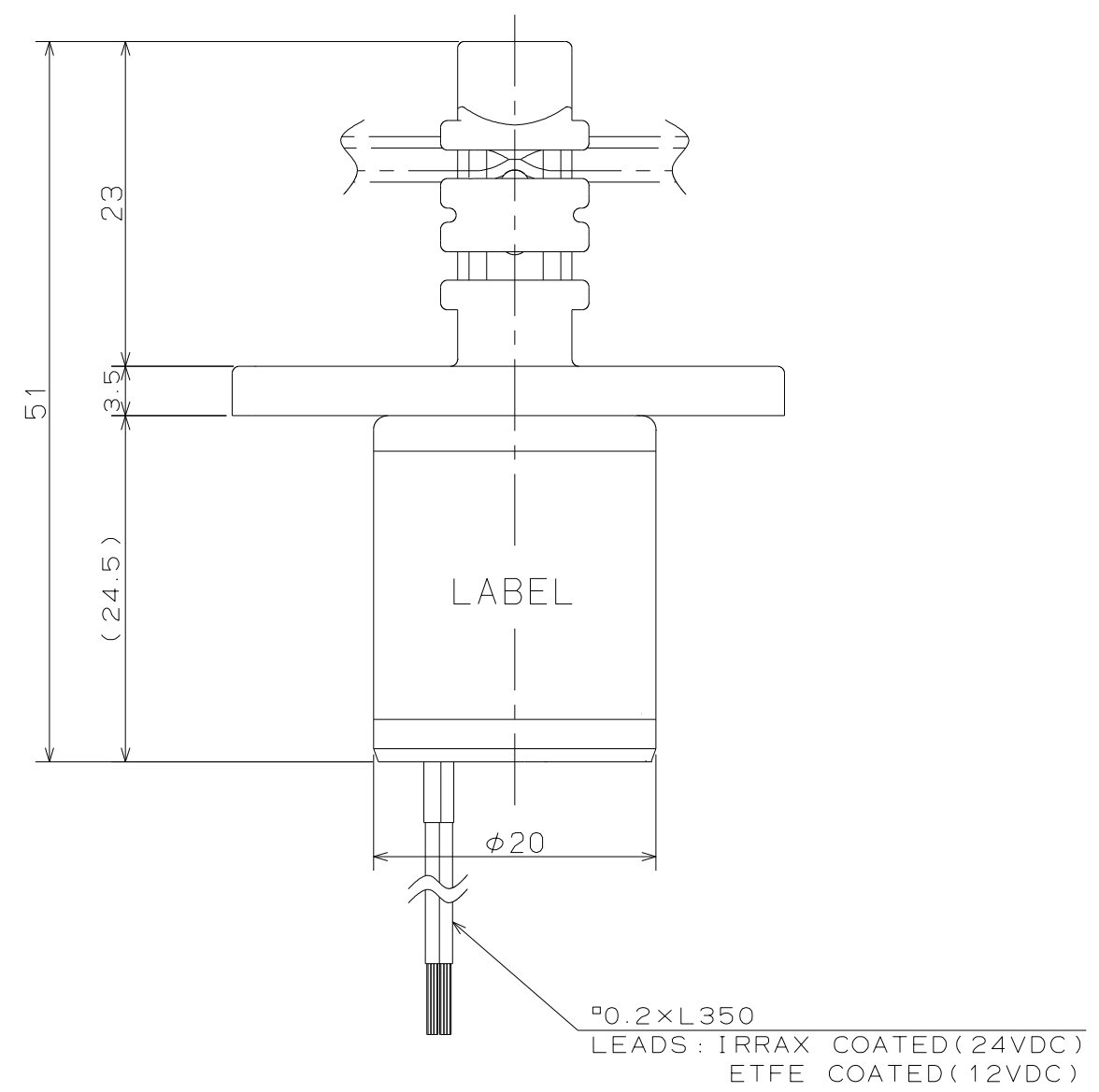
FOR REFERENCE
ONLY



PINCH VALVE

SPECIFICATIONS for MODEL PSK-1615NC

- TYPE : NORMALLY CLOSE
- TUBE DIAMETER : I.D. 1.6mm, O.D. 3.2mm
- TUBE MATERIAL : SILICONE
- OPERATING PRESSURE RANGE : 0 ~ 150kPa
{ 0 ~ 1.5bar }
- AMBIENT TEMPERATURE RANGE : 0 ~ 40°C
- RATED VOLTAGE : 12VDC, 24VDC
- POWER CONSUMPTION : 3W
- DUTY CYCLE : CONTINUOUS
- DIELECTRIC STRENGTH : 1500VAC FOR 60s



PART NAME	MATERIAL	REQD.	NOTE
PINCHING HEAD	PBT	1	
TUBE HOLDER	POM	1	

PINCH VALVE
PSK-1615NC