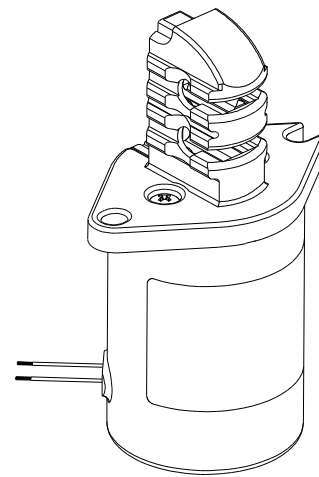
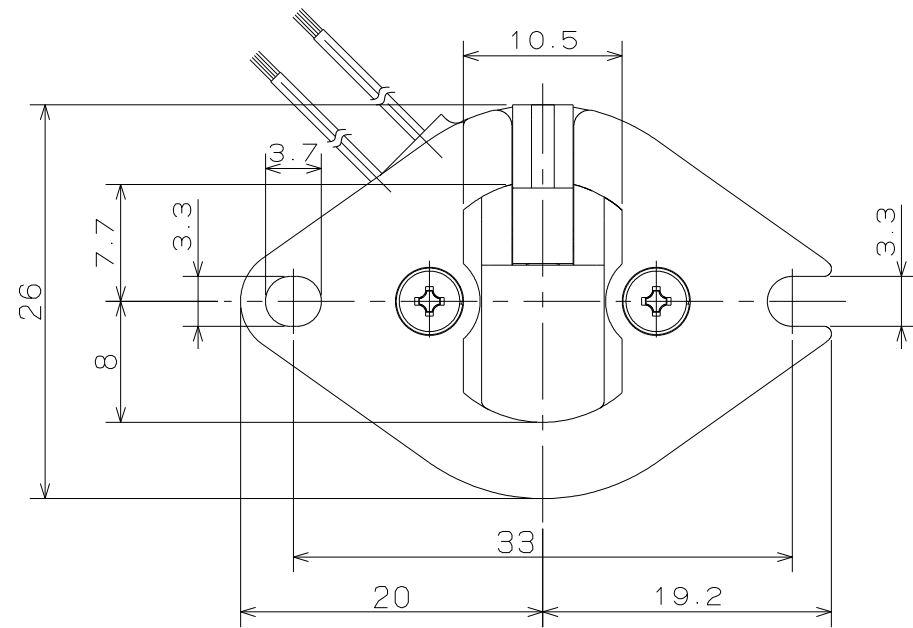


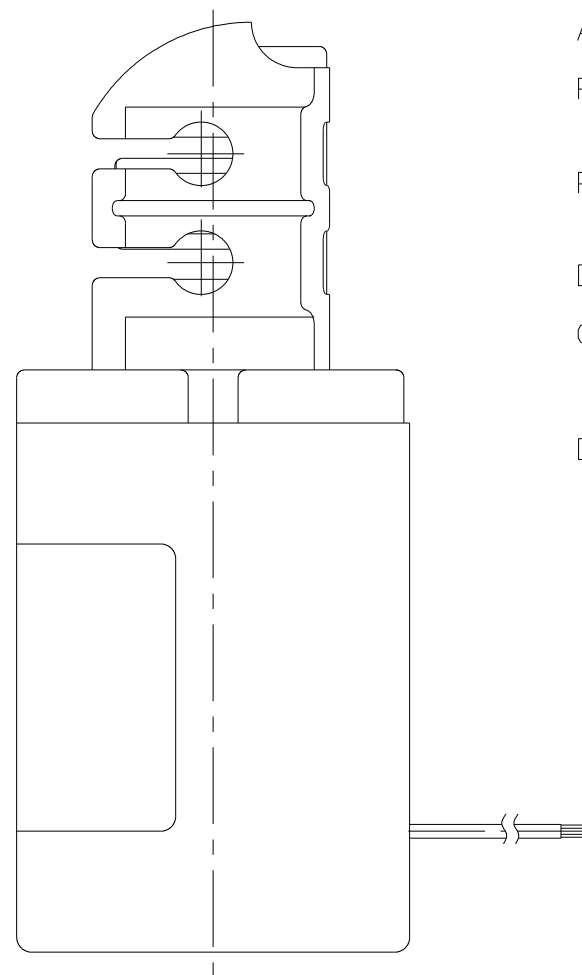
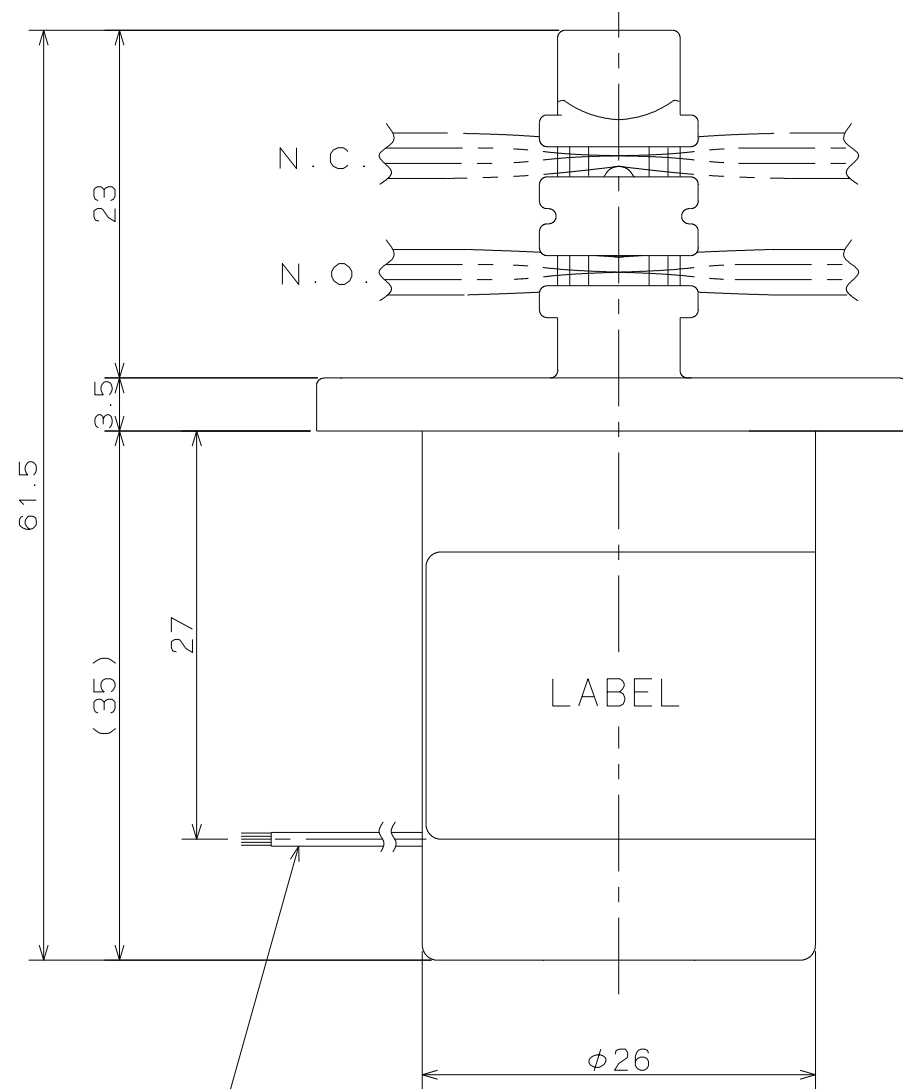
FOR REFERENCE ONLY



# PINCH VALVE

## SPECIFICATIONS for MODEL MODEL PMK-1015W

- TUBE SIZE : I.D. 1mm O.D. 3mm
- TUBE MATERIAL : SILICONE, PharMed
- OPERATING PRESSURE RANGE : 0 ~ 150kPa  
{ 0 ~ 1.5bar }
- AMBIENT TEMPERATURE RANGE : 0 ~ 50° C
- RATED VOLTAGE : 12VDC, 24VDC, DC90V  
100VAC (SILICONE RECTIFIER ATTACHED)
- POWER CONSUMPTION : 4.4W  
5W(DC90V, 100VAC)
- DUTY CYCLE : CONTINUOUS
- COIL TEMPERATURE INCREASE : MAX. 75° C FROM ROOM TEMPERATURE
- INSULATION CLASS : CLASS B
- DIELECTRIC STRENGTH : 1500VAC FOR 60s



LEADS(ETFE COATED)  
φ0.2×L350

PART NAME	MATERIAL	REQD.	NOTE
PINCH VALVE			
PMK-1015W			