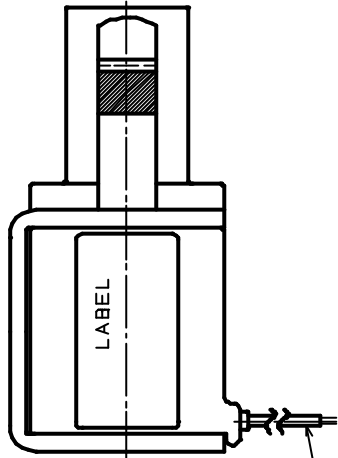
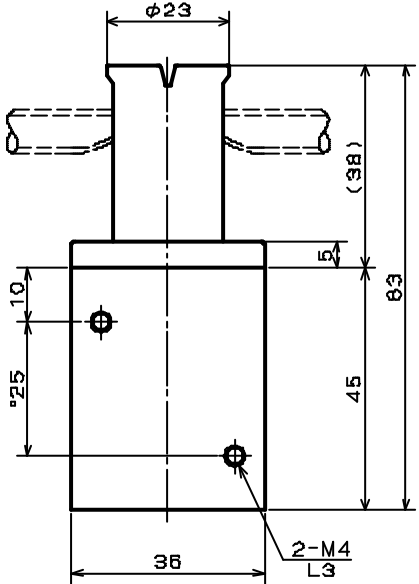
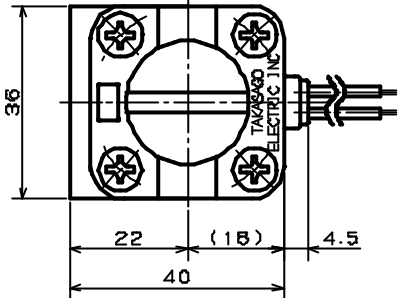


FOR REFERENCE ONLY

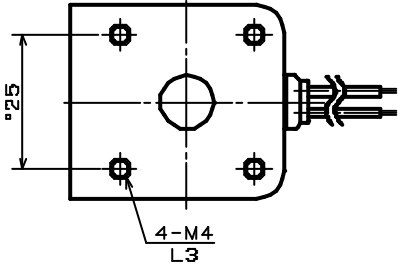
PINCH VALVE

SPECIFICATIONS FOR MODEL PK-0802-NC

- TUBE DIAMETER : I.D. 6mm O.D. 8mm
- TUBE MATERIAL : SILICONE
- OPERATING PRESSURE RANGE : 0 ~ 20kPa
- AMBIENT TEMPERATURE RANGE : 0 ~ 40°C
- RATED VOLTAGE : 12VDC, 24VDC, 90VDC, 100VAC, 200VAC(50/60HZ) SILICON RECTIFIER ATTACHED
- POWER CONSUMPTION : 10W
- DUTY CYCLE : CONTINUOUS
- COIL TEMPERATURE INCREASE : MAX. 90°C FROM ROOM TEMPERATURE
- INSULATION CLASS : CLASS B
- DIELECTRIC STRENGTH : 1500VAC FOR 60s



LEAD WIRES (RAD WIRE V)
AWG22 UL1430 L300



PART NAME	MATERIAL	REQD.	NOTE
PINCH VALVE			
PK-0802-NC			