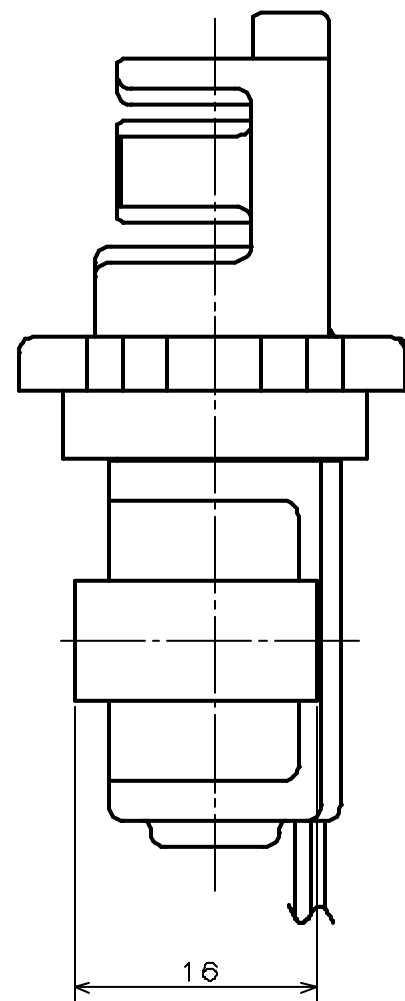
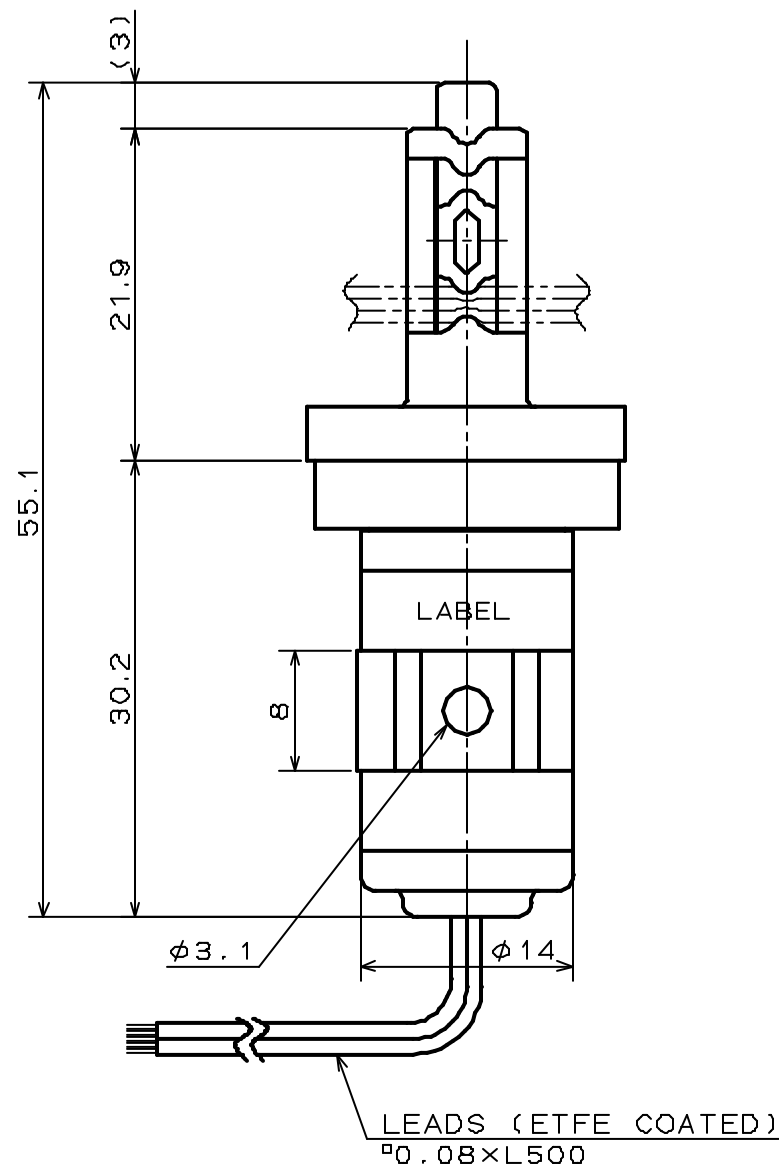
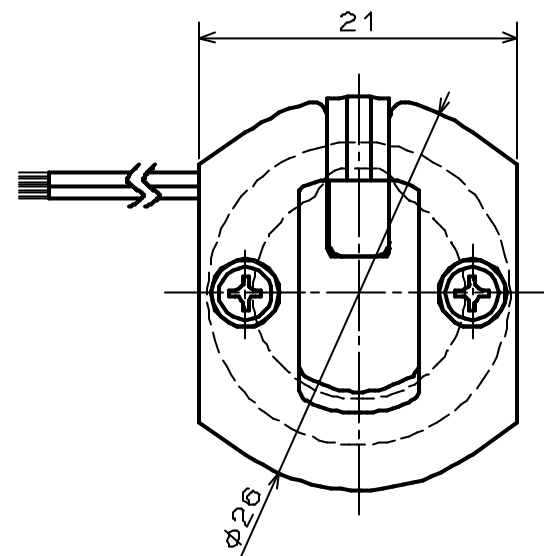


FOR REFERENCE ONLY

PINCH VALVE

SPECIFICATIONS for MODEL PE-0810NO

- TYPE : NORMALLY OPEN
- TUBE DIAMETER : I.D. 0.8mm, O.D. 2.4mm
- TUBE MATERIAL : SILICONE
- OPERATING PRESSURE RANGE : 0 ~ 100kPa
{0 ~ 1bar}
- AMBIENT TEMPERATURE RANGE : 0 ~ 40°C
- RATED VOLTAGE : 12VDC, 24VDC
- POWER CONSUMPTION : 2.8W
- DUTY CYCLE : CONTINUOUS
- COIL TEMPERATURE INCREASE : MAX.110°C FROM ROOM TEMPERATURE
- INSULATION CLASS : CLASS F
- DIELECTRIC STRENGTH : 1500VAC FOR 60s



PART NAME	MATERIAL	REQD.	NOTE
PINCH VALVE			
PE-0810NO			