

## ARTICULO: 2461

### Filtro " Y " extremos bridados.

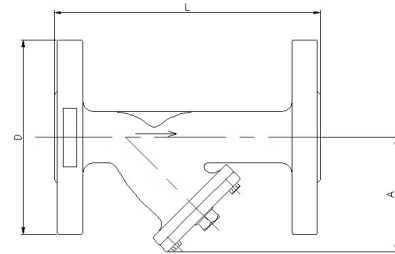
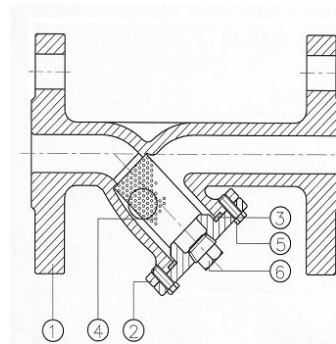
### Flanged ends " Y " Strainer .

#### Características

1. Filtro "Y".
2. Extremos bridados según DIN 2501 PN 16.
3. Longitud entre caras según DIN 3202 F1.
4. Construcción en Acero Inox CF8M.
5. Presión de trabajo máxima 16 Kg / cm<sup>2</sup>.
6. Temperatura de trabajo -30 °C + 240 °C.

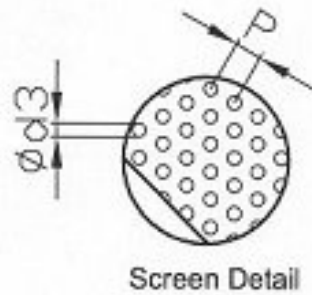
#### Features

1. " Y " Strainer.
2. Flanged ends according to DIN 2501 PN 16.
3. Face to Face according to DIN 3202 F1.
4. Made of Stainless Steel CF8M.
5. Max. Working pressure 16 Kg / cm<sup>2</sup>.
6. Working temperature -30 °C + 240 °C.



| Nº | Denominación/Name | Material                                  | Acabado Superficial/Surface Treatment   |
|----|-------------------|---|---|
| 1  | Cuerpo / Body     | Acero Inox CF8M /<br>Stainless Steel CF8M | Granallado / Shot Blasting + Pickling   |
| 2  | Tapa / Cover      | Acero Inox CF8M /<br>Stainless Steel CF8M | Granallado / Shot Blasting + Pickling   |
| 3  | Junta / Gasket    | PTFE                                      | -----   |
| 4  | Filtro / Strainer | Acero Inox CF8M /<br>Stainless Steel CF8M | -----   |
| 5  | Tornillo / Bolt   | Acero Inox 304 /<br>Stainless Steel 304   | -----   |
| 6  | Tapón / Plug      | Acero Inox 316 /<br>Stainless Steel 316   | Tapón G <sup>1</sup> / <sub>2</sub> " excepto en medidas <sup>1</sup> / <sub>2</sub> "~1"<br>G <sup>1</sup> / <sub>2</sub> " Plug except for sizes <sup>1</sup> / <sub>2</sub> "~1" |

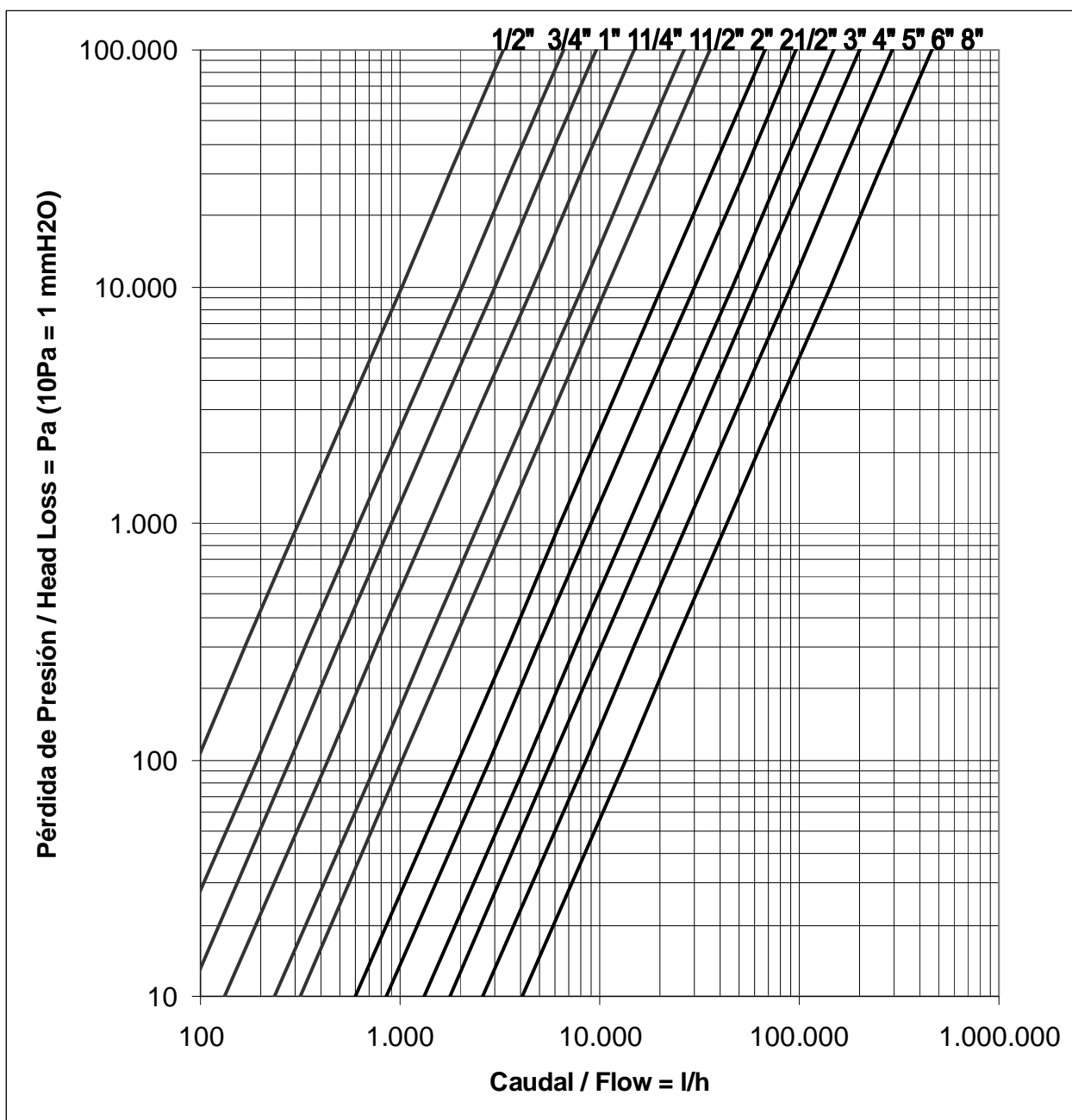
## Detalle de la Malla / Mesh detail:



## DIMENSIONES GENERALES / GENERAL DIMENSIONS

| Ref     | Medida/Size | PN | Dimensiones/Dimensions (mm) |     |     |     |     | Peso/Weight (Kg) |
|---------|-------------|----|-----------------------------|-----|-----|-----|-----|------------------|
|         |             |    | A                           | D   | L   | P   | d 3 |                  |
| 2461 04 | 1/2"        | 16 | 75                          | 95  | 130 | 2   | 1   | 1.95             |
| 2461 05 | 3/4"        | 16 | 90                          | 105 | 150 | 2   | 1   | 2.75             |
| 2461 06 | 1"          | 16 | 100                         | 115 | 160 | 2   | 1   | 3.70             |
| 2461 07 | 1 1/4"      | 16 | 115                         | 140 | 180 | 2   | 1   | 5.90             |
| 2461 08 | 1 1/2"      | 16 | 130                         | 150 | 200 | 2   | 1   | 6.40             |
| 2461 09 | 2"          | 16 | 150                         | 165 | 230 | 2   | 1   | 8.90             |
| 2461 10 | 2 1/2"      | 16 | 190                         | 185 | 290 | 3.5 | 2   | 12.95            |
| 2461 11 | 3"          | 16 | 200                         | 200 | 310 | 3.5 | 2   | 18.15            |
| 2461 12 | 4"          | 16 | 230                         | 220 | 350 | 3.5 | 2   | 24.30            |
| 2461 13 | 5"          | 16 | 280                         | 250 | 400 | 3.5 | 2   | 38.35            |
| 2461 14 | 6"          | 16 | 300                         | 285 | 480 | 3.5 | 2   | 61.30            |
| 2461 16 | 8"          | 16 | 400                         | 340 | 605 | 3.5 | 2   | 115.00           |

**DIAGRAMA DE PERDIDAS DE CARGA / HEAD LOSSES DIAGRAM**



| D  | Inch              | 1/2" | 3/4" | 1"   | 1 1/4" | 1 1/2" | 2"    | 2 1/2" | 3"    | 4"     | 5"     | 6"     | 8"     |
|----|-------------------|------|------|------|--------|--------|-------|--------|-------|--------|--------|--------|--------|
| Kv | m <sup>3</sup> /h | 3,30 | 6,60 | 9,70 | 14,90  | 26,60  | 35,40 | 67,20  | 96,10 | 149,00 | 198,50 | 294,60 | 462,50 |