

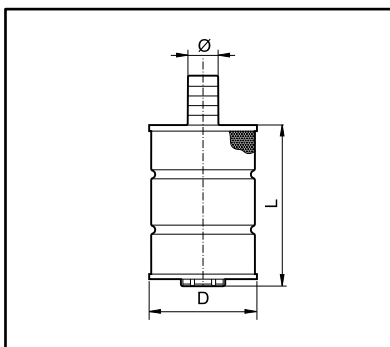


**FILTRI DI ASPIRAZIONE  
SUCTION FILTERS  
FILTROS DE ASPIRACION**

**Filtro in acciaio**



**Steel filter**



**Filtro de acero**

COD. CODE CÓD.	Ø (mm)	D (mm)	L (mm)
<b>306 017</b>	17	100	70
<b>306 023</b>	23	100	70
<b>306 125</b>	25-30	100	150
<b>306 240</b>	35-40	120	170
<b>306 250</b>	50	120	170

**Filtro a "T" con attacco filettato  
(rete 16 mesh)**

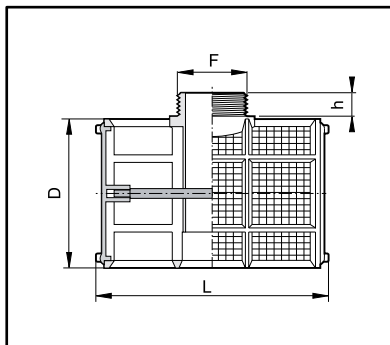
Filtro ispezionabile internamente, può essere raccordato con le valvole di fondo e con i portagomma.

**"T" Filter with threaded connection  
(screen 16 mesh)**

This filter is an inspectionable element and can be connected to foot valves and hose fittings.

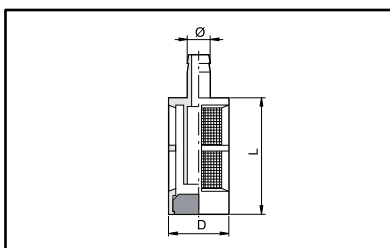
**Filtro en "T" con enlace de rosca  
(malla de 16 mesh)**


Son desmontables y pueden ser ensamblados con las válvulas de fondo y con portamangueras.



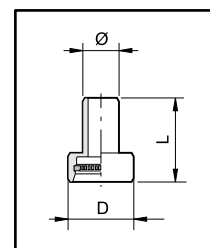
COD. CODE CÓD.	F (BSP)	h (mm)	D (mm)	L (mm)
<b>304 151</b>	G 1 1/4	16	88	120
<b>304 251</b>	G 1 1/4	16	110	130
<b>304 361</b>	G 1 1/2	20	110	200
<b>304 371</b>	G 2	16	110	200

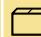
**Filtro di aspirazione per detergente (con contrappeso)  
Suction filter for detergent (with counterweight)  
Filtro de aspiración para detergente (con contrapeso)**



COD. CODE CÓD.	Ø (mm)	D (mm)	L (mm)	
<b>305 008</b>	8	21	41	50
<b>305 010</b>	10	21	41	50

**Filtro di aspirazione per detergente  
Suction filter for detergent  
Filtro de aspiración para detergente**

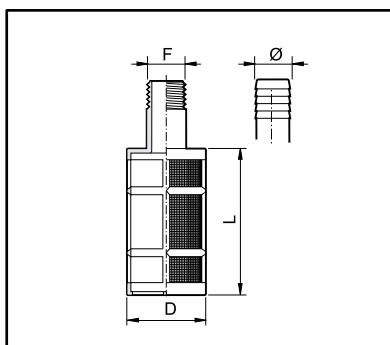


COD. CODE CÓD.	Ø (mm)	D (mm)	L (mm)	
<b>302 008</b>	8	15	20	100

**Filtro di fondo (rete 32 mesh)**



**Foot strainer (screen 32 mesh)**



**Filtro de fondo (malla de 32 mesh)**

COD. CODE CÓD.	F/Ø	D (mm)	L (mm)
<b>305 110</b>	19 mm	42	65
<b>305 120</b>	25 mm	42	65
<b>305 231</b>	G 3/4 (M)	70	130
<b>305 341</b>	G 1 (M)	70	130