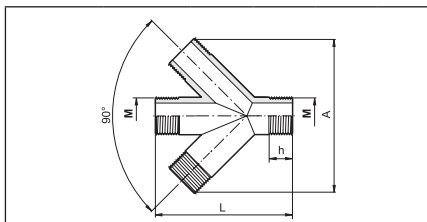


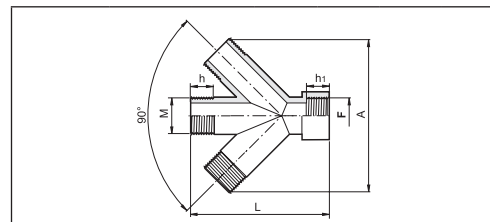


Raccordo a quattro vie a 45° maschio
45°, four-way male fitting
Racor de cuatro vías a 45° macho



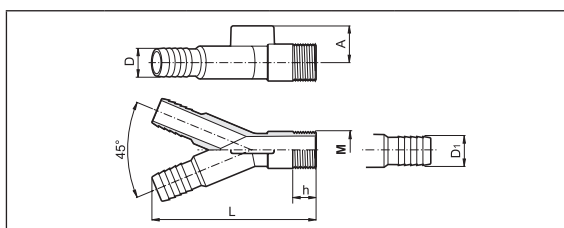
COD. CODE CÒD.	M (BSP)	h (mm)	L (mm)	A (mm)	
160 020	G 1/2	15	80	89	25

Raccordo a quattro vie a 45° maschio/femmina
45°, four-way male/female fitting
Racor de cuatro vías a 45° macho/hembra



COD. CODE CÒD.	M (BSP)	h (mm)	h1 (mm)	L (mm)	A (mm)	
160 120	G 1/2	15	13	81	89	25

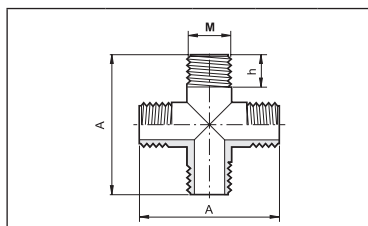
Raccordo a "Y"
"Y" fitting
Racor en "Y"



COD. CODE CÒD.	D (mm)	M (BSP)	h (mm)	D1 (mm)	L (mm)	A (mm)	
140 001	25	G 1	21	---	148	33	10
140 002	25	---	---	25	148	33	10
140 003	25	---	---	30	148	33	10

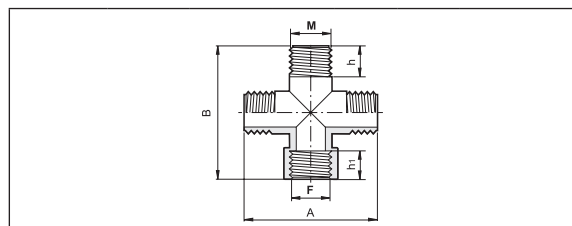


Raccordo a quattro vie a 90° maschio
90°, four-way male fitting
Racor de cuatro vías a 90° macho



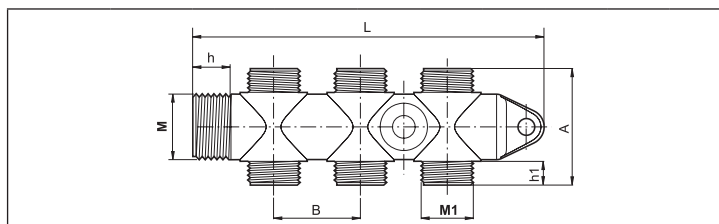
COD. CODE CÒD.	M (BSP)	h (mm)	A (mm)	
150 020	G 1/2	16	69	25

Raccordo a quattro vie a 90° maschio/femmina
90°, four-way male/female fitting
Racor de cuatro vías a 90° macho/hembra



COD. CODE CÒD.	M (BSP)	F (BSP)	h (mm)	h1 (mm)	A (mm)	B (mm)	
150 120	G 1/2	G 1/2	16	15.5	69	69.5	25

Collettore filettato 3-6 vie
3-6 way threaded manifold
Colector roscado de 3-6 vías



COD. CODE CÒD.	vie ways vías	M (BSP)	M1 (BSP)	h (mm)	h1 (mm)	A (mm)	B (mm)	L (mm)	
152 343	3	G 1	G 3/4	19	11.5	46.5	44	178	10
152 643	6	G 1	G 3/4	19	11.5	58	44	178	10