

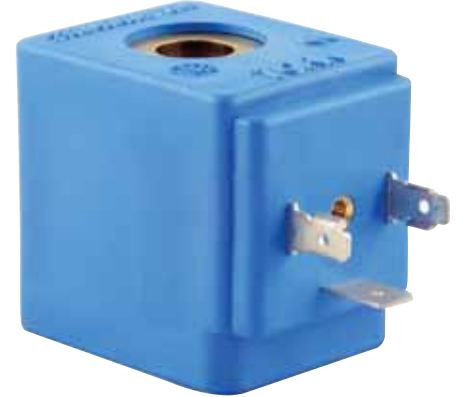
**GENERAL FEATURES**

- New design
- Better performance
- Long life

**COIL CHARACTERISTICS**

Continuous Duty : ED %100  
 Coil insulation class : H (180°C)  
 Coil Impregnation : Polyester Fiber Glass  
 Coil Encapsulation Material : Fiber Glass Reinforced  
 Ambient Temperature : -10°C, +60°C  
 Protection degree : IP 65 (ISO 60529) with coil duly fitted with the plug connector  
 Electric plug connection : DIN 46340 3-poles connectors (DIN 43650)  
 Connector specification : ISO 4400 / EN 175301-803, Form A, Spade Plug (Cable Ø -8 mm)  
 Electrical safety : IEC 335  
 Standard Voltages : For AC 12V , 24V , 48V , 110V , 230V  
 DC 12V , 24V , 48V , 110 V

Other voltages on request  
 Frequency : 50 / 60 Hz  
 Voltage Tolerances : + / - 10%  
 Other request : connector with LED  
 Specify coil voltage with order

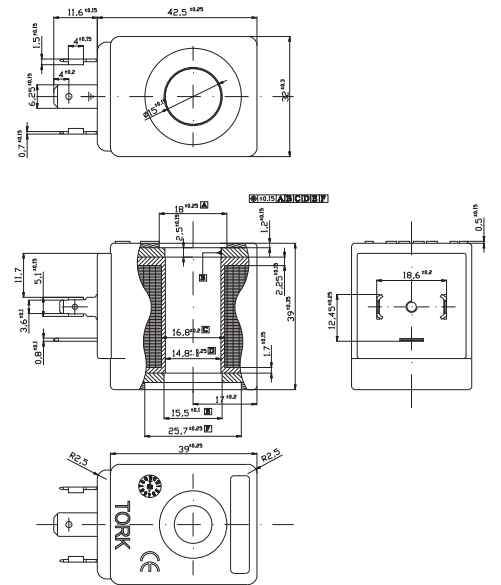


**MATERIALS ON CONTACT WITH FLUID**

Body : Iron cast  
 Internal Parts : Stainless steel and Brass  
 Sealing : NBR  
 Shading Ring : Copper  
 Core, Tube, Spring : Stainless Steel

**TECHNICAL FEATURES**

Max Viscosity : 5°E (~37cST or mm2/s)  
 Response Time : Opening Time: 400 ms to ~ 1600 ms  
 Closing Time: 1000 ms to ~ 2000 ms



POWER RATINGS			
Alternating Current (AC)			
Coil Type	Voltage (V)	Power (VA)	Current (A)
C40012VAC15VA	12	15	1,25
C40024VAC15VA	24	15	0,521
C40048VAC15VA	48	15	0,312
C40110VAC15VA	110	15	0,12
C40230VAC15VA	230	15	0,06
C40230VAC24VA	230	24	0,096

POWER RATINGS			
Direct Current (DC)			
Coil Type	Voltage (V)	Power (W)	Current (A)
C40012VDC18W	12	18	1,5
C40024VDC18W	24	18	0,8
C40048VDC18W	48	18	0,37
C40110VDC18W	110	18	0,163