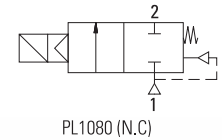


GENERAL FEATURES

- **TORK series PL1080 flanged and compression fittings pulse valves are 2/2 way normally closed**
- **Suitable for air.**
- **G 2" connection**
- **The pulse valves are especially designed for dust collector service application or similar systems**
- **High operating pressure more than PL1070.07 types, double sealings, compact design, high reliability, flow rate, quality and performance; long life.**
- **Extremely fast opening and closing**
- Working Temperature: -20°C...80°C
- **Minimum operating differential pressure 0,5 bar**
- **On request; with electronic timer**
- Some application; dust filters, bunkers, dust extractors, electrostatic painting cabinets
- Coils interchangeable
- Flow factor Kv of each valve is indicated, so that the flow Q can be calculated as a function of pressure
- Pulse valves must be used with filtered fluids.
- Pulse valve can be mounted in any position without affecting operation; vertical with coil upwards preferred.

Normally Closed



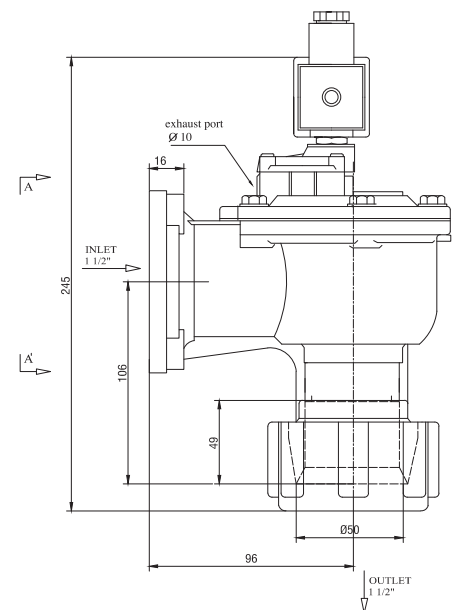
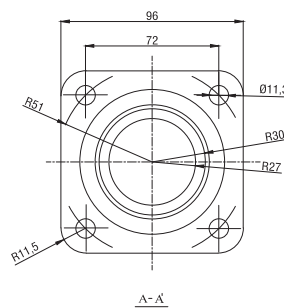
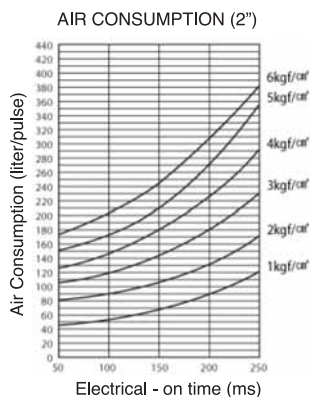
ELECTRICAL CHARACTERISTICS

Continuous Duty	: ED %100
Coil Insulation Class	: H (180°C)
Coil Impregnation	: Polyester Fiber Glass
Coil Encapsulation Material	: Fiber Glass Reinforced
Ambient Temperature	: from -20°C...80°C
Protection Degree	: IP 65 (EN 60529) with coil duly fitted with the plug connector
Electric Plug Connection	: DIN 46340 3-poles connectors (DIN 43650)
Connector Specification	: ISO 4400 / EN 175301-803, Form A, Spade plug (Cable Ø 6-8 mm)
Electrical Safety	: IEC 335
Standard Voltages	: For AC 12V, 24V, 48V, 110V, 230V For DC 12V, 24V, 48V, 110 V

Other voltages On request;
Voltage Tolerances : ±10%
Frequency : 50 / 60 Hz
On request; connector with LED
Specify coil voltage with order

MATERIALS IN CONTACT WITH FLUIDS

Body	: Die Cast Aluminium
Internal Parts	: Stainless Steel and brass
Sealing	: NBR
Shading Ring	: Copper
Seats	: Aluminium
Core Tube	: Stainless Steel
Springs	: Stainless Steel



Valve Type / Order no	Connection Size	Orifice size	Pressure		KV	Fluid Temperature		Seal	Weight
			min	max		min	max		
PL1080	G	mm	bar	bar	lt/min	°C			(kg)
PL1080.07	2" - 11/2"	40	0.5	9.8	984	-20	80	NBR	2.12