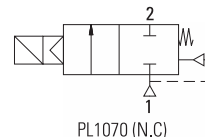


### GENERAL FEATURES

- TORK series PL1070 flanged and compression fittings pulse valves are 2/2 way normally closed.
- Suitable for air
- G 1 1/2" and G 2" connection
- The pulse valves are especially designed for dust collector service application or similar systems
- Compact design, high reliability, flow rate, quality and performance; long life.
- Extremely fast opening and closing
- Working Temperature: -20°C...80°C
- Minimum operating differential pressure 0,5 bar
- On request; with electronic timer
- Some application; dust filters, bunkers, dust extractors, electrostatic painting cabinets
- Coils interchangeable
- Flow factor Kv of each valve is indicated, so that the flow Q can be calculated as a function of pressure
- Pulse valves must be used with filtered fluids.
- Pulse valve can be mounted in any position without affecting operation; vertical with coil upwards preferred.

### Normally Closed



ROHS

### ELECTRICAL CHARACTERISTICS

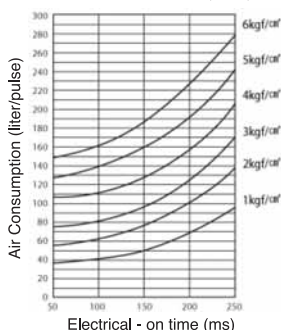
Continuous Duty	: ED %100
Coil Insulation Class	: H (180°C)
Coil Impregnation	: Polyester Fiber Glass
Coil Encapsulation Material	: Fiber Glass Reinforced
Ambient Temperature	: from -20°C...80°C
Protection Degree	: IP 65 (EN 60529) with coil duly fitted with the plug connector
Electric Plug Connection	: DIN 46340 3-poles connectors (DIN 43650)
Connector Specification	: ISO 4400 / EN 175301-803, Form A, Spade plug (Cable Ø 6-8 mm)
Electrical Safety	: IEC 335
Standard Voltages	: For AC 12V, 24V, 48V, 110V, 230V For DC 12V, 24V, 48V, 110 V

Other voltages on request;  
Voltage Tolerances : ±10%  
Frequency : 50 / 60 Hz  
On request; connector with LED  
Specify coil voltage with order

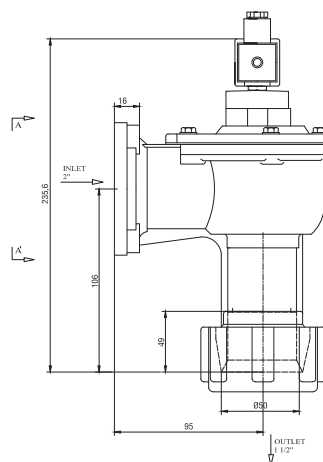
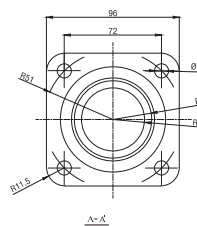
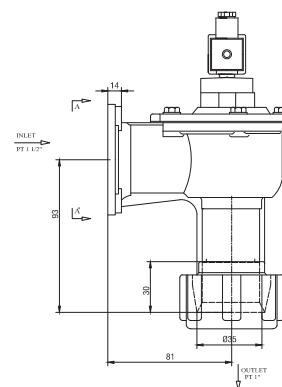
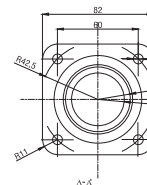
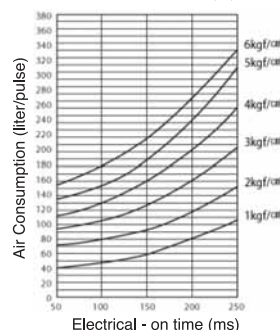
### MATERIALS IN CONTACT WITH FLUIDS

Body	: Die Cast Aluminium
Internal Parts	: Stainless Steel and brass
Sealing	: NBR
Shading Ring	: Copper
Seats	: Aluminium
Core Tube	: Stainless Steel
Springs	: Stainless Steel

AIR CONSUMPTION (1 1/2")



AIR CONSUMPTION (2")



Valve Type / Order no	Connection Size	Orifice size	Pressure		KV	Fluid Temperature		Seal	Weight
			min	max		min	max		
PL1070	G	mm	bar	bar	lt/min	°C			(kg)
PL1070.05	1 1/2" - 1"	25	0.5	9.5	560	-20	80	NBR	1.26
PL1070.07	2" - 1 1/2"	40	0.5	9.5	984	-20	80	NBR	2.06