

### GENERAL FEATURES

- TORK series PL1020 remote control pulse valves are 2/2 way normally closed.
- Suitable for air
- G 3/4" and G 1" connection
- Without coil compact design, high reliability, flow rate, quality and performance; long life.
- The pulse valves are especially designed for dust collector service application or similar systems
- Extremely fast opening and closing
- Working Temperature: -20°C...80°C
- Minimum operating differential pressure 0,5 bar
- On request; with electronic timer
- Ambient Temperature: from -20°C...80°C
- TORK pulse valves satisfy relevant 97/23/EC, Pressure Equipment Directive (PED) and 2006/95/EEC Low Voltage Directive (LVD).
- Some application; dust filters, bunkers, dust extractors, electrostatic painting cabinets
- Coils interchangeable
- Flow factor Kv of each valve is indicated, so that the flow Q can be calculated as a function of pressure
- Pulse valves must be used with filtered fluids.
- Pulse valve can be mounted in any position without affecting operation; vertical with coil upwards preferred. Standard pipe connection is G (BSP) (ISO 228-1) and on request; other pipe connections are available (NPT (ANSI 1.20.3))

**Normally Closed**

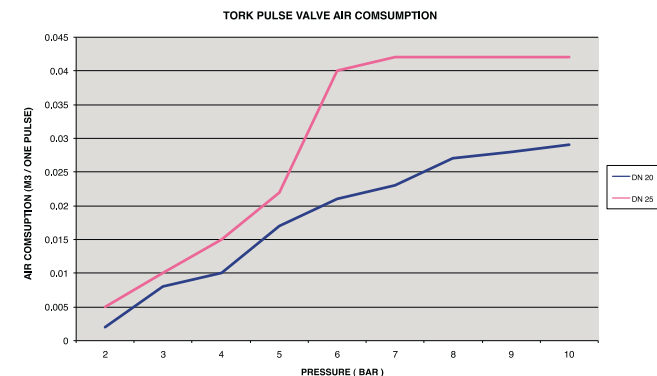
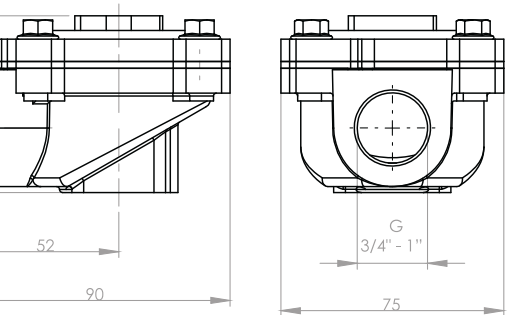


### MATERIALS IN CONTACT WITH FLUIDS

Body : Aluminium      Response Time : Opening Time:100 ms,  
Internal Parts : Stainless Steel      Closing Time :100 ms  
Sealing : Neoprene  
Shading Ring : Copper  
Seats : Aluminium  
Core Tube : Stainless Steel  
Springs : Stainless Steel



Application, TORK Pulse Valves



Valve Type / Order no	Connection Size	Orifice size	Pressure		KV	Fluid Temperature		Seal	Weight
			min	max		min	max		
<b>PL1020</b>	<b>G</b>	<b>mm</b>	<b>bar</b>	<b>bar</b>	<b>lt/min</b>	<b>°C</b>			<b>(kg)</b>
PL 1020 .04	3/4"	25	0.5	8	150	-20	80	NEOPRENE	0.44
PL 1020 .05	1"	25	0.5	8	270	-20	80	NEOPRENE	0.43

### GENERAL FEATURES

- TORK series PL1020 remote control pulse valves are 2/2 way normally closed.
- Suitable for air
- G 1 1/2", G 2", G 2 1/2" and G 3" connection
- Without coil compact design, high reliability, flow rate, quality and performance; long life.
- The pulse valves are especially designed for dust collector service application or similar systems
- Extremely fast opening and closing
- Working Temperature: -20°C...80°C
- Minimum operating differential pressure 0,5 bar
- On request; with electronic timer
- Ambient Temperature: from -20°C...80°C
- Some application; dust filters, bunkers, dust extractors, electrostatic painting cabinets
- Coils interchangeable
- Flow factor Kv of each valve is indicated, so that the flow Q can be calculated as a function of pressure
- Pulse valves must be used with filtered fluids.
- Pulse valve can be mounted in any position without affecting operation; vertical with coil upwards preferred.
- Standard pipe connection is G (BSP) (ISO 228-1) and on request; other pipe connections are available (NPT (ANSI 1.20.3))

**Normally Closed**



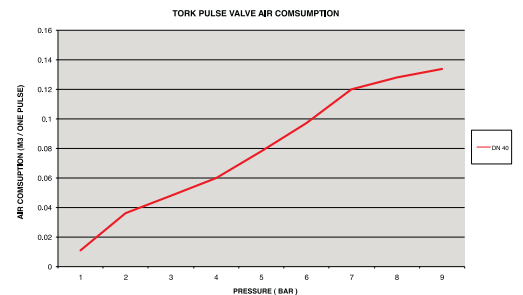
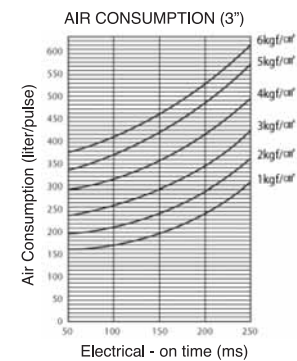
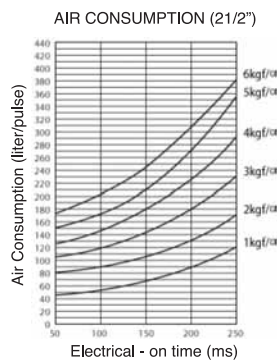
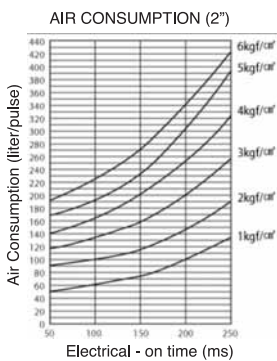
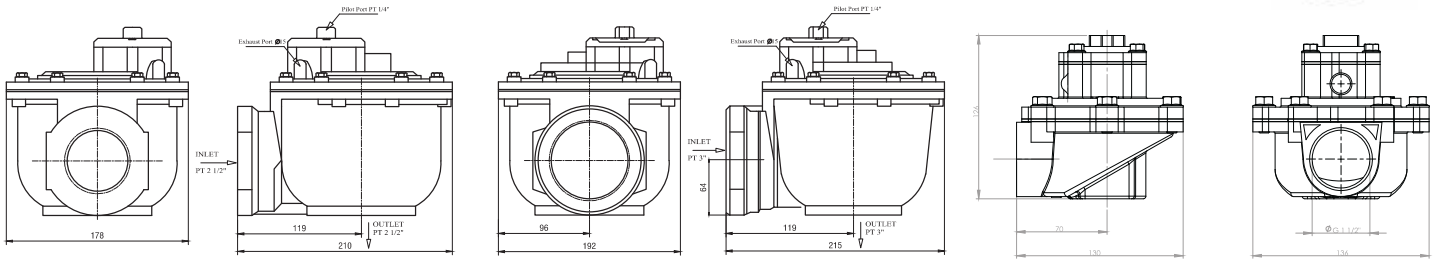
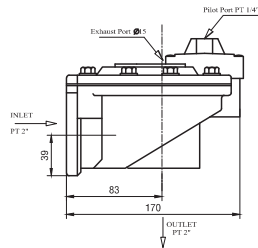
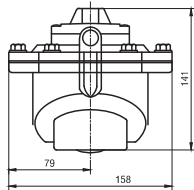
Application, TORK Pulse Valves



ROHS

### MATERIALS IN CONTACT WITH FLUIDS

- Body : Die Cast Aluminium
- Internal Parts : Stainless Steel
- Sealing : NBR and NEOPRENE
- Shading Ring : Copper
- Seats : Aluminium
- Core Tube : Stainless Steel
- Springs : Stainless Steel



Valve Type / Order no	Connection Size	Orifice size	Pressure		KV	Fluid Temperature		Seal	Weight
			min	max		min	max		
PL1020	G	mm	bar	bar	lt/min	°C			(kg)
PL1020.07	1 1/2"	40	0.5	8	774	-20   80	NEOPRENE	1.04	
PL1020.08	2"	50	0.5	8.5	1065	-20   80	NBR	1.9	
PL1020.09	2 1/2"	65	0.5	8.5	1378	-20   80	NBR	3.3	
PL1020.10	3"	80	0.5	8.5	2040	-20   80	NBR	3.5	