

# STEADYPRES 2.0

Range of - water cooled - pump inverters designed to control (and protect) pumping systems based on changing pump speed.

For single pump

For booster sets  
(up to 3 pumps)

M/M, M/T, T/T  
versions

Up to 4 HP

INVERTER TECHNOLOGY



The comfort  
of constant  
Pressure

Simplified  
installation

Energy  
& cost saving

Longevity  
of pump system



**DG  
FLOW**



From water supply for domestic, irrigation,  
commercial applications fits  
any new and existing installation.



# KEY FEATURES

# STEADYPRES 2.0

## NO LEAK

Avoid risk of turn-on water and find leak, thanks to special 3 pcs unions (metallic), resisting to misthreading and equipped with o-ring watertight sealing.

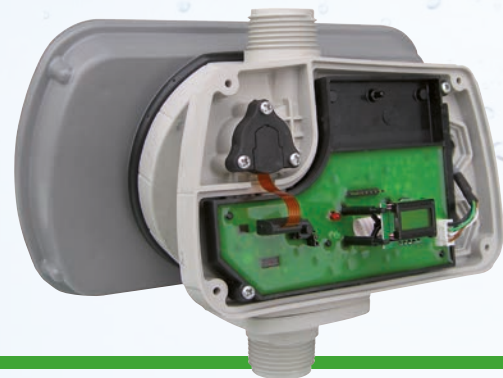


# INVERTER TECHNOLOGY



## ELECTRONIC PRESSURE SENSOR

Featured by robustness of ceramic technology.



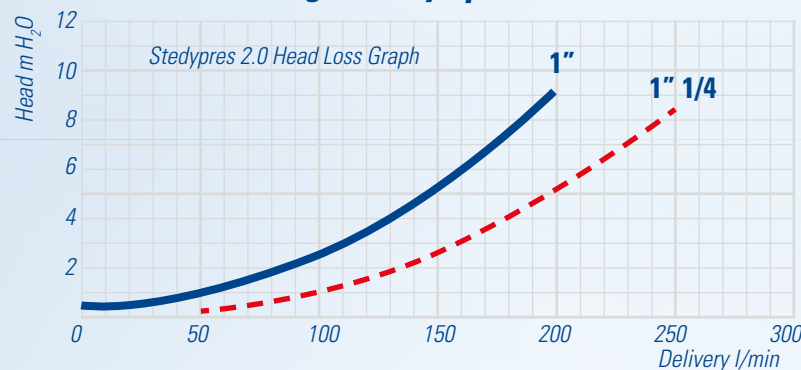
## REAL CHECK VALVE (built-in)

Spring assisted valve, easily removable (4 screws) for service operations



## LOW HEAD LOSS

Thanks to internal geometry optimization.



## REPLACEABLE CAPACITORS

This ensure that in the unusual event of capacitor failure, an economic and practical remedy is available.



## MULTIPLE PUMPS (up to 3 pumps, 1 Steadypres per pump):

In this configuration Steadypres 2.0:

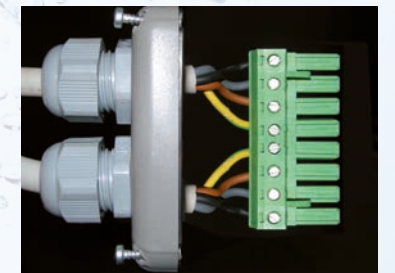
- Controls and protects each connected pump
- Automatically excludes pump in alarm
- Automatically "duty-pump" change-over
- Provide: volt free contacts for remote alarm
- Provide: wiring of low level float switch



Plug-&-play communication module is required (optional)

## ELECTRICAL WIRING

The removable slide makes wiring a safe and simple operation



## INITIAL CONFIGURATION:

The simplified new software make it really easy!!

3 different software levels for different needs:

- basic
- advanced
- inspection



## ON-OFF SWITCH + FUSE

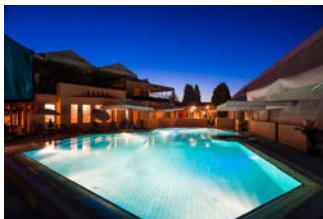
(available on MM, MT versions)

Plug Steadypres 2.0 straight into socket and avoid add new circuit + protection from "main-breaker panel".



( to be verified according to local standards )



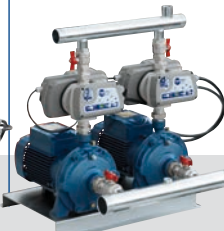


## CONFIGURATION EXAMPLES:

### SINGLE PUMP SET



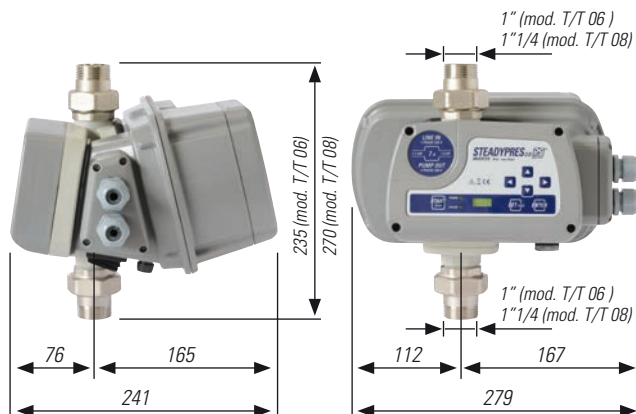
### TWIN PUMP SET: Master + Slave



### THREE PUMP SET Master+Slave+Slave



## DIMENSIONS



## PACKAGING

Dimensions : 26 x 20 x 26(h)



Weight :  
 M/M 8.5 /11 - M/T 7/ 12 kg 2,9  
 M/M 16 - T/T 6 kg 3,7  
 T/T 8 kg 4,1

## TECHNICAL DATA

- IP protection: IP65
- Ambient temp range: 0-40°C
- Fluid temp range: 0-55°C
- Accepted fluids: clean water
- Voltage: +/- 10%
- Frequency: 50-60Hz
- Connections: 1" BSP male (NPT available on request)
- Working pressure: 1 - 9 bars
- Max working pressure: 10 bars
- Burst pressure: 40 bars
- Cut-off flow rate: 2 l/min
- Working position: vertical only

- Steadypres protects from:
- Dry-run w/h automatic reset
  - Anomalous currents & voltages
  - Anomalous temperatures
  - Missing phase (3 phase version only)

Model	Item no.	Max. pump power		Set pressure	Line voltage supply	Pump voltage	Frequency	Nominal max current	Con-nections	Multi pump application	Max. operating pressure	Enclosure
		Kw	Hp									
<b>Single phase input / Single phase output</b>												
M/M 8.5 E	D01141091	1,1	1,5	1 ÷ 9*	1 x 230	1 x 230	25 ÷ 50/60	8,5	1" x 1"	Yes**	10	IP65
M/M 11 E	D01141088	1,5	2,0	1 ÷ 9*	1 x 230	1 x 230	25 ÷ 50/60	11,0	1" x 1"	Yes**	10	IP65
M/M 16 E	D01141089	2,0	3,0	1 ÷ 9*	1 x 230	1 x 230	25 ÷ 50/60	16,0	1" x 1"	Yes**	10	IP65
<b>Single phase input / Three phase output</b>												
M/T 7E	D01141092	1,1	1,5	1 ÷ 9*	1 x 230	3 x 230	25 ÷ 50/60	7,0	1" x 1"	Yes**	10	IP65
M/T 12E	D01141093	2,2	3,0	1 ÷ 9*	1 x 230	3 x 230	25 ÷ 50/60	12,0	1" x 1"	Yes**	10	IP65
<b>Three phase input / Three phase output</b>												
T/T 6 E	D01142316	2,2	3,0	1 ÷ 9*	3 x 400	3 x 400	25 ÷ 50/60	6,0	1" x 1"	Yes**	10	IP65
T/T 8 E	D01142318	3,0	4,0	1 ÷ 9*	3 x 400	3 x 400	25 ÷ 50/60	8,0	1" 1/4	Yes**	10	IP65

\*\* by adding the expansion board D01531K01 (optional). 1 board each Steadypres 2.0 is required info@dgflow.it - www.dgflow.it



**DGFLOW srl**  
 Via Emilia, 5 - 46030 Bigarello (Mantova) Italy  
 tel. +39 0376 340922 - fax. +39 0376 249525  
 info@dgflow.it - www.dgflow.it