

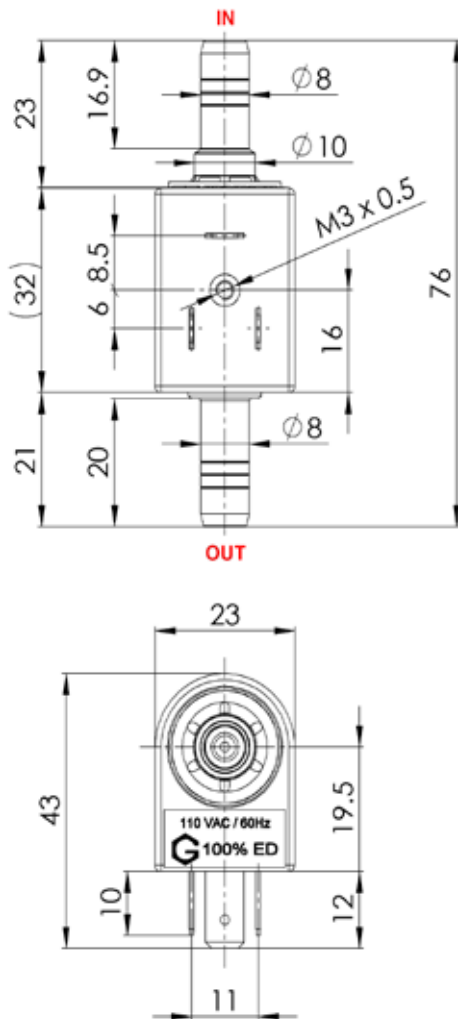
SOLENOID PUMPS

EMX08 BD

TECHNICAL DATA



DIMENSIONS



NOMINAL RATED DATA

Max. pressure	0.8[bar]
Max. flow rate	20[l/h]
Max. suction height	3[m]
Viscosity range	1..600[mm ² /s]
Filter	Mesh 100
Tension	230[V] (12, 24, 110V)
Frequency	50, 60[Hz]
Electrical connection	3 x 2.8 x 0.5 [mm] DIN43650
Power	18[W]
Weight	~95[g]
Temperature	1..50[°C]
Insulation	Class F Class 1
100% ED	100% ED / 20 [°C]
Noise level	Open flow 40[dB(A)] Max.pressure 29[dB(A)]

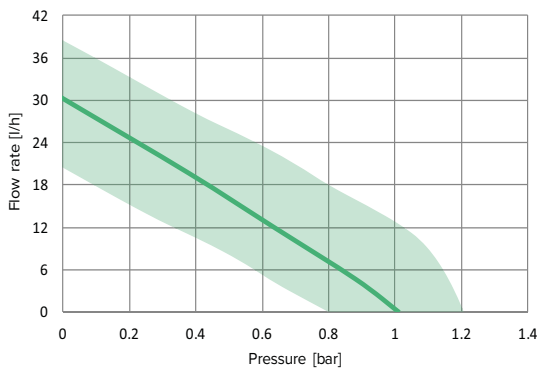
SOLENOID PUMPS

EMX08 BD 230V

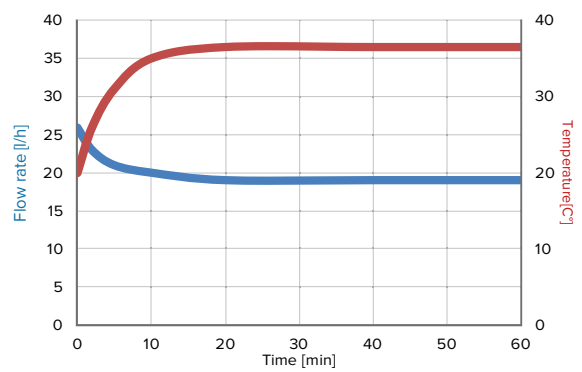
TECHNICAL DATA



PERFORMANCES



OPEN FLOW & TEMPERATURE



Tested with 20°C of water at ambient temperature

ACCESSORIES



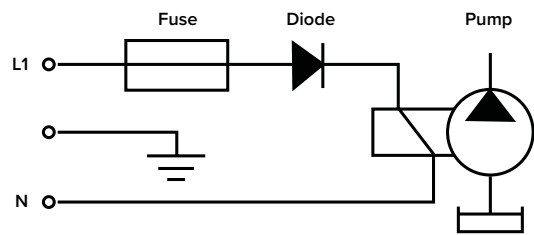
Heating sink



Mounting rubber

Large choice of materials & options

ELECTRIC WIRING DIAGRAM



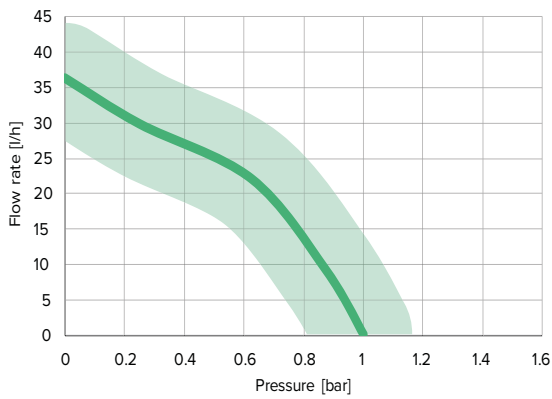
Please refer to instruction manual for more installation details. For more information, visit our website : www.gotec.ch

Certifications

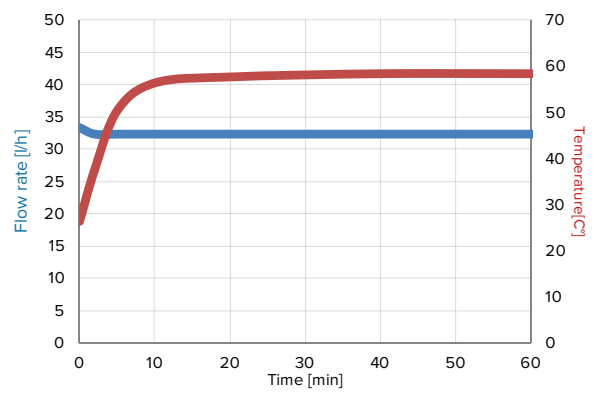




PERFORMANCES



OPEN FLOW & TEMPERATURE



Tested with 20°C of water at ambient temperature

ACCESSORIES



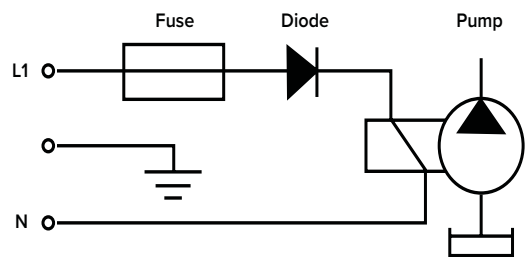
Heating sink



Mounting rubber

Large choice of materials & options

ELECTRIC WIRING DIAGRAM



Please refer to instruction manual for more installation details. For more information, visit our website : www.gotec.ch

Certifications

